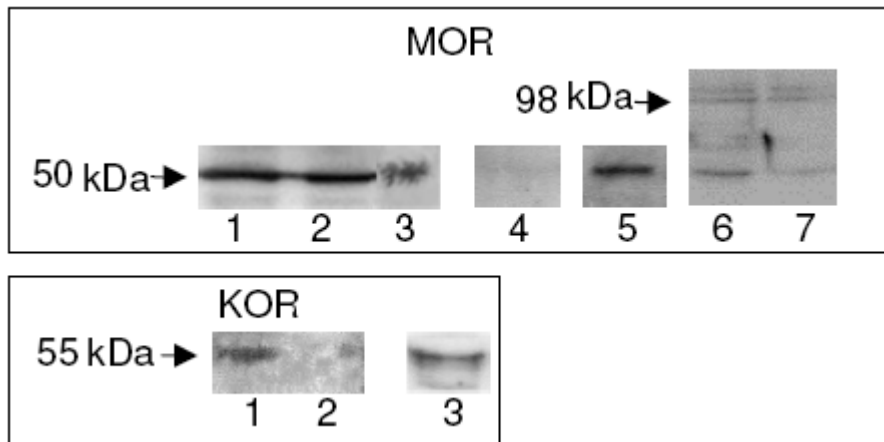


## MOR1-C (Catalog#: RA2001) Western Blot Protocol



D3 ES cells were grown in serum/LIF/ME containing media (undifferentiated cells: D3 ES cells) or they were differentiated with 1  $\mu$ M RA (short-term differentiation: dD3 ES cells).

Cell lysates (20-50  $\mu$ g protein) were run on 10% SDS-PAGE and immunoblotting was carried with MOR-1 (C-terminus, Neuromics, 1:2000), MOR-1 (N-terminus, Santa Cruz, 1:200) or KOR-1 (Santa Cruz, 1:50) Abs.

Shown are representative immunoblots from 4-8 experiments:

### *C-terminus MOR-1 Ab:*

1. D3 ES cells.
2. immortalized rat astrocytes stably transfected with MOR-1.
3. rat brain membrane.
4. late passage immortalized rat astrocytes (negative control).
5. dD3 ES cells.

### *N-terminus MOR-1 Ab:*

6. D3 ES cells.
7. dD3 ES cells.

### KOR Ab:

1. D3 ES cells.
2. late passage immortalized rat astrocytes (negative control);
3. dD3 ES cells.