



Catalog Number:	CH22139	Host:	Chicken
Product Type:	Chicken Polyclonal	Species Reactivity:	Human, Rat, Mouse, Cow, Pig, Horse
Immunogen Sequence:	Full length recombinant human protein expressed in and purified from <i>E. coli</i>	Format:	Affinity purified antibody at 1mg/mL in 50% PBS, 50% glycerol plus 5mM NaN3
Applications:	Immunofluorescence: 1:1,000 Immunohistochemistry: 1:1,000 Western Blot: 1:2,000		
Storage:	Dilutions listed as a recommendation. Optimal dilution should be determined by investigator. Antibody can also be aliquotted and stored frozen at -20° C in a manual defrost freezer for six months without detectable loss of activity. The antibody can be stored at 2° - 8° C for 1 month without detectable loss of activity. Avoid repeated freeze-thaw cycles.		

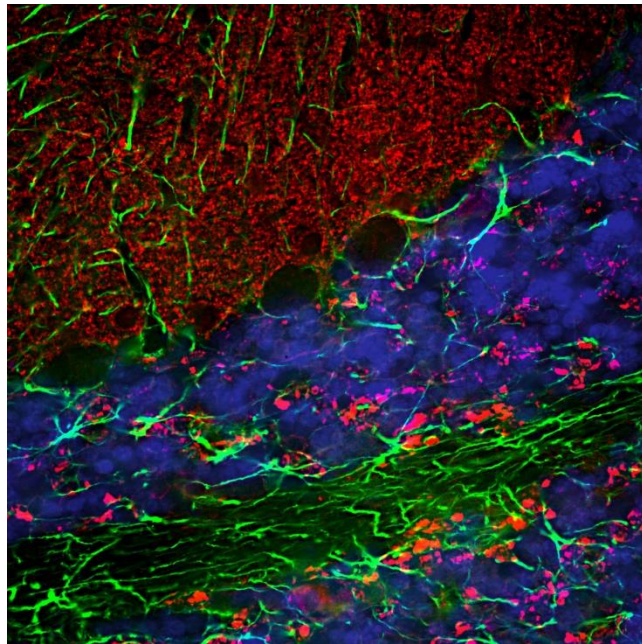
Application Notes

Description/Data

α -synuclein is a member of the synuclein protein family, the other two members being β and γ synuclein, each protein being coded for by a distinct but related gene. α -synuclein was originally isolated as a major synaptic vesicle associated protein from the electric organ of the fish Torpedo, and direct homologues of α -synuclein are found in all vertebrates. Later work connected α -synuclein expression with several human brain pathologies, so that it is a major component of the Lewy bodies of Parkinson's disease. Point mutations of α -synuclein proved to be causative of some forms of familial Parkinson's disease. α -synuclein is also found in the Lewy bodies of patients with diffuse Lewy body disease and inclusions in glial cells in the brains of patients with multiple system atrophy and amyotrophic lateral sclerosis. α -synuclein is normally heavily expressed in brain and appears to be localized primarily to presynaptic regions, though not with a typical synaptic vesicle distribution pattern.

This antibody recognizes full length human and rodent α -synuclein specifically both in western blots and in immunocytochemical experiments and is a good marker of synapses on transgenic mice.

Image: Immunofluorescent analysis of a section of rat cerebellum stained with chicken pAb to α -synuclein, CH22139, dilution 1:3,000 in red, and costained with rabbit pAb to GFAP, dilution 1:5,000 in green. The blue is DAPI staining of nuclear DNA.



FOR RESEARCH USE ONLY

NEUROMICS' REAGENTS ARE FOR IN VITRO AND CERTAIN NON-HUMAN IN VIVO EXPERIMENTAL USE ONLY AND NOT INTENDED FOR USE IN ANY HUMAN CLINICAL INVESTIGATION, DIAGNOSIS, PROGNOSIS, OR TREATMENT. THE ABOVE ANALYSES ARE MERELY TYPICAL GUIDES. THEY ARE NOT TO BE CONSTRUED AS BEING SPECIFICATIONS. ALL OF THE ABOVE INFORMATION IS, TO THE BEST OF OUR KNOWLEDGE, TRUE AND ACCURATE. HOWEVER, SINCE THE CONDITIONS OF USE ARE BEYOND OUR CONTROL, ALL RECOMMENDATIONS OR SUGGESTIONS ARE MADE WITHOUT GUARANTEE, EXPRESS OR IMPLIED, ON OUR PART. WE DISCLAIM ALL LIABILITY IN CONNECTION WITH THE USE OF THE INFORMATION CONTAINED HEREIN OR OTHERWISE, AND ALL SUCH RISKS ARE ASSUMED BY THE USER. WE FURTHER EXPRESSLY DISCLAIM ALL WARRANTIES OF MERCHANTABILITY AND FITNESS FOR A PARTICULAR PURPOSE.-V1-10/2013