

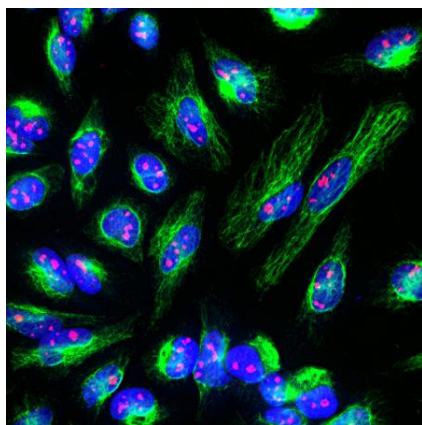


Catalog Number:	RA22147	Host:	Rabbit
Product Type:	Rabbit Polyclonal	Species Reactivity:	Human, Rat, Mouse
Immunogen Sequence:	Full length human fibrillarin expressed in and purified from E.Coli	Format:	Affinity purified antibody at 1 mg/mL in 50% PBS, 50% glycerol, plus 5mM NaN3
Applications:	Immunofluorescence: 1:2,000-5,000 Immunohistochemistry: 1:2,000-5,000 Immunoprecipitation: 1:2,000-5,000 Western Blot: 1:2,000-5,000		
Storage:	Dilutions listed as a recommendation. Optimal dilution should be determined by investigator. Antibody can also be aliquotted and stored frozen at -20° C in a manual defrost freezer for six months without detectable loss of activity. The antibody can be stored at 2° - 8° C for 1 month without detectable loss of activity. Avoid repeated freeze-thaw cycles.		

Application Notes

Description/Data

Fibrillarin is a highly conserved component of a nucleolar small ribonucleoprotein complex in mammals, involved in the processing of ribosomal RNA during ribosomal biogenesis. Fibrillarin was originally identified in humans since autoantibodies staining nucleoli were seen in some patients with the autoimmune disease scleroderma. Subsequently the protein fibrillarin was found to be the human homologue of Nop1p, a *Saccharomyces cerevisiae* nucleolar protein. Autoantibodies to fibrillarin are also seen in patients with the autoimmune disease systemic sclerosis.



RA22147 was made against recombinant human fibrillarin expressed in and purified from *E. coli*.

Image: Immunofluorescent analysis of HeLa cells stained with rabbit pAb to fibrillarin, RA22147, dilution 1:5,000 in red, and costained with chicken pAb to vimentin. The blue is Hoechst staining of nuclear DNA. The antibody detects protein expressed in nucleoli of cells, while the vimentin antibody produces strong staining of cytoplasmic intermediate filaments.

FOR RESEARCH USE ONLY

NEUROMICS' REAGENTS ARE FOR IN VITRO AND CERTAIN NON-HUMAN IN VIVO EXPERIMENTAL USE ONLY AND NOT INTENDED FOR USE IN ANY HUMAN CLINICAL INVESTIGATION, DIAGNOSIS, PROGNOSIS, OR TREATMENT. THE ABOVE ANALYSES ARE MERELY TYPICAL GUIDES. THEY ARE NOT TO BE CONSTRUED AS BEING SPECIFICATIONS. ALL OF THE ABOVE INFORMATION IS, TO THE BEST OF OUR KNOWLEDGE, TRUE AND ACCURATE. HOWEVER, SINCE THE CONDITIONS OF USE ARE BEYOND OUR CONTROL, ALL RECOMMENDATIONS OR SUGGESTIONS ARE MADE WITHOUT GUARANTEE, EXPRESS OR IMPLIED, ON OUR PART. WE DISCLAIM ALL LIABILITY IN CONNECTION WITH THE USE OF THE INFORMATION CONTAINED HEREIN OR OTHERWISE, AND ALL SUCH RISKS ARE ASSUMED BY THE USER. WE FURTHER EXPRESSLY DISCLAIM ALL WARRANTIES OF MERCHANTABILITY AND FITNESS FOR A PARTICULAR PURPOSE.-V1-10/2013