



Catalog Number:	GT15190	Host:	Sheep
Product Type:	Affinity Purified Sheep IgG	Species Reactivity:	Human
Immunogen Sequence:	Purified, CHO cell-derived, recombinant human CD31 (rhCD31) extracellular domain.	Format:	Liquid 1mg/ml Solution in phosphate-buffered saline (PBS) with 5% Trehlose
Applications:	Immunohistochemistry: 2-15µg/mL. Western Blot: 0.1 – 0.2 µg/mL ELISA: 0.5 – 1.0 µg/mL		

Dilutions listed as a recommendation. Optimal dilution should be determined by investigator.

Storage: Antibody can be aliquotted and stored frozen at -20° C to -70° C in a manual defrost freezer for six months without detectable loss of activity. The antibody can be stored at 2° - 8° C for 1 month without detectable loss of activity. *Avoid repeated freeze-thaw cycles.*

Application Notes

Specificity

This antibody has been selected for its ability to recognize human CD31 in the applications listed below. In direct ELISAs and western blots, this antibody shows less than 1% cross-reactivity with rhEpCAM, rhNCAM L1, rhBCAM and rhICAM-3.

Immunohistochemistry

This antibody will detect CD31 in cells and tissues. The working dilution is 2 - 15 µg/mL.

Western Blot

This antibody can be used at 0.1 - 0.2 µg/mL with the appropriate secondary reagents to detect human CD31. The detection limit for rhCD31 is approximately 2 ng/lane under non-reducing and reducing conditions.

Direct ELISA

This antibody can be used at 0.5 - 1.0 µg/mL with the appropriate secondary reagents to detect human CD31. The detection limit for rhCD31 is approximately 0.06 ng/well.

Description/Data:

The CD31 adhesion molecule, also known as PECAM-1, is expressed in large amounts on endothelial cells at intercellular junctions, on T cell subsets, and to a lesser extent, on platelets and most leukocytes. CD31 is required for the transendothelial migration of leukocytes through the intercellular spaces between vascular endothelial cells.

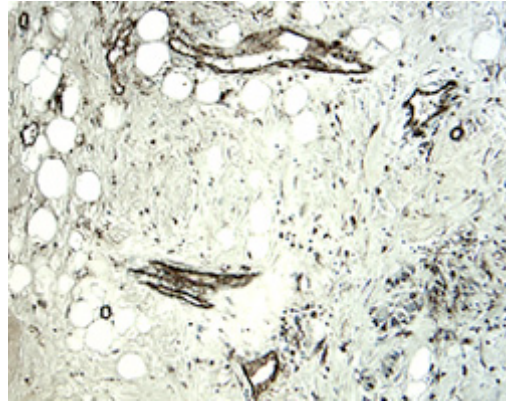
FOR RESEARCH USE ONLY

NEUROMICS' REAGENTS ARE FOR IN VITRO AND CERTAIN NON-HUMAN IN VIVO EXPERIMENTAL USE ONLY AND NOT INTENDED FOR USE IN ANY HUMAN CLINICAL INVESTIGATION, DIAGNOSIS, PROGNOSIS, OR TREATMENT. THE ABOVE ANALYSES ARE MERELY TYPICAL GUIDES. THEY ARE NOT TO BE CONSTRUED AS BEING SPECIFICATIONS. ALL OF THE ABOVE INFORMATION IS, TO THE BEST OF OUR KNOWLEDGE, TRUE AND ACCURATE. HOWEVER, SINCE THE CONDITIONS OF USE ARE BEYOND OUR CONTROL, ALL RECOMMENDATIONS OR SUGGESTIONS ARE MADE WITHOUT GUARANTEE, EXPRESS OR IMPLIED, ON OUR PART. WE DISCLAIM ALL LIABILITY IN CONNECTION WITH THE USE OF THE INFORMATION CONTAINED HEREIN OR OTHERWISE, AND ALL SUCH RSKS ARE ASSUMED BY THE USER. WE FURTHER EXPRESSLY DISCLAIM ALL WARRANTIES OF MERCHANTABILITY AND FITNESS FOR A PARTICULAR PURPOSE. V3-08/2012

www.neuromics.com

Neuromics Antibodies • 5325 West 74th Street, Suite 8 • Edina, MN 55439
phone 866-350-1500 • fax 612-677-3976 • e-mail pshuster@neuromics.com

Image: CD31 staining of paraffin-embedded human breast cancer tissue sections. (dilutions 5 µg/mL). Tissues were stained using anti-sheep HRP-DAB (brown-red) and counterstained with hematoxylin (blue).



FOR RESEARCH USE ONLY

NEUROMICS' REAGENTS ARE FOR IN VITRO AND CERTAIN NON-HUMAN IN VIVO EXPERIMENTAL USE ONLY AND NOT INTENDED FOR USE IN ANY HUMAN CLINICAL INVESTIGATION, DIAGNOSIS, PROGNOSIS, OR TREATMENT. THE ABOVE ANALYSES ARE MERELY TYPICAL GUIDES. THEY ARE NOT TO BE CONSTRUED AS BEING SPECIFICATIONS. ALL OF THE ABOVE INFORMATION IS, TO THE BEST OF OUR KNOWLEDGE, TRUE AND ACCURATE. HOWEVER, SINCE THE CONDITIONS OF USE ARE BEYOND OUR CONTROL, ALL RECOMMENDATIONS OR SUGGESTIONS ARE MADE WITHOUT GUARANTEE, EXPRESS OR IMPLIED, ON OUR PART. WE DISCLAIM ALL LIABILITY IN CONNECTION WITH THE USE OF THE INFORMATION CONTAINED HEREIN OR OTHERWISE, AND ALL SUCH RSKS ARE ASSUMED BY THE USER. WE FURTHER EXPRESSLY DISCLAIM ALL WARRANTIES OF MERCHANTABILITY AND FITNESS FOR A PARTICULAR PURPOSE. V3-08/2012

www.neuromics.com

Neuromics Antibodies • 5325 West 74th Street, Suite 8 • Edina, MN 55439
phone 866-350-1500 • fax 612-677-3976 • e-mail pshuster@neuromics.com