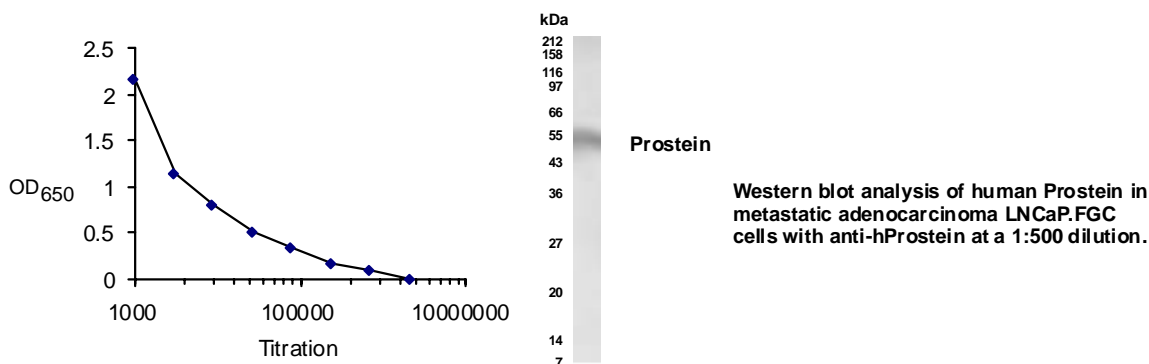


## Prostein Polyclonal Antibody

---

|                        |  |
|------------------------|--|
| <b>Catalog Number:</b> | RA19041  |
| <b>Lot Number:</b>     | 5120   |
| <b>Quantity:</b>       | 100 µg in 100 µl (1 mg/ml) in PBS containing 0.02% sodium azide.   |
| <b>Description:</b>    | Prostein is a novel prostate-specific protein and marker expressed in normal and malignant prostate tissues. It is expressed in prostate tissues both at the plasma membrane and in the cytoplasm. |
| <b>Host Species:</b>   | Rabbit   |
| <b>Specificity:</b>    | Reacts with the N terminal sequence ITYVPPLLLLEVGVEE and the C terminal sequence FATQVVFDKSDLAKYSA of the human Prostein protein.  |



|                      |   |
|----------------------|---|
| <b>Applications:</b> | Western blot – Use at 1:500 to 1:1,000 dilution. However, the investigator should determine the optimal dilution for a specific application such as immunohistochemistry. |
| <b>Format:</b>       | Affinity purified IgG   |
| <b>Storage:</b>      | Maintain at +2-8°C for 3 months or at -20°C for longer periods. Stable for 1 year. Avoid repeated freeze-thaw cycles.   |
| <b>Reference:</b>    | Xu J et al. Cancer Res 2001 Feb 15;61(4):1563-8.  |

---

FOR RESEARCH USE ONLY

v1

Neuromics' reagents are for in vitro and certain non-human in vivo experimental use only and not intended for use in any human clinical investigation, diagnosis, prognosis, or treatment. We disclaim all liability in connection with the use of the information contained herein or otherwise, and all such risks are assumed by the user.