



| | | | |
|----------------------------|--|----------------------------|--|
| Catalog Number: | RA22939 | Host: | Rabbit |
| Product Type: | Whole Serum | Species Reactivity: | Rat |
| Immunogen Sequence: | Synthetic histamine coupled to succinylated keyhole limpet hemocyanin (KLH) with carbodiimide (CDI) linker. | Format: | Lyophilized. 100 ul with 0.09% sodium azide as a preservative. |
| Applications: | Immunohistochemistry: 1:500-1:1000 (in PBS/0.3% Triton X-100 using Cy3 technique) 1:4,000-1:6,000 (in PBS/0.3% Triton X-100 using Bn/Av-HRP technique) <i>Dilutions listed as a recommendation. Optimal dilution should be determined by investigator</i> | | |
| Storage: | Maintain at +2-8°C for 3 months or at -20°C for longer periods. Stable for 1 year. Avoid repeated freeze-thaw cycles. | | |

Application Notes

Tissue Preparation:

10 µm cryostat (vibratome sections are not recommended).

•Fixation: 4% carbodiimide in phosphate buffered saline, pH 7.4; 200 mL over ~ 20 min.

•Post Fixation: 1.5 hr. at 4°C in 4% carbodiimide in phosphate buffered saline, pH 7.4.

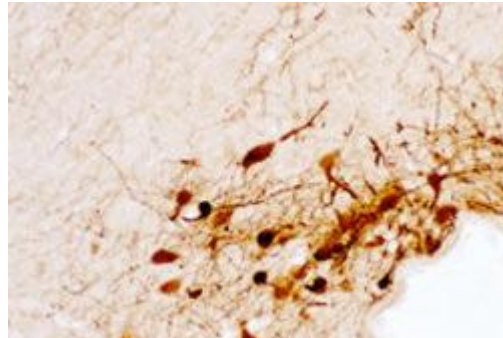
Immunohistochemistry:

In rat hypothalamus the antiserum has significant staining at a 1/500-1/1000 dilution using the indirect immunofluorescent method and significant staining at a 1/4,000-1/6,000 dilution using the biotin-streptavidin/HRP staining method. All staining is blocked by preabsorption of the antiserum with Histamine conjugate. Cross reactivity experiments indicate no cross reactivity with L-histidine or L-histidine containing peptides such as LH-RH.

Description/Data:

Histamine is located in mast cells, endocrine cells of the gut, blood cells and in some cells of the peripheral and central nervous system. Histamine is a potent vasodilator when secreted by mast cells found in various tissues as a result of allergic hypersensitivity or inflammation. In the central nervous system, Histamine is putative neurotransmitter. In the brain, its highest content has been found in the hypothalamus and in certain areas of the mesencephalon. The Histamine antiserum has a sensitivity level capable of detecting the low level Histamine contents of the brain.

Image: Histamine staining of rat hypothalamus.



FOR RESEARCH USE ONLY

NEUROMICS' REAGENTS ARE FOR IN VITRO AND CERTAIN NON-HUMAN IN VIVO EXPERIMENTAL USE ONLY AND NOT INTENDED FOR USE IN ANY HUMAN CLINICAL INVESTIGATION, DIAGNOSIS, PROGNOSIS, OR TREATMENT. THE ABOVE ANALYSES ARE MERELY TYPICAL GUIDES. THEY ARE NOT TO BE CONSTRUED AS BEING SPECIFICATIONS. ALL OF THE ABOVE INFORMATION IS, TO THE BEST OF OUR KNOWLEDGE, TRUE AND ACCURATE. HOWEVER, SINCE THE CONDITIONS OF USE ARE BEYOND OUR CONTROL, ALL RECOMMENDATIONS OR SUGGESTIONS ARE MADE WITHOUT GUARANTEE, EXPRESS OR IMPLIED, ON OUR PART. WE DISCLAIM ALL LIABILITY IN CONNECTION WITH THE USE OF THE INFORMATION CONTAINED HEREIN OR OTHERWISE, AND ALL SUCH RISKS ARE ASSUMED BY THE USER. WE FURTHER EXPRESSLY DISCLAIM ALL WARRANTIES OF MERCHANTABILITY AND FITNESS FOR A PARTICULAR PURPOSE.-V2/08/2012

www.neuromics.com

Neuromics Antibodies • 5325 West 74th Street, Suite 8 • Edina, MN 55439
phone 866-350-1500 • fax 612-677-3976 • e-mail: pshuster@neuromics.com