



Catalog Number: RA25062

Host: Rabbit

Product Type: Whole Serum Antibody

Species Reactivity: Human, Rat, Bovine, Mouse

Immunogen Sequence: Recombinant Protein

Format: Whole serum with .05% Sodium Azide.

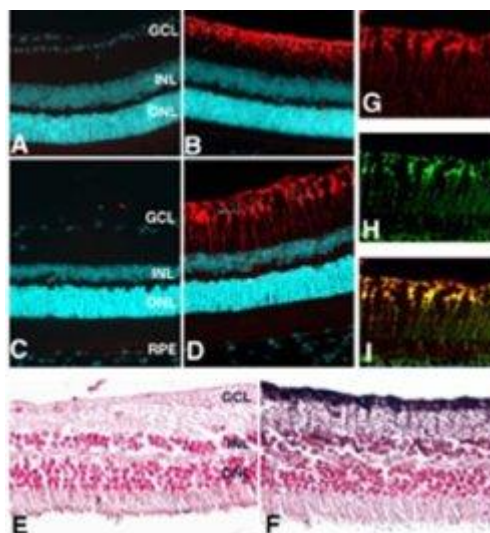
Applications: Western blot-1:10,000
Immunohistochemistry 1:25,000 with ABC amplification.

Dilutions listed as a recommendation. Optimal dilution should be determined by investigator.

Storage: Store frozen. Aliquot as undiluted antisera and immediately place at -20°C. Antisera may have become trapped in top of vial during shipping. Centrifugation of vial is recommended before opening. Stable for at least 6 months at -20°C. Repeated freeze/thaw cycles compromise the integrity of the antiserum.

Application Notes

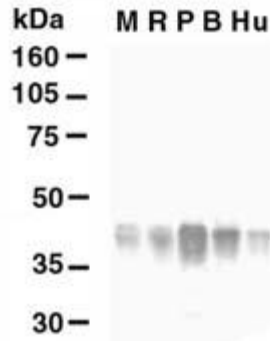
Images: Localization of glutamine synthase in the retina. Paraffin sections of mouse (A, B), rat (C, D, G-I), or human (E, F) retina fixed in 4% paraformaldehyde were reacted with anti-glutamine synthase (red fluorescence staining in B, D, G, I, and brown immuno-peroxidase reaction [using ABC kit and visualization with DAB product in F]. Nuclei in some immunofluorescence experiments (A-D) were stained with DAPI (shown in cyan), and with nuclear fast red in E and F. On inspection at low magnification, anti- glutamine synthase reacted with a single population of cells extending from the ganglion cell layer (GCL) through the inner nuclear layer (INL). No signal was detected in controls either pre-incubated with 100ug/ml of the immunizing peptide (A) or with pre-immune serum (C, E). The pattern of staining observed in all experiments is typical of Müller cells. This finding was confirmed by co-localization (indicated by yellow in I) of glutamine synthase (red in G) with another marker of glutamine synthase (green in H).



FOR RESEARCH USE ONLY

NEUROMICS' REAGENTS ARE FOR IN VITRO AND CERTAIN NON-HUMAN IN VIVO EXPERIMENTAL USE ONLY AND NOT INTENDED FOR USE IN ANY HUMAN CLINICAL INVESTIGATION, DIAGNOSIS, PROGNOSIS, OR TREATMENT. THE ABOVE ANALYSES ARE MERELY TYPICAL GUIDES. THEY ARE NOT TO BE CONSTRUED AS BEING SPECIFICATIONS. ALL OF THE ABOVE INFORMATION IS, TO THE BEST OF OUR KNOWLEDGE, TRUE AND ACCURATE. HOWEVER, SINCE THE CONDITIONS OF USE ARE BEYOND OUR CONTROL, ALL RECOMMENDATIONS OR SUGGESTIONS ARE MADE WITHOUT GUARANTEE, EXPRESS OR IMPLIED, ON OUR PART. WE DISCLAIM ALL LIABILITY IN CONNECTION WITH THE USE OF THE INFORMATION CONTAINED HEREIN OR OTHERWISE, AND ALL SUCH RSKS ARE ASSUMED BY THE USER. WE FURTHER EXPRESSLY DISCLAIM ALL WARRANTIES OF MERCHANTABILITY AND FITNESS FOR A PARTICULAR PURPOSE. V2-01/13

Images: Western blot analysis of glutamine synthase. 40ug of lysates from mouse (lane M), rat (lane R), pig (lane P), bovine (lane B), or human (lane Hu) retina were probed. A 34 kDa band was identified.



FOR RESEARCH USE ONLY

NEUROMICS' REAGENTS ARE FOR IN VITRO AND CERTAIN NON-HUMAN IN VIVO EXPERIMENTAL USE ONLY AND NOT INTENDED FOR USE IN ANY HUMAN CLINICAL INVESTIGATION, DIAGNOSIS, PROGNOSIS, OR TREATMENT. THE ABOVE ANALYSES ARE MERELY TYPICAL GUIDES. THEY ARE NOT TO BE CONSTRUED AS BEING SPECIFICATIONS. ALL OF THE ABOVE INFORMATION IS, TO THE BEST OF OUR KNOWLEDGE, TRUE AND ACCURATE. HOWEVER, SINCE THE CONDITIONS OF USE ARE BEYOND OUR CONTROL, ALL RECOMMENDATIONS OR SUGGESTIONS ARE MADE WITHOUT GUARANTEE, EXPRESS OR IMPLIED, ON OUR PART. WE DISCLAIM ALL LIABILITY IN CONNECTION WITH THE USE OF THE INFORMATION CONTAINED HEREIN OR OTHERWISE, AND ALL SUCH RSKS ARE ASSUMED BY THE USER. WE FURTHER EXPRESSLY DISCLAIM ALL WARRANTIES OF MERCHANTABILITY AND FITNESS FOR A PARTICULAR PURPOSE. V2-01/13

www.neuromics.com

Neuromics Antibodies • 5325 West 74th Street, Suite 8 • Edina, MN 55439
phone 866-350-1500 • fax 612-677-3976 • e-mail pshuster@neuromics.com