



Catalog Number:	CH22115	Host:	Chicken
Product Type:	Chicken Polyclonal IgY	Species Reactivity:	All mammalian
Immunogen Sequence:	Antibody was raised in chicken against recombinant full length His tagged mCherry purified from <i>E. coli</i> .	Format:	Liquid with 10mM sodium azide
Applications:	Immunofluorescence: 1:1000 Immunohistochemistry: 1:1000 Immunocytochemistry: 1:1000 Western Blot: 1:2,000		

Dilutions listed as a recommendation. Optimal dilution should be determined by investigator.

Storage: Antibody can also be aliquotted and stored frozen at -20° C to -70° C in a manual defrost freezer for six months without detectable loss of activity. The antibody can be stored at 2° - 8° C for 1 month without detectable loss of activity. Avoid repeated freeze-thaw cycles.

Application Notes

Description/Data:

Image: HeK293 cells transfected in the same way and viewed in the confocal microscope. Most HeK293 cells are not transfected so only the nucleus of these cells can be visualized with a blue DNA stain. Cells which are transfected with Cherry are bright red. Staining with CH22115 is shown in Green. Green antibody staining is only seen cells which express Cherry, as expected, and the superimposition of the green and red results in an orange signal. Interestingly stronger Cherry staining is seen in the nucleus, possibly due to degradation of some Cherry molecules to release the low molecular weight Cherry fluorochrome.

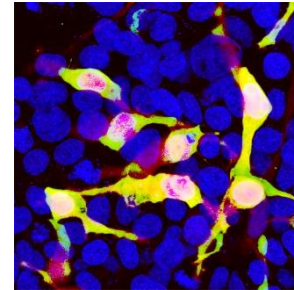
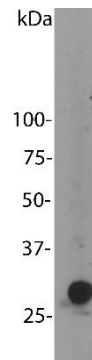


Image: Blot of HEK293 cells transfected with pFin-EF1-mCherry vector, courtesy of the Semple-Rowland lab at the University of Florida. There is a strong clean band at about 30 kDa. HEK293 cells which were not transfected with this vector show no protein bands.



FOR RESEARCH USE ONLY

NEUROMICS' REAGENTS ARE FOR IN VITRO AND CERTAIN NON-HUMAN IN VIVO EXPERIMENTAL USE ONLY AND NOT INTENDED FOR USE IN ANY HUMAN CLINICAL INVESTIGATION, DIAGNOSIS, PROGNOSIS, OR TREATMENT. THE ABOVE ANALYSES ARE MERELY TYPICAL GUIDES. THEY ARE NOT TO BE CONSTRUED AS BEING SPECIFICATIONS. ALL OF THE ABOVE INFORMATION IS, TO THE BEST OF OUR KNOWLEDGE, TRUE AND ACCURATE. HOWEVER, SINCE THE CONDITIONS OF USE ARE BEYOND OUR CONTROL, ALL RECOMMENDATIONS OR SUGGESTIONS ARE MADE WITHOUT GUARANTEE, EXPRESS OR IMPLIED, ON OUR PART. WE DISCLAIM ALL LIABILITY IN CONNECTION WITH THE USE OF THE INFORMATION CONTAINED HEREIN OR OTHERWISE, AND ALL SUCH RISKS ARE ASSUMED BY THE USER. WE FURTHER EXPRESSLY DISCLAIM ALL WARRANTIES OF MERCHANTABILITY AND FITNESS FOR A PARTICULAR PURPOSE.-V2/08/2012