

# NEUROMICS



## mCherry

## Data Sheet

<b>Catalog Number:</b>	RA22117	<b>Host:</b>	Rabbit
<b>Product Type:</b>	Affinity Purified	<b>Species Reactivity:</b>	All mammalian
<b>Immunogen Sequence:</b>	Recombinant full length His tagged mCherry purified from E. coli	<b>Format:</b>	Immunogen affinity purified antibody at 1mg/mL in 50% PBS, 50% glycerol plus 5mM NaN3
<b>Applications:</b>	Immunofluorescence: 1:500 Western Blot: 1:1,000		
	Dilutions listed as a recommendation. Optimal dilution should be determined by investigator.		
<b>Storage:</b>	Antibody can also be aliquotted and stored frozen at -20° C to -70° C in a manual defrost freezer for six months without detectable loss of activity. The antibody can be stored at 2° - 8° C for 1 month without detectable loss of activity. Avoid repeated freeze-thaw cycles.		

### Application Notes

#### Description/Data:

Image: HEK293 cells transfected in the same way and viewed in the confocal microscope. Most HEK293 cells are not transfected so only the nucleus of these cells can be visualized with a blue DNA stain. Cells which are transfected with mCherry are red. Staining with RPCA-mCherry is shown in Green. Green antibody staining is only seen in cells which express mCherry, as expected, and the superimposition of the green and red signals results in an orange signal. Interestingly, stronger mCherry staining is seen in the nucleus, possibly due to degradation of some mCherry molecules to release the low molecular weight mCherry fluorochrome. Image courtesy of the Semple-Rowland lab at the University of Florida.

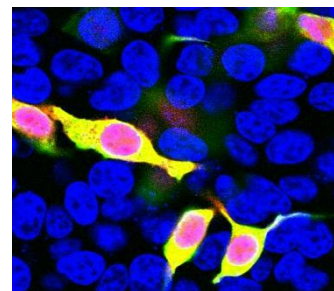
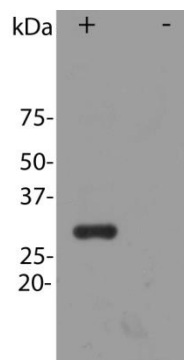


Image: Blot of HEK293 cells transfected with pFin-EF1-mCherry vector, in the lane marked "+". HEK293 cells which were not transfected with this vector show no protein band in lane marked "-". Image courtesy of the Semple-Rowland lab at the University of Florida.



**FOR RESEARCH USE ONLY**

NEUROMICS' REAGENTS ARE FOR IN VITRO AND CERTAIN NON-HUMAN IN VIVO EXPERIMENTAL USE ONLY AND NOT INTENDED FOR USE IN ANY HUMAN CLINICAL INVESTIGATION, DIAGNOSIS, PROGNOSIS, OR TREATMENT. THE ABOVE ANALYSES ARE MERELY TYPICAL GUIDES. THEY ARE NOT TO BE CONSTRUED AS BEING SPECIFICATIONS. ALL OF THE ABOVE INFORMATION IS, TO THE BEST OF OUR KNOWLEDGE, TRUE AND ACCURATE. HOWEVER, SINCE THE CONDITIONS OF USE ARE BEYOND OUR CONTROL, ALL RECOMMENDATIONS OR SUGGESTIONS ARE MADE WITHOUT GUARANTEE, EXPRESS OR IMPLIED, ON OUR PART. WE DISCLAIM ALL LIABILITY IN CONNECTION WITH THE USE OF THE INFORMATION CONTAINED HEREIN OR OTHERWISE, AND ALL SUCH RISKS ARE ASSUMED BY THE USER. WE FURTHER EXPRESSLY DISCLAIM ALL WARRANTIES OF MERCHANTABILITY AND FITNESS FOR A PARTICULAR PURPOSE.-V2/08/2012

[www.neuromics.com](http://www.neuromics.com)

Neuromics Antibodies • 5325 West 74<sup>th</sup> Street, Suite 8 • Edina, MN 55439  
phone 866-350-1500 • fax 612-677-3976 • e-mail: [pshuster@neuromics.com](mailto:pshuster@neuromics.com)