



## CCK A Receptor

## Datasheet

---

<b>Catalog Number:</b>	RA15049	<b>Host:</b>	Rabbit
<b>Product Type:</b>	Affinity Purified	<b>Species Reactivity:</b>	Human, Rat, Mouse
<b>Immunogen Sequence:</b>	synthetic peptide rat CCK-A R (a.a. 256 – 267).	<b>Format:</b>	Lyophilized from a 0.2 µm filtered solution in PBS with Trehalose. Reconstitute with sterile PBS.
<b>Applications:</b>	Immunohistochemistry: 1.5-15 µg/mL Western Blot: 0.1 – 0.2 µg/mL ELISA: 0.5 - 1.0 µg/mL		
<b>Storage:</b>	Dilutions listed as a recommendation. Optimal dilution should be determined by investigator. Antibody can be aliquotted and stored frozen at -20° C to -70° C in a manual defrost freezer for six months without detectable loss of activity. The antibody can be stored at 2° - 8° C for 1 month without detectable loss of activity. <i>Avoid repeated freeze-thaw cycles.</i>		

---

### Application Notes

#### Specificity

In immunohistochemistry experiments this antibody detects CCK-A R in rat, mouse and human tissues. Reactivity with CCK-A R from other species has not been determined.

#### Immunohistochemistry

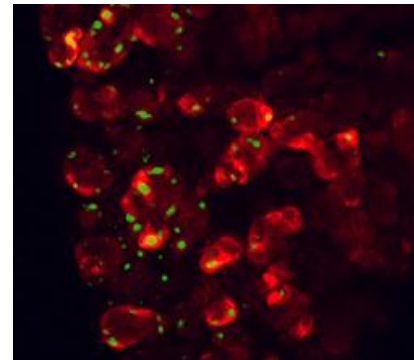
This antibody can be used on human formalin-fixed paraffin-embedded tissue sections and on mouse and rat cryostat tissue sections. The recommended working dilution is 1.5 - 15 µg/mL. Labeling for CCK-A R can be seen in the cytoplasm and plasma membrane of positive cells. Heat-induced epitope retrieval techniques may be required to improve intensity of CCK-A R labeling.

#### Western blotting

This antibody can be used to immunoblot lysates from rat, mouse and human tissues at a recommended working dilution of 0.1 µg/mL.

*Positive control tissues:* Pancreas, muscularis propria of antrum, fundus, gallbladder, and kidney.

*Image: CCK-A R staining of rat pancreatic tissue (cryostat sections). Tissue was stained using a Rhodamine Red™ X-conjugated anti-rabbit secondary antibody (red) and counterstained with Fluoro Nissl Green (green).*



**FOR RESEARCH USE ONLY**

NEUROMICS' REAGENTS ARE FOR IN VITRO AND CERTAIN NON-HUMAN IN VIVO EXPERIMENTAL USE ONLY AND NOT INTENDED FOR USE IN ANY HUMAN CLINICAL INVESTIGATION, DIAGNOSIS, PROGNOSIS, OR TREATMENT. THE ABOVE ANALYSES ARE MERELY TYPICAL GUIDES. THEY ARE NOT TO BE CONSTRUED AS BEING SPECIFICATIONS. ALL OF THE ABOVE INFORMATION IS, TO THE BEST OF OUR KNOWLEDGE, TRUE AND ACCURATE. HOWEVER, SINCE THE CONDITIONS OF USE ARE BEYOND OUR CONTROL, ALL RECOMMENDATIONS OR SUGGESTIONS ARE MADE WITHOUT GUARANTEE, EXPRESS OR IMPLIED, ON OUR PART. WE DISCLAIM ALL LIABILITY IN CONNECTION WITH THE USE OF THE INFORMATION CONTAINED HEREIN OR OTHERWISE, AND ALL SUCH RISKS ARE ASSUMED BY THE USER. WE FURTHER EXPRESSLY DISCLAIM ALL WARRANTIES OF MERCHANTABILITY AND FITNESS FOR A PARTICULAR PURPOSE.-v2-11/2011

---

[www.neuromics.com](http://www.neuromics.com)

Neuromics • 5325 West 74<sup>th</sup> Street, Suite 8 • Edina, MN 55439  
phone 866-350-1500 • fax 612-677-3976 • e-mail [pshuster@neuromics.com](mailto:pshuster@neuromics.com)