



Catalog Number: CH23000

Product Type: Affinity Purified

Host: Chicken

Species: Human, Mouse

Immunogen Sequence: Peptide corresponded to a region of the

Choline Acetyltransferase gene product (P_066264, 0.9%, w/v) with sodium azide (Q03059, NCBI) and mouse (0.02%, w/v). sequences.

Reactivity:

Format: Liquid

Applications: **Immunocytochemistry:** 1:100 -1:200

Immunohistochemistry: 1:100 -1:200

Western blot: 1:250 -1:500

Dilutions listed as a recommendation. Optimal dilution should be determined by investigator.

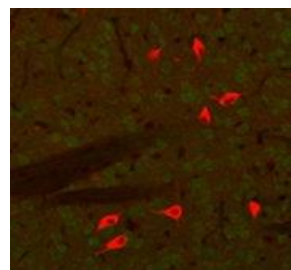
Storage: **Store at 4°C in the dark.** Under these conditions, the antibody should have a shelf life of at least 12 months (provided they remain sterile). Do not freeze the antibody unless you want to store it for longer periods of time. Note, however, that each time an antibody preparation is frozen, about half its binding activity is lost.

Application Notes

Sample Protocol

1. Start with paraformaldehyde-fixed (4%) paraffin-embedded sections of adult mouse brain
2. After de-paraffination with alcohol and xylene, wash the slides in PBS.
3. Heat-treatment can be used. – 90-95°C treatment for 30 minutes in sodium-citrate buffered PBS has been known improved staining.
4. Treat sections with 1% goat serum in PBS at room temperature for 20 minutes
5. Incubate sections with ChAT antibody diluted (1:2000) in 1% goat serum in PBS overnight in a humidified chamber.
6. Thoroughly wash in PBS
7. Incubate with secondary antibody, such as goat anti-chicken IgY in PBS buffer supplemented with 1% goat serum for 1 hour
8. Thoroughly wash in PBS
9. Mount slides with fluorescence mounting media.

Image: A tissue section through an adult mouse brain showing ChAT (red staining) in cholinergic neurons of the caudate-putamen nucleus.



FOR RESEARCH USE ONLY

NEUROMICS' REAGENTS ARE FOR IN VITRO AND CERTAIN NON-HUMAN IN VIVO EXPERIMENTAL USE ONLY AND NOT INTENDED FOR USE IN ANY HUMAN CLINICAL INVESTIGATION, DIAGNOSIS, PROGNOSIS, OR TREATMENT. THE ABOVE ANALYSES ARE MERELY TYPICAL GUIDES. THEY ARE NOT TO BE CONSTRUED AS BEING SPECIFICATIONS. ALL OF THE ABOVE INFORMATION IS, TO THE BEST OF OUR KNOWLEDGE, TRUE AND ACCURATE. HOWEVER, SINCE THE CONDITIONS OF USE ARE BEYOND OUR CONTROL, ALL RECOMMENDATIONS OR SUGGESTIONS ARE MADE WITHOUT GUARANTEE, EXPRESS OR IMPLIED, ON OUR PART. WE DISCLAIM ALL LIABILITY IN CONNECTION WITH THE USE OF THE INFORMATION CONTAINED HEREIN OR OTHERWISE, AND ALL SUCH RISKS ARE ASSUMED BY THE USER. WE FURTHER EXPRESSLY DISCLAIM ALL WARRANTIES OF MERCHANTABILITY AND FITNESS FOR A PARTICULAR PURPOSE. -V2/08/2012