



Catalog Number:	RA25058	Host:	Rabbit
Product Type:	Affinity Purified Antibody	Species Reactivity:	Human, Rat, Mouse, Bovine, Xenopus

Immunogen Sequence:	A synthetic peptide made to an internal portion of the human LC3 protein sequence (between residues 25-121).	Format:	Liquid. PBS, 30% glycerol and 0.02% Sodium Azide. 1.2 mg/ml.
----------------------------	--	----------------	--

Applications: Immunohistochemistry 1:200-1:400, Immunoprecipitation 20ug/500ug of protein Western Blot 2 ug/m

Dilutions listed only as a recommendation. Optimal dilution should be determined by investigator.

Storage: Store frozen. Aliquot as undiluted antisera and immediately place at -20°C. Antisera may have become trapped in top of vial during shipping. Centrifugation of vial is recommended before opening. Stable for at least 6 months at -20°C. Repeated freeze/thaw cycles compromise the integrity of the antiserum.

Application Notes

LC3-I is cytoplasmic. LC3-II binds to the autophagic membranes.

By Western blot, bands are seen at ~19 kDa, representing LC3-I, and ~17 kDa, representing LC3-II. There are also a few non-specific bands above ~32 kDa in mouse protein. *Positive Controls:* Human and mouse brain lysates.

FOR RESEARCH USE ONLY

NEUROMICS' REAGENTS ARE FOR IN VITRO AND CERTAIN NON-HUMAN IN VIVO EXPERIMENTAL USE ONLY AND NOT INTENDED FOR USE IN ANY HUMAN CLINICAL INVESTIGATION, DIAGNOSIS, PROGNOSIS, OR TREATMENT. THE ABOVE ANALYSES ARE MERELY TYPICAL GUIDES. THEY ARE NOT TO BE CONSTRUED AS BEING SPECIFICATIONS. ALL OF THE ABOVE INFORMATION IS, TO THE BEST OF OUR KNOWLEDGE, TRUE AND ACCURATE. HOWEVER, SINCE THE CONDITIONS OF USE ARE BEYOND OUR CONTROL, ALL RECOMMENDATIONS OR SUGGESTIONS ARE MADE WITHOUT GUARANTEE, EXPRESS OR IMPLIED, ON OUR PART. WE DISCLAIM ALL LIABILITY IN CONNECTION WITH THE USE OF THE INFORMATION CONTAINED HEREIN OR OTHERWISE, AND ALL SUCH RISKS ARE ASSUMED BY THE USER. WE FURTHER EXPRESSLY DISCLAIM ALL WARRANTIES OF MERCHANTABILITY AND FITNESS FOR A PARTICULAR PURPOSE.-V2-01/13

www.neuromics.com

Neuromics Antibodies □ 5325 West 74th Street, Suite 8 □ Edina, MN 55439
phone 866-350-1500 □ fax 612-677-3976 □ e-mail pshuster@neuromics.com

Image: LC3 staining of Human Cerebral Cortex

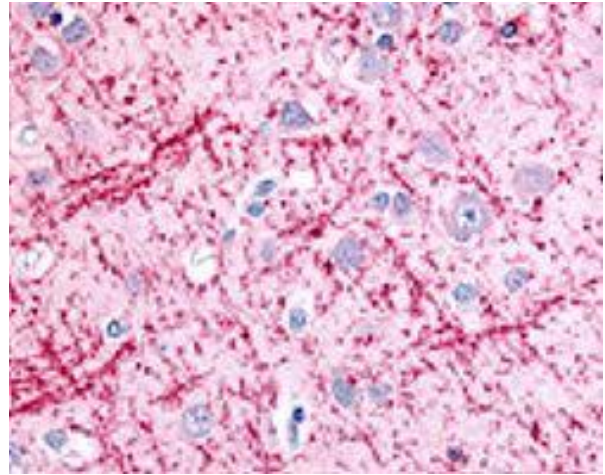
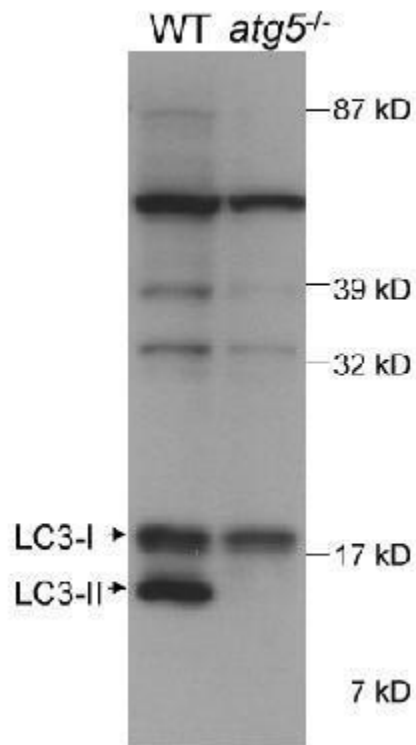


Image: Detection of autophagic LC3 in mouse ES cell lysate. The *atg5*^{-/-} lane (ES cells, cultured to form embryonic bodies, that are deficient in conversion of LC31 to LC3-11) demonstrates the specificity of LC3, as there is no detection of LC3-11. Photo courtesy of Dr. Beth Levine, UT Southwestern Medical Center.



FOR RESEARCH USE ONLY

NEUROMICS' REAGENTS ARE FOR IN VITRO AND CERTAIN NON-HUMAN IN VIVO EXPERIMENTAL USE ONLY AND NOT INTENDED FOR USE IN ANY HUMAN CLINICAL INVESTIGATION, DIAGNOSIS, PROGNOSIS, OR TREATMENT. THE ABOVE ANALYSES ARE MERELY TYPICAL GUIDES. THEY ARE NOT TO BE CONSTRUED AS BEING SPECIFICATIONS. ALL OF THE ABOVE INFORMATION IS, TO THE BEST OF OUR KNOWLEDGE, TRUE AND ACCURATE. HOWEVER, SINCE THE CONDITIONS OF USE ARE BEYOND OUR CONTROL, ALL RECOMMENDATIONS OR SUGGESTIONS ARE MADE WITHOUT GUARANTEE, EXPRESS OR IMPLIED, ON OUR PART. WE DISCLAIM ALL LIABILITY IN CONNECTION WITH THE USE OF THE INFORMATION CONTAINED HEREIN OR OTHERWISE, AND ALL SUCH RISKS ARE ASSUMED BY THE USER. WE FURTHER EXPRESSLY DISCLAIM ALL WARRANTIES OF MERCHANTABILITY AND FITNESS FOR A PARTICULAR PURPOSE.-V2-01/13

www.neuromics.com

Neuromics Antibodies □ 5325 West 74th Street, Suite 8 □ Edina, MN 55439
phone 866-350-1500 □ fax 612-677-3976 □ e-mail pshuster@neuromics.com