



## Lep-Rb (OB-Rb)

## Data Sheet

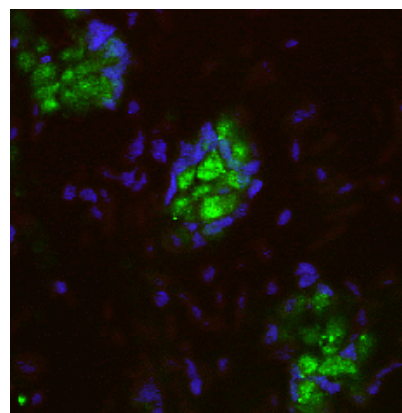
---

<b>Catalog Number:</b>	CH14104	<b>Host:</b>	Chicken
<b>Product Type:</b>	Affinity Purified	<b>Species:</b>	Rat
<b>Immunogen Sequence:</b>	Recombinant Protein	<b>Reactivity:</b>	
		<b>Format:</b>	100 ul liquid at a concentration of 1.0 mg/ml in PBS containing 0.05% sodium azide
<b>Applications:</b>	Immunohistochemistry: 1:100-1:1000 Immunofluorescence: 1:100-1:1000 Western Blot: 1:1000 ( <a href="#">Messenger and Ciriello, 2013</a> )		
	Dilutions listed as a recommendation. Optimal dilution should be determined by investigator.		
<b>Storage:</b>	Maintain at +2-8°C for 3 months or at -20°C for longer periods. Stable for 1 year. <i>Avoid repeated freeze-thaw cycles.</i>		
<b>References:</b>	<a href="#">Pei Wang, Feng-Jiao Yang, Hui Du, Yun-Feng Guan, Tian-Ying Xu, Xue-Wen Xu, Ding-Feng Su, and Chao-Yu Miao. Involvement of Leptin Receptor Long Isoform (LepRb)-STAT3 Signaling Pathway in Brain Fat Mass- and Obesity-Associated(FTO) Downregulation during Energy Restriction.</a> © 2011 The Feinstein Institute for Medical Research, www.feinsteininstitute.org. Online address: <a href="http://www.molmed.org">http://www.molmed.org</a> . doi: 10.2119/molmed.2010.00013		
	<a href="#">Maria J. Barnes, Richard C. Rogers, Montina J. Van Meter and Gerlinda E. Hermann. Co-localization of TRHR1 and LepRb receptors on neurons in the hindbrain of the rat.</a> doi:10.1016/j.brainres.2010.07.094		
	<a href="#">Hung Hsuehou, Yi He, Abba J. Kastin, Hong Tu, Emily N. Markadakis, Richard C. Rogers, Paul B. Fossier, and Weihong Pan. Obesity induces functional astrocytic leptin receptors in hypothalamus.</a> Brain, Mar 2009; doi:10.1093/brain/awp029		

---

### Application Notes

*Image: LepRb staining in rat intestine. Detection was done using anti-chicken Cy2 conjugated antibodies (green color). Cell nuclei were counterstained with DAPI (blue color). Working dilution is 1:200-1:600.*



### FOR RESEARCH USE ONLY

NEUROMICS' REAGENTS ARE FOR IN VITRO AND CERTAIN NON-HUMAN IN VIVO EXPERIMENTAL USE ONLY AND NOT INTENDED FOR USE IN ANY HUMAN CLINICAL INVESTIGATION, DIAGNOSIS, PROGNOSIS, OR TREATMENT. THE ABOVE ANALYSES ARE MERELY TYPICAL GUIDES. THEY ARE NOT TO BE CONSTRUED AS BEING SPECIFICATIONS. ALL OF THE ABOVE INFORMATION IS, TO THE BEST OF OUR KNOWLEDGE, TRUE AND ACCURATE. HOWEVER, SINCE THE CONDITIONS OF USE ARE BEYOND OUR CONTROL, ALL RECOMMENDATIONS OR SUGGESTIONS ARE MADE WITHOUT GUARANTEE, EXPRESS OR IMPLIED, ON OUR PART. WE DISCLAIM ALL LIABILITY IN CONNECTION WITH THE USE OF THE INFORMATION CONTAINED HEREIN OR OTHERWISE, AND ALL SUCH RISKS ARE ASSUMED BY THE USER. WE FURTHER EXPRESSLY DISCLAIM ALL WARRANTIES OF MERCHANTABILITY AND FITNESS FOR A PARTICULAR PURPOSE.-V4-05/2013

**Diabetes and Obesity Research Antibodies**

Name	Catalog #	Type	Species	Applications	Size	Price
<b>4-Hydroxynonenal (HNE)</b>	GT19004	Goat IgG	H	WB	100 ul	\$295
<b>5-Hydroxymethyluridine (5-HmdU)</b>	GT19005	Goat IgG	H	WB	100 ul	\$295
<b>ABCA1</b>	MO13101	Mouse IgG	H; M; R	WB	100 ul	\$265
<b>ACE/CD143</b>	GT15145	Goat IgG	H; R	IHC; WB; FC; E	100 ug	\$365
<b>ACE/CD143-Phycoerythrin Labeled</b>	FC15000	Mouse IgG	H; R	FC	100 Tests	\$275
<b>ACTH</b>	RA21005	Rabbit IgG	H; R	ICC; IF; WB	50 ug	\$155
<b>pan Akt/KinaseB</b>	MO15107	Mouse IgG	H; M; R	IHC; WB; FC; E	100 ug	\$255
<b>Adiponutrin/ADPN</b>	GT15230	Goat IgG	H	IHC; WB; E	100 ug	\$365
<b>ATGL</b>	RA25015	Rabbit IgG	M; R	WB	100 ul	\$245
<b>Agouti-Related Protein</b>	GT15023	Goat IgG	M; R	ICC; IHC; WB; E	100 ug	\$365
<b>Agouti-Related Protein (Human)</b>	GT15040	Goat IgG	H	IHC; WB; E	100 ug	\$365
<b>Agouti-Related Protein (Mouse)</b>	MO15105	Rat IgG	M	IHC; WB; E	500 ug	\$325
<b>Agtrin</b>	MO15044	Mouse IgG	R	WB; E	50 ug 100 ug	\$115 \$205
<b>Amylin Peptide</b>	MO20003	Mouse IgG	H	IHC	100 ul	\$150
<b>APJ (Apelin Receptor)</b>	RA14111	Rabbit IgG	R	ICC; IHC	50 ul 100 ul 100 ug Blocking Peptide	\$190 \$345 \$95
<b>APJ (Apelin Receptor)</b>	MO15011	Mouse IgG	H	IHC	500 ug	\$325
<b>ApoE</b>	MO25042	Mouse IgG	H	IHC; WB; E	100 ul	\$325
<b>BDNF</b>	CH15000	Chicken IgY	H; R	IHC; WB; E	100 ug	\$365
<b>BMP-3b/GDF-10</b>	GT15166	Goat IgG	H	IHC; WB; E	100 ug	\$365
<b>c-Kit/CD117</b>	RA14132	Rabbit IgG	H; M; R	IF; IHC; FC	100 ul	\$350
<b>C-Peptide</b>	RA18034	Rabbit IgG	H; M; R	IHC	100 ul	\$325
<b>C-Reactive Protein (Human)</b>	GT15084	Sheep IgG	H	IHC; WB; E	100 ug	\$365
<b>C-Reactive Protein (Mouse)</b>	GT15090	Goat IgG	M	IHC; WB; E	100 ug	\$365
<b>C-Reactive Protein (Rat)</b>	MO15033	Mouse IgG	R	IHC; WB; E	100 ug	\$225

**FOR RESEARCH USE ONLY**

NEUROMICS' REAGENTS ARE FOR IN VITRO AND CERTAIN NON-HUMAN IN VIVO EXPERIMENTAL USE ONLY AND NOT INTENDED FOR USE IN ANY HUMAN CLINICAL INVESTIGATION, DIAGNOSIS, PROGNOSIS, OR TREATMENT. THE ABOVE ANALYSES ARE MERELY TYPICAL GUIDES. THEY ARE NOT TO BE CONSTRUED AS BEING SPECIFICATIONS. ALL OF THE ABOVE INFORMATION IS, TO THE BEST OF OUR KNOWLEDGE, TRUE AND ACCURATE. HOWEVER, SINCE THE CONDITIONS OF USE ARE BEYOND OUR CONTROL, ALL RECOMMENDATIONS OR SUGGESTIONS ARE MADE WITHOUT GUARANTEE, EXPRESS OR IMPLIED, ON OUR PART. WE DISCLAIM ALL LIABILITY IN CONNECTION WITH THE USE OF THE INFORMATION CONTAINED HEREIN OR OTHERWISE, AND ALL SUCH RISKS ARE ASSUMED BY THE USER. WE FURTHER EXPRESSLY DISCLAIM ALL WARRANTIES OF MERCHANTABILITY AND FITNESS FOR A PARTICULAR PURPOSE.-V4-05/2013

[www.neuromics.com](http://www.neuromics.com)

Neuromics Antibodies • 5325 West 74<sup>th</sup> Street, Suite 8 • Edina, MN 55439  
phone 866-350-1500 • fax 612-677-3976 • e-mail [pshuster@neuromics.com](mailto:pshuster@neuromics.com)

Name	Catalog #	Type	Species	Applications	Size	Price
<b>C-Reactive Protein (Rat)</b>	GT15086	Goat IgG	R	IHC; WB; E	100 ug	\$365
<b>CART</b>	MO15119	Mouse IgG	H	IHC; WB; E	500 ug	\$325
<b>CCK-8 (Cholecystokinin Octapeptide)</b>	RA20078	Rabbit IgG	M; R	IF; IHC	100 ul	\$395
<b>CCK A Receptor</b>	RA15049	Rabbit IgG	H; M; R	IHC; WB	50 ug 100 ul @ 2 mgs/ml	\$245 \$95
<b>CCR1</b>	MO15088	Mouse IgG	H	IHC; FC	100 ug	\$155
<b>CCR5</b>	MO15077	Mouse IgG	H	IHC; FC	100 ug	\$155
<b>CCR6</b>	MO15087	Mouse IgG	H	IHC; FC	100 ug	\$155
<b>ChREBP</b>	RA25053	Rabbit IgG	H; M; R	IF; IHC; WB	100 ul	\$285
<b>CD39</b>	GP10103	Guinea Pig IgG	R	IHC	150 ul 50 ul	\$395 \$175
<b>CNTF</b>	GT15028	Goat IgG	R	IHC; WB; E	100 ug	\$365
<b>CNTF Receptor Alpha</b>	GT15029	Goat IgG	R	IHC; WB; E	100 ug	\$365
<b>CXCL8/IL-8</b>	GT15156	Goat IgG	H	IHC; WB; E	100 ug	\$365
<b>CXCR1/IL-8 RA</b>	MO15072	Mouse IgG	H	IHC; FC	100 ug	\$155
<b>CXCR2/IL-8 RB</b>	MO15073	Mouse IgG	H	IHC; FC	100 ug	\$155
<b>CXCR4</b>	MO15022	Mouse IgG	H	IHC; FC	500 ug	\$325
<b>Cathepsin S</b>	GT15198	Goat IgG	H	IHC; WB; IP; E	100 ug	\$365
<b>Dinitrophenol (DNP)</b>	GT19002	Goat IgG	B; Ca; H; M; P; Pr; R	WB	100 ul	\$295
<b>Met-Enkephalin</b>	RA21006	Rabbit IgG	R	ICC; IF	50 ug	\$155
<b>Frk</b>	MO15104	Mouse IgG	H	IHC; E	100 ug	\$255
<b>gp130/CD130</b>	GT15072	Goat IgG	M	WB; E	100 ug	\$345
<b>gp130/CD130</b>	MO15024	Rat IgG	M	IHC; WB; FC	100 ug	\$255
<b>GAD1/GAD67</b>	GT15142	Goat IgG	H; M; R	IHC; WB; E	100 ug	\$365
<b>GAD2/GAD65</b>	GT15125	Goat IgG	H	IHC; WB; E	100 ug	\$365
<b>GAPDH</b>	MO25038	Mouse IgM	B; C; Ch; H; M; P; R	IHC; WB	500 ul	\$285
<b>GDF-3</b>	GT15176	Goat IgG	M	IHC; WB; E	100 ug	\$365
<b>Glucagon</b>	MO15083	Rat IgG	H; M	IHC; FC	100 ug	\$215
<b>GLUT1</b>	RA25078	Rabbit IgG	B; H; M; Pr; R; Rb	ICC; IF; IHC; WB	100 ul	\$315

## FOR RESEARCH USE ONLY

NEUROMICS' REAGENTS ARE FOR IN VITRO AND CERTAIN NON-HUMAN IN VIVO EXPERIMENTAL USE ONLY AND NOT INTENDED FOR USE IN ANY HUMAN CLINICAL INVESTIGATION, DIAGNOSIS, PROGNOSIS, OR TREATMENT. THE ABOVE ANALYSES ARE MERELY TYPICAL GUIDES. THEY ARE NOT TO BE CONSTRUED AS BEING SPECIFICATIONS. ALL OF THE ABOVE INFORMATION IS, TO THE BEST OF OUR KNOWLEDGE, TRUE AND ACCURATE. HOWEVER, SINCE THE CONDITIONS OF USE ARE BEYOND OUR CONTROL, ALL RECOMMENDATIONS OR SUGGESTIONS ARE MADE WITHOUT GUARANTEE, EXPRESS OR IMPLIED, ON OUR PART. WE DISCLAIM ALL LIABILITY IN CONNECTION WITH THE USE OF THE INFORMATION CONTAINED HEREIN OR OTHERWISE, AND ALL SUCH RISKS ARE ASSUMED BY THE USER. WE FURTHER EXPRESSLY DISCLAIM ALL WARRANTIES OF MERCHANTABILITY AND FITNESS FOR A PARTICULAR PURPOSE.-V4-05/2013

[www.neuromics.com](http://www.neuromics.com)

Neuromics Antibodies • 5325 West 74<sup>th</sup> Street, Suite 8 • Edina, MN 55439  
phone 866-350-1500 • fax 612-677-3976 • e-mail [pshuster@neuromics.com](mailto:pshuster@neuromics.com)

Name	Catalog #	Type	Species	Applications	Size	Price
<b>Gpihpb1</b>	RA25016	Rabbit IgG	M; R	WB	100 ul	\$245
<b>HES-1</b>	GT15172	Goat IgG	H; M; R	IHC; WB; E	100 ug	\$365
<b>HMGA2</b>	RA30058	Goat IgG	H	IHC	50 ug	\$395
<b>HSP60 (D307)</b>	RA18029	Rabbit IgG	H; M; Pr; R	IF; IHC; WB; FC	100 ul	\$325
<b>HSP60 (D85)</b>	RA18030	Rabbit IgG	H; M; Pr; R	IF; IHC; WB; FC	100 ul	\$325
<b>IGF-I R</b>	MO15074	Mouse IgG	H	IHC; WB	500 ug 100 ug	\$325 \$155
<b>IL-1 R1</b>	GT15109	Goat IgG	M	IHC; WB; E	100 ug	\$365
<b>IL-1Alpha/IL-F1</b>	GT15101	Goat IgG	M	IHC; WB; E	100 ug	\$365
<b>IL-1Beta</b>	GT15102	Goat IgG	M	IHC; WB; E	100 ug	\$365
<b>IL-2</b>	MO15069	Mouse IgG	H	IHC	100 ug	\$155
<b>IL-2 (Rat)</b>	GT15155	Goat IgG	R	IHC; WB	100 ug	\$365
<b>IL-2 R alpha/CD35</b>	MO15070	Mouse IgG	H	IHC; WB	100 ug	\$155
<b>IL-4</b>	MO15071	Mouse IgG	H	IHC; WB; E	100 ug	\$155
<b>IL-6 (Mouse)</b>	GT15103	Goat IgG	M	E; NB	100 ug	\$365
<b>IL-6 (Rat)</b>	GT15106	Goat IgG	R	IHC; WB; E	100 ug	\$365
<b>Insulin</b>	RA20056	Rabbit IgG	R	IF; IHC	100 ul	\$235
<b>Insulysin/IDE</b>	GT15171	Goat IgG	H	WB; IP; E	100 ug	\$365
<b>Insulysin/IDE</b>	MO15081	Mouse IgG	H; M; Pr; R	WB; FC	100 ug	\$235
<b>LDL Receptor</b>	RA25068	Rabbit IgG	H; M	IHC; WB	100 ul	\$285
<b>LIF, human</b>	MO16101	Mouse IgG	H	WB	100 ug	\$399
<b>LIF, mouse</b>	MO16102	Mouse IgG	M	WB	100 ug	\$399
<b>LepRb/OBRb</b>	CH14104	Chicken IgY	R	IF; IHC	100 ul 100 ug Blocking Protein	\$275 \$95
<b>Leptin</b>	GT15011	Goat IgG	H; M; R	IHC; WB; E	100 ug	\$365
<b>Leptin (Human)</b>	MO15019	Mouse IgG	H	IHC; E	500 ug	\$325
<b>Leptin</b>	RA30011	Rabbit IgG	M	IHC; WB; E	50 ug	\$425
<b>Leptin Receptor</b>	GT15059	Goat IgG	H	IHC; WB; E	100 ug	\$365
<b>Leptin Receptor</b>	GT15012	Goat IgG	M; R	IHC; WB; E	100 ug	\$365
<b>Lipin 1 (LPIN1)</b>	RA25079	Rabbit IgG	H; M; R	IHC; WB	100 ul	\$315
<b>Malondialdehyde (MDA)</b>	GT19003	Goat IgG	H	WB	100 ul	\$295

## FOR RESEARCH USE ONLY

NEUROMICS' REAGENTS ARE FOR IN VITRO AND CERTAIN NON-HUMAN IN VIVO EXPERIMENTAL USE ONLY AND NOT INTENDED FOR USE IN ANY HUMAN CLINICAL INVESTIGATION, DIAGNOSIS, PROGNOSIS, OR TREATMENT. THE ABOVE ANALYSES ARE MERELY TYPICAL GUIDES. THEY ARE NOT TO BE CONSTRUED AS BEING SPECIFICATIONS. ALL OF THE ABOVE INFORMATION IS, TO THE BEST OF OUR KNOWLEDGE, TRUE AND ACCURATE. HOWEVER, SINCE THE CONDITIONS OF USE ARE BEYOND OUR CONTROL, ALL RECOMMENDATIONS OR SUGGESTIONS ARE MADE WITHOUT GUARANTEE, EXPRESS OR IMPLIED, ON OUR PART. WE DISCLAIM ALL LIABILITY IN CONNECTION WITH THE USE OF THE INFORMATION CONTAINED HEREIN OR OTHERWISE, AND ALL SUCH RISKS ARE ASSUMED BY THE USER. WE FURTHER EXPRESSLY DISCLAIM ALL WARRANTIES OF MERCHANTABILITY AND FITNESS FOR A PARTICULAR PURPOSE.-V4-05/2013

[www.neuromics.com](http://www.neuromics.com)

Neuromics Antibodies • 5325 West 74<sup>th</sup> Street, Suite 8 • Edina, MN 55439  
phone 866-350-1500 • fax 612-677-3976 • e-mail [pshuster@neuromics.com](mailto:pshuster@neuromics.com)

Name	Catalog #	Type	Species	Applications	Size	Price
<b>NPY Y1 Receptor</b>	RA24506	Rabbit IgG	H; M; R	ICC; IHC; WB	100 ul	\$395
<b>NPY Y2 Receptor</b>	RA14112	Rabbit IgG	M; R	IHC	50 ul 100 ul 100 ug Blocking Peptide	\$210 \$380 \$75
<b>NPY Y2 Receptor-C/N Teminus</b>	RA14136	Rabbit IgG	M; R	IHC	50 ul 100 ul	\$210 \$380
<b>NeuroD1</b>	GT15231	Goat IgG	H; M	ICC; WB	100 ug	\$365
<b>Neurotensin Receptor 1 (NTS1)</b>	CH14110	Chicken IgY	R	IHC	50 ul 100 ul 100 ug Blocking Peptide	\$190 \$345 \$95
<b>Neurotensin Receptor 1 (NTS1)</b>	GP14020	Guinea Pig IgG	R	ICC; IHC	50 ul 100 ul 100 ug Blocking Peptide	\$190 \$345 \$95
<b>Neurotensin Receptor 2 (NTS2)</b>	RA17100	Rabbit IgG	R	ICC; IHC	100 ul	\$315
<b>Neurotensin Receptor 3 (NTS3)/Sortilin</b>	GT15237	Goat IgG	H	IHC; WB; E; NB	100 ug	\$365
<b>Neurotensin Receptor 3 (NTS3)/Sortilin</b>	GT15238	Goat IgG	M	IHC; WB; E; NB	100 ug	\$365
<b>Neurotensin Receptor 3 (NTS3)/Sortilin</b>	GT15237	Goat IgG	H	IHC; WB; E; NB	100 ug	\$365
<b>Omi/HtrA2</b>	MO15078	Mouse IgG	H	IHC; WB	100 ug	\$255
<b>Orexin B</b>	MO15114	Mouse IgG	H; M	IHC	100 ug	\$325
<b>PDK1</b>	RA25059	Rabbit IgG	H	WB	100 ul	\$285
<b>PDX1/IPF1</b>	GT15187	Goat IgG	H	IHC; WB; E	100 ug	\$365
<b>Peripherin</b>	CH22111	Chicken IgY	Ca; H; M; R	IHC	100 ul	\$245
<b>Peripherin</b>	CH23016	Chicken IgY	H; M	IHC	100 ul	\$89
<b>PIGF</b>	RA26003	Rabbit IgG	R	IHC; WB	100 ul	\$375
<b>RAGE</b>	GT15030	Goat IgG	M	IHC; WB; E	100 ug	\$365
<b>RAGE</b>	MO15029	Rat IgG	M; R	IHC; WB; E	500 ug	\$325
<b>mRELM alpha</b>	RA19062	Rabbit IgG	H; M	WB	100 ul	\$175
<b>Renin Propeptide</b>	MO15101	Mouse IgG	H; Pr	IHC; WB; E	100 ug	\$255
<b>Resistin</b>	GT15031	Goat IgG	M	IHC; WB; E	100 ug	\$365
<b>Resistin</b>	RA19059	Rabbit IgG	H	WB	100 ul	\$175
<b>SHIP2</b>	RA18031	Rabbit IgG	H; R	IF; WB; FC; IP	100 ul	\$325

## FOR RESEARCH USE ONLY

NEUROMICS' REAGENTS ARE FOR IN VITRO AND CERTAIN NON-HUMAN IN VIVO EXPERIMENTAL USE ONLY AND NOT INTENDED FOR USE IN ANY HUMAN CLINICAL INVESTIGATION, DIAGNOSIS, PROGNOSIS, OR TREATMENT. THE ABOVE ANALYSES ARE MERELY TYPICAL GUIDES. THEY ARE NOT TO BE CONSTRUED AS BEING SPECIFICATIONS. ALL OF THE ABOVE INFORMATION IS, TO THE BEST OF OUR KNOWLEDGE, TRUE AND ACCURATE. HOWEVER, SINCE THE CONDITIONS OF USE ARE BEYOND OUR CONTROL, ALL RECOMMENDATIONS OR SUGGESTIONS ARE MADE WITHOUT GUARANTEE, EXPRESS OR IMPLIED, ON OUR PART. WE DISCLAIM ALL LIABILITY IN CONNECTION WITH THE USE OF THE INFORMATION CONTAINED HEREIN OR OTHERWISE, AND ALL SUCH RSKS ARE ASSUMED BY THE USER. WE FURTHER EXPRESSLY DISCLAIM ALL WARRANTIES OF MERCHANTABILITY AND FITNESS FOR A PARTICULAR PURPOSE.-V4-05/2013

[www.neuromics.com](http://www.neuromics.com)

Neuromics Antibodies • 5325 West 74<sup>th</sup> Street, Suite 8 • Edina, MN 55439  
phone 866-350-1500 • fax 612-677-3976 • e-mail [pshuster@neuromics.com](mailto:pshuster@neuromics.com)

Name	Catalog #	Type	Species	Applications	Size	Price
<b>Substance P-Pure</b>	GP14110	Guinea Pig IgG	H; M; R	IHC	100 ul 20 ug Blocking Peptide	\$350 \$95
<b>Substance P</b>	GP14103	Guinea Pig IgG	H; M; R	IHC	50 ul 150 ul 20 ug Blocking Peptide	\$175 \$395 \$95
<b>Substance P</b>	RA20064	Rabbit IgG	R	IHC	100 ul	\$240
<b>Substance P</b>	MO15094	Mouse IgG	H; M; R	IHC; E	100 ug 20 ug Blocking Peptide	\$255 \$95
<b>Survivin</b>	RA19022	Rabbit IgG	H; M; R	WB	100 ug	\$225
<b>TCF4 (C48H11)</b>	RA18032	Rabbit IgG	Ch; H; M; R	WB; IP	100 ul	\$325
<b>TCF4 (C9b9)</b>	RA18033	Rabbit IgG	H; M; R	IF; WB; IP	100 ul	\$325
<b>TNF alpha</b>	GT15064	Goat IgG	R	IHC; WB; E	100 ug	\$365
<b>TNF alpha</b>	GT15113	Goat IgG	M	ICC; IHC; WB; E	100 ug	\$365
<b>TRPM6 (Chak2)</b>	GP14108	Guinea Pig IgG	R	IHC	100 ul	\$295
<b>TrkB</b>	MO15025	Rat IgG	M	IHC; WB; E	500 ug	\$325
<b>TrkB</b>	GT15080	Goat IgG	M	IHC; WB; E	100 ug	\$365
<b>TrkB</b>	MO15042	Mouse IgG	H	WB; FC; E	500 ug	\$325
<b>Tuj 1 (Neuron-specific class III beta-tubulin)</b>	MO15013	Mouse IgG	H	ICC; IF; IHC; WB	100 ug	\$265
<b>Tuj 1 (Neuron-specific class III beta-tubulin)</b>	CH23005	Chicken IgY	H; M	ICC; IHC; WB	100 ul	\$99
<b>VEGF</b>	MO15067	Mouse IgG	H	IHC; WB; E	100 ug 500 ug	\$89 \$325
<b>VEGF R2 (FLK1/KDR)</b>	RA25011	Rabbit IgG	H; M; R	IHC; WB	100 ul	\$385
<b>VIP</b>	RA20071	Rabbit IgG	GP; M; Pr; R	IHC	100 ul	\$255

#### Diabetes and Obesity Research Recombinant Proteins

Name	Catalog #	Type	Species	Size	Price
<b>Agouti Related Protein</b>	PR15056-2	Protein	H; R	2 ug	\$99
<b>BDNF</b>	PR15020	Protein	H	5 ug 25 ug	\$220 \$660
<b>BDNF</b>	PR27080-2	Protein	H	2 ug 10 ug	\$75 \$175
<b>C-Reactive Protein</b>	PR27090-500	Protein	H	500 ug 1 mg	\$225 \$350

### FOR RESEARCH USE ONLY

NEUROMICS' REAGENTS ARE FOR IN VITRO AND CERTAIN NON-HUMAN IN VIVO EXPERIMENTAL USE ONLY AND NOT INTENDED FOR USE IN ANY HUMAN CLINICAL INVESTIGATION, DIAGNOSIS, PROGNOSIS, OR TREATMENT. THE ABOVE ANALYSES ARE MERELY TYPICAL GUIDES. THEY ARE NOT TO BE CONSTRUED AS BEING SPECIFICATIONS. ALL OF THE ABOVE INFORMATION IS, TO THE BEST OF OUR KNOWLEDGE, TRUE AND ACCURATE. HOWEVER, SINCE THE CONDITIONS OF USE ARE BEYOND OUR CONTROL, ALL RECOMMENDATIONS OR SUGGESTIONS ARE MADE WITHOUT GUARANTEE, EXPRESS OR IMPLIED, ON OUR PART. WE DISCLAIM ALL LIABILITY IN CONNECTION WITH THE USE OF THE INFORMATION CONTAINED HEREIN OR OTHERWISE, AND ALL SUCH RISKS ARE ASSUMED BY THE USER. WE FURTHER EXPRESSLY DISCLAIM ALL WARRANTIES OF MERCHANTABILITY AND FITNESS FOR A PARTICULAR PURPOSE.-V4-05/2013

[www.neuromics.com](http://www.neuromics.com)

Neuromics Antibodies • 5325 West 74<sup>th</sup> Street, Suite 8 • Edina, MN 55439  
phone 866-350-1500 • fax 612-677-3976 • e-mail [pshuster@neuromics.com](mailto:pshuster@neuromics.com)

Name	Catalog #	Type	Species	Size	Price
<b>CNTF</b>	PR27005-5	Protein	H	5 ug 20 ug	\$75 \$175
<b>CXCL7/NAP-2</b>	PR27118-2	Protein	H	2 ug 10 ug	\$75 \$175
<b>IGF-I, CF</b>	PR15022CF	Protein	H	50 ug 250 ug	\$170 \$545
<b>IGF-I, CF</b>	PR15023CF	Protein	M	50 ug	\$175
<b>IGF-II</b>	PR15045CF	Protein	M	50 ug	\$175
<b>IGFBP-3, CF</b>	PR15046CF	Protein	M	25 ug	\$315
<b>IGFBP-4, CF</b>	PR15047CF	Protein	H	25 ug	\$315
<b>IL-17</b>	PR27113-5	Protein	H	5 ug 25 ug	\$75 \$175
<b>IL-6</b>	PR27107-5	Protein	H	5 ug 20 ug	\$75 \$175
<b>IL-6, His Tagged</b>	PR27108-10	Protein	H	10 ug 50 ug	\$75 \$175
<b>Insulin-Pig</b>	PR27096-25	Protein	P	25 mg 250mg	\$110 \$355
<b>pro-Insulin</b>	PR15081-50	Protein	H; R	50 ug	\$325
<b>Leptin His Tag-Human</b>	PR27098-5	Protein	H	5 ug 25 ug	\$75 \$185
<b>Leptin qA-Human</b>	PR27103-20	Protein	H	20 ug 100 ug	\$75 \$185
<b>Leptin tA-Human</b>	PR2102-20	Protein	H	200 ug 1 mg	\$75 \$185
<b>Leptin-Chicken</b>	PR27101-100	Protein	Ch; H; M; P	100 ug 200 ug	\$365 \$490
<b>Leptin-Human</b>	PR27097-200	Protein	H	200 ug 1 mg	\$75 \$185
<b>Leptin-Mouse</b>	PR27099-200	Protein	M	200 ug 1 mg	\$75 \$185
<b>Leptin-Pig</b>	PR27137-100	Protein	P	100 ug 200 ug	\$235 \$355
<b>Leptin-Rat</b>	PR27100-100	Protein	R	100 ug 200 ug	\$235 \$355
<b>Leukemia Inhibitory Factor (LIF), human</b>	PR16101	Protein	H	5 ug 10 ug	\$295 \$435
<b>Leukemia Inhibitory Factor (LIF), mouse</b>	PR16102	Protein	M	5 ug 10 ug	\$295 \$435

## FOR RESEARCH USE ONLY

NEUROMICS' REAGENTS ARE FOR IN VITRO AND CERTAIN NON-HUMAN IN VIVO EXPERIMENTAL USE ONLY AND NOT INTENDED FOR USE IN ANY HUMAN CLINICAL INVESTIGATION, DIAGNOSIS, PROGNOSIS, OR TREATMENT. THE ABOVE ANALYSES ARE MERELY TYPICAL GUIDES. THEY ARE NOT TO BE CONSTRUED AS BEING SPECIFICATIONS. ALL OF THE ABOVE INFORMATION IS, TO THE BEST OF OUR KNOWLEDGE, TRUE AND ACCURATE. HOWEVER, SINCE THE CONDITIONS OF USE ARE BEYOND OUR CONTROL, ALL RECOMMENDATIONS OR SUGGESTIONS ARE MADE WITHOUT GUARANTEE, EXPRESS OR IMPLIED, ON OUR PART. WE DISCLAIM ALL LIABILITY IN CONNECTION WITH THE USE OF THE INFORMATION CONTAINED HEREIN OR OTHERWISE, AND ALL SUCH RISKS ARE ASSUMED BY THE USER. WE FURTHER EXPRESSLY DISCLAIM ALL WARRANTIES OF MERCHANTABILITY AND FITNESS FOR A PARTICULAR PURPOSE.-V4-05/2013

[www.neuromics.com](http://www.neuromics.com)

Neuromics Antibodies • 5325 West 74<sup>th</sup> Street, Suite 8 • Edina, MN 55439  
phone 866-350-1500 • fax 612-677-3976 • e-mail [pshuster@neuromics.com](mailto:pshuster@neuromics.com)

Name	Catalog #	Type	Species	Size	Price
<b>Neurotensin Receptor 3 (NTS3)/Sortilin, Carrier Free</b>	PR15080CF-50	Protein	H; R	50 ug	\$315
<b>TNF-alpha</b>	PR27146-10	Protein	H	10 ug 50 ug	\$85 \$185
<b>TrkB</b>	PR15052-50	Protein	H	50 ug	\$325
<b>TrkB, Carrier Free</b>	PR15052CF-50	Protein	H	50 ug	\$325
<b>VEGF</b>	PR15028	Protein	C	10 ug	\$315
<b>VEGF, CF</b>	PR15028CF	Protein	C	10 ug	\$315
<b>VEGF 120</b>	PR15033	Protein	M	25 ug 5 ug	\$825 \$255
<b>VEGF 121</b>	PR15029	Protein	H	25 ug 5 ug	\$905 \$280
<b>VEGF 121, CF</b>	PR15029CF	Protein	H	5 ug 25 ug	\$280 \$905
<b>VEGF 162</b>	PR15030	Protein	H	25 ug	\$315
<b>VEGF 162, CF</b>	PR15030CF	Protein	H	25 ug	\$315
<b>VEGF 164</b>	PR15034	Protein	M	25 ug 5 ug	\$825 \$255
<b>VEGF 164</b>	PR15035	Protein	R	10 ug 50 ug	\$315 \$905
<b>VEGF 164, CF</b>	PR15034CF	Protein	M	5 ug 25 ug	\$255 \$825
<b>VEGF 164, CF</b>	PR15035CF	Protein	R	50 ug 10 ug	\$905 \$315
<b>VEGF 165</b>	PR15031	Protein	H	10 ug 50 ug	\$280 \$905
<b>VEGF 165, CF</b>	PR15031CF	Protein	H	50 ug 10 ug	\$905 \$280
<b>VEGF/PIGF Heterodimer</b>	PR15032	Protein	H	5 ug	\$315
<b>VEGF/PIGF Heterodimer, CF</b>	PR15032CF	Protein	H	5 ug	\$315
<b>Visfatin (PBEF), His Tagged</b>	PR27140-5	Protein	H	5 ug 25 ug	\$85 \$175
<b>Zinc-alpha 2 glycoprotein (ZAG2)</b>	PR27149-5	Protein	H	5 ug 10 ug	\$85 \$175

## FOR RESEARCH USE ONLY

NEUROMICS' REAGENTS ARE FOR IN VITRO AND CERTAIN NON-HUMAN IN VIVO EXPERIMENTAL USE ONLY AND NOT INTENDED FOR USE IN ANY HUMAN CLINICAL INVESTIGATION, DIAGNOSIS, PROGNOSIS, OR TREATMENT. THE ABOVE ANALYSES ARE MERELY TYPICAL GUIDES. THEY ARE NOT TO BE CONSTRUED AS BEING SPECIFICATIONS. ALL OF THE ABOVE INFORMATION IS, TO THE BEST OF OUR KNOWLEDGE, TRUE AND ACCURATE. HOWEVER, SINCE THE CONDITIONS OF USE ARE BEYOND OUR CONTROL, ALL RECOMMENDATIONS OR SUGGESTIONS ARE MADE WITHOUT GUARANTEE, EXPRESS OR IMPLIED, ON OUR PART. WE DISCLAIM ALL LIABILITY IN CONNECTION WITH THE USE OF THE INFORMATION CONTAINED HEREIN OR OTHERWISE, AND ALL SUCH RSKS ARE ASSUMED BY THE USER. WE FURTHER EXPRESSLY DISCLAIM ALL WARRANTIES OF MERCHANTABILITY AND FITNESS FOR A PARTICULAR PURPOSE.-V4-05/2013

[www.neuromics.com](http://www.neuromics.com)

Neuromics Antibodies • 5325 West 74<sup>th</sup> Street, Suite 8 • Edina, MN 55439  
phone 866-350-1500 • fax 612-677-3976 • e-mail [pshuster@neuromics.com](mailto:pshuster@neuromics.com)