



Catalog Number: RA19031

Host: Rabbit

Product Type: Affinity Purified Antibody

Species: Human

Immunogen Sequence: Reacts with residues 532-550 [DTNSLQNGDKLQKRPEKRQ] of human NABC1. NABC1 is a 60 kDa protein; however it forms dimers, which are easily detected in MCF-7 cells.

Reactivity:

Format: Liquid. 100 ug in 100 ul (1 mg/ml) in PBS containing 0.02% sodium azide

Applications: **Western Blot:** 1:100-300

Dilutions listed as a recommendation. Optimal dilution should be determined by investigator.

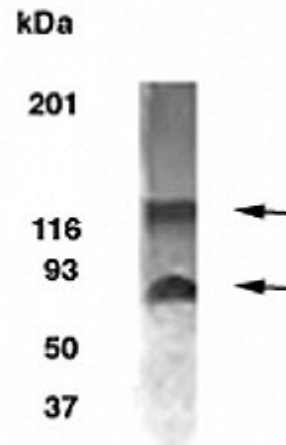
Storage: Maintain at +2-8°C for 3 months or at -20°C for longer periods. Stable for 1 year. Avoid repeated freeze-thaw cycles.

Application Notes

Description/Data:

A novel gene, Novel Amplified in Breast Cancer-1 (NABC1) is implicated in breast cancer development. Breast tumor lines that harbor amplification of the cancer-related amplicon 20q13.2 display high levels of the NABC1 protein compared to normal human fibroblasts or a breast cancer line that does not overexpress the NABC1 mRNA.

Image: Western Blot detection of NABC1 from 15 ug. MCF-7 cell lysates. Please note protein is detected at 60 kDa. A band at approximately 120 kDa is due to dimerization.



FOR RESEARCH USE ONLY

NEUROMICS' REAGENTS ARE FOR IN VITRO AND CERTAIN NON-HUMAN IN VIVO EXPERIMENTAL USE ONLY AND NOT INTENDED FOR USE IN ANY HUMAN CLINICAL INVESTIGATION, DIAGNOSIS, PROGNOSIS, OR TREATMENT. THE ABOVE ANALYSES ARE MERELY TYPICAL GUIDES. THEY ARE NOT TO BE CONSTRUED AS BEING SPECIFICATIONS. ALL OF THE ABOVE INFORMATION IS, TO THE BEST OF OUR KNOWLEDGE, TRUE AND ACCURATE. HOWEVER, SINCE THE CONDITIONS OF USE ARE BEYOND OUR CONTROL, ALL RECOMMENDATIONS OR SUGGESTIONS ARE MADE WITHOUT GUARANTEE, EXPRESS OR IMPLIED, ON OUR PART. WE DISCLAIM ALL LIABILITY IN CONNECTION WITH THE USE OF THE INFORMATION CONTAINED HEREIN OR OTHERWISE, AND ALL SUCH RISKS ARE ASSUMED BY THE USER. WE FURTHER EXPRESSLY DISCLAIM ALL WARRANTIES OF MERCHANTABILITY AND FITNESS FOR A PARTICULAR PURPOSE.-V3/08/2012