



## High-mobility group protein B1(HMGP1) Data Sheet

---

<b>Catalog Number:</b> MO22134	<b>Host:</b> Mouse
<b>Product Type:</b> Affinity Purified <b>Clone:</b> IgG2b	<b>Species Reactivity:</b> Human, Cow, Pig, Mouse, Rat and other mammals
<b>Immunogen Sequence:</b> Full length recombinant human HMGB1 protein	<b>Format:</b> 100ul Liquid 1.0 mg/ml
<b>Applications:</b> <b>Immunofluorescence:</b> 1:1,000 or higher <b>Western blot:</b> 1:1,000-2,000	
<b>Storage:</b>	Dilution listed only as recommendations. Optimal dilutions should be determined by end user. Antibody can also be aliquotted and stored frozen at -20° C to -70° C in a manual defrost freezer for six months without detectable loss of activity. The antibody can be stored at 2° - 8° C for 1 month without detectable loss of activity. <i>Avoid repeated freeze-thaw cycles.</i>

---

### Application Notes

#### Immunostaining Cell Cultures

1. Draw of culture medium with aspirator and add 1 ml of 3.7 % formalin in PBS solution to the dish. (make up from 10mls Fisher 37% formalin plus 90mls PBS, the Fisher formalin contains 37% formaldehyde plus about 1% methanol which may be relevant sometimes). Let sit at room temp for 1 minute. (can add 0.1% Tween 20 to PBS used here and all subsequent steps to reduce background; probably best not to do this first time round though as it may extract your antigen or help wash your cells off the dish).
2. Take off the formalin/PBS and add 1ml of cold methanol (-20°C, kept in well sealed bottle in fridge). Let sit for no more than 1 minute.
3. Take off methanol and add 1ml of PBS, not letting the specimen dry out. To block nonspecific antibody binding can add ~10ml (=1%) of goat serum (Sigma), and can incubate for 30 minutes. Can then add antibody reagents. Typically 100ml of hybridoma tissue culture supernatant or 1ml of mouse ascites fluid, affinity purified or crude serum. Incubate for 1 hour at room temp. (or can go at 37°C for 30 minutes to 1 hour, or can do 4°C overnight, exact time not too critical). Can do very gentle shaking for well adherent cell lines (3T3, Hek293 etc.).
4. Remove primary antibody and replace with 1 ml of PBS. Let sit for 5-10 minutes, replace PBS and repeat twice, to give three washes in PBS.
5. Add 0.5 mls of secondary antibody. These are fluorescently labeled Goat anti mouse or rabbit antibodies and are conjugated to ALEXA dyes and are from Molecular probes (Eugene Oregon, the ALEXA dyes are sulphonated rhodamine compounds and are much more stable to UV than FITC, TRITC, Texas red etc.). Typically make 1:2,000 dilutions of these secondaries in PBS plus 1% goat serum, BSA or non fat milk carrier. Incubate for 1 hour at room temp. (or can go at 37°C for 30 minutes to 1 hour, or can do 4°C overnight). Can do gentle shaking for well adherent cell lines (3T3, HEK293 etc.).
6. Remove secondary antibody and replace with 1 ml of PBS. Let sit for 5-10 minutes, replace PBS and repeat twice, to give three washes in PBS.
7. Drop on one drop of Fisher mounting medium onto dish and apply 22mm square coverslip. View in the microscope!

#### Western Blotting

1. Run gel as usual. Take gel out of electrophoresis apparatus. Cut into segments as required; Part of gel can be stained directly in Coomassie brilliant blue R-250 (2.5 g Coomassie Brilliant Blue R-250, 450 mls methanol, 100 mls glacial acetic acid, water to 1 liter). Part to be used for electroblotting is put into tap water on shaker, after first having marked it unambiguously to identify top/bottom, left and right etc.
2. Leave in water on shaker for 5 minutes. This step can be substituted by washing the gel in electro-transfer buffer (see below) for 5 minutes.
3. We use a semidry blotter, which we have found to be quicker, more economical and easier than fully submerged blotting methods. We cut Whatman 3M filter papers to the size of our gels, and place three of these onto the semi dry blotter. These are then wet with transfer buffer (we routinely use 3.03 g Tris base, 14.4 g Glycine, 10% Methanol per liter). The gel is put onto the filters and a prewetted nitrocellulose filter is put on top of the gel. Alternately put a PVDF membrane on top; if you

### FOR RESEARCH USE ONLY

NEUROMICS' REAGENTS ARE FOR IN VITRO AND CERTAIN NON-HUMAN IN VIVO EXPERIMENTAL USE ONLY AND NOT INTENDED FOR USE IN ANY HUMAN CLINICAL INVESTIGATION, DIAGNOSIS, PROGNOSIS, OR TREATMENT. THE ABOVE ANALYSES ARE MERELY TYPICAL GUIDES. THEY ARE NOT TO BE CONSTRUED AS BEING SPECIFICATIONS. ALL OF THE ABOVE INFORMATION IS, TO THE BEST OF OUR KNOWLEDGE, TRUE AND ACCURATE. HOWEVER, SINCE THE CONDITIONS OF USE ARE BEYOND OUR CONTROL, ALL RECOMMENDATIONS OR SUGGESTIONS ARE MADE WITHOUT GUARANTEE, EXPRESS OR IMPLIED, ON OUR PART. WE DISCLAIM ALL LIABILITY IN CONNECTION WITH THE USE OF THE INFORMATION CONTAINED HEREIN OR OTHERWISE, AND ALL SUCH RISKS ARE ASSUMED BY THE USER. WE FURTHER EXPRESSLY DISCLAIM ALL WARRANTIES OF MERCHANTABILITY AND FITNESS FOR A PARTICULAR PURPOSE. V1-05/2013

[www.neuromics.com](http://www.neuromics.com)

are using PVDF remember it is essential to prewet the PVDF in 100% methanol. Great care should be taken to ensure that no air bubbles are anywhere in this stack of membranes. Then three more wetted Whatman 3M filters should be placed on top of the pile, again taking great care not to have any bubbles in pile. Put the top onto the apparatus and screw it down. Proteins in transfer buffer are negative in charge mostly due to residual SDS and they therefore move from -ve to +ve pole. So the +ve electrode is above the nitrocellulose and the -ve side is below the gel.

4. Run for 30 minutes to 1 hour at ~100mA. The most reliable way of doing this is to use a powerful power supply 200-500mA and put it on constant voltage, with a setting of 5 to 10 Volts. Low molecular weight proteins (20kDa or less) will transfer in 30 minutes at 5 Volts, while higher molecular weight (150kDa or more) transfer in 60 minutes at 10 Volts.

5. After running disassemble the apparatus and remove nitrocellulose filter. Stain this for 5 minutes on shaker in Ponceau reagent (0.25% Ponceau S in 40% methanol and 15% acetic acid). Destain with regular SDS-PAGE gel destain solution (7.5% methanol, 10% acetic acid). If you transferred efficiently, the proteins can be seen as pale pink bands. This tells you whether the transfer was O.K. or not and also exactly where the bands are. You can photograph, photocopy or mark the position of the bands directly with a pencil. If you can't see any bands at this stage, it's probably smart to try to optimize steps 3 and 4. The gel may be discarded or may be stained as usual in coomassie, to see how much protein is left behind.

6. After Ponceau staining put the nitrocellulose filter into blocking solution, such as 1% bovine serum albumin (BSA) or 1% Carnation non fat milk (NFM), for 20 minutes to 1 hr at RT or 37°C. Since the NFM works just as well as BSA but is much cheaper, there is really no good reason to use BSA. Ponceau staining will fade to become completely invisible. Carry on with antibody incubations etc.

#### *Antibody Incubations:*

1. Put in antibody solutions. Volume should be enough to cover blot and allow it to float freely when you agitate. In initial experiments, antibody concentration should generally be about 1:100 - 1:1,000 for ascites, CL350 tissue culture supernatant or antiserum, undiluted to 1:10 for monoclonal supernatant, and about 1-10µg/ml for a pure IgG. If dilution brings antibody concentration to less than 50 µg/ml, add some BSA or NFM to act as carrier protein (e.g. make BSA or NFM concentration 1mg/ml). Incubate for at least 1 hour with shaking (can be room temperature or at 37°C, can also do overnight at 4°C).

2. Wash membranes in TBS (10mM Tris, 154mM NaCl, pH=7.5 plus 0.1% Tween 20) for 3 times at least five minutes each time with extensive agitation.

3. Incubate in second antibody (peroxidase-conjugate, phosphatase conjugate or radioactive). Add BSA or NFM carrier as before if necessary. Incubate for at least one hour at room temperature or 37°C can also do overnight at 4°C with shaking as before.

4. Wash membranes in TBS (10mM Tris, 154mM NaCl, pH=7.5 plus 0.1% Tween 20) for 3 times at least five minutes each time with extensive agitation.

#### *A. Alkaline Phosphatase Blot System*

1. Incubate in alkaline phosphatase conjugated antibody against the primary antibody (e.g. Goat anti-mouse, rabbit or chicken; buy from Sigma or some other trusted source). Typical concentration is 1:1,000 in TBS (10mM Tris/HCl, 154mM NaCl, pH=7.5). Add a small amount of BSA or NFM to act as carrier. Incubate for 1 hour at room temperature (or 37°C) with shaking.

2. Wash in TBS three times 5 minutes each. (N.B. the alkaline phosphatase enzyme is inhibited by EDTA, which chelates zinc and magnesium, and by phosphate, which inhibits forward reaction. Make sure therefore you use TBS which is EDTA and phosphate free- Don't make up developer in PBS!)

3. Put into developer. Buffer is 100mM Tris/HCl, 100mM NaCl, 5mM MgCl<sub>2</sub> pH=9.5. To 10ml of this add 33µl BCIP-T (5-bromo-4-chloro-3-indolyl phosphate, p-toluidine salt, make up 50mg/ml in water or Dimethyl formamide; in water makes a yellow suspension) and 33µl of NBT (Nitro Blue Tetrazolium, also 50mg/ml in water). Can store these solutions at -20°C. Can buy this solution made up already from Sigma. Reaction product is purple, and appears in a few minutes; can incubate for up to an hour if the signal is weak. Watch development of reaction and stop with water. Some of background disappears on drying.

#### *B. Horse Radish Peroxidase Staining*

After washing of blots in TBS or PBS (must not have azide in wash buffer! This inhibits the peroxidase enzyme) add reaction mixture. This is; 20 mls 0.1M Tris/HCl pH=7.2 (Vecta stain buffer). 200 µl NiCl (80 mg/ml), 6 µl 30% hydrogen peroxide, 1ml of 5mgs/ml diaminobenzidine. (Wear gloves, DAB is carcinogenic). Alternate protocol; Make 20 mls ammonium acetate buffer (50mM, pH=5.0). Add 1 ml of 10mg/ml Diaminobenzidine, 40µl 30% hydrogen peroxide. Brown reaction product is seen in 1-10 minutes, not quite so nice as above method.

#### *C. Chemiluminescence Staining*

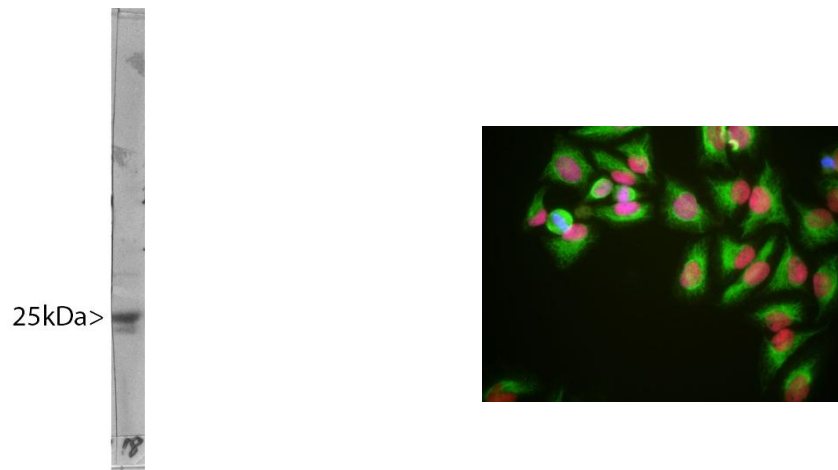
Chemiluminescence has an advantage of perhaps an order of magnitude greater sensitivity than the dye based methods above. In addition, several films may be exposed from a single blot, giving an advantage in interpretation of weak and strong signals on the same membrane. However it requires a darkroom to perform and is more expensive in reagents. Reagents are generally bought in a kit, and we recommend simply following the kit instructions

## **FOR RESEARCH USE ONLY**

NEUROMICS' REAGENTS ARE FOR IN VITRO AND CERTAIN NON-HUMAN IN VIVO EXPERIMENTAL USE ONLY AND NOT INTENDED FOR USE IN ANY HUMAN CLINICAL INVESTIGATION, DIAGNOSIS, PROGNOSIS, OR TREATMENT. THE ABOVE ANALYSES ARE MERELY TYPICAL GUIDES. THEY ARE NOT TO BE CONSTRUED AS BEING SPECIFICATIONS. ALL OF THE ABOVE INFORMATION IS, TO THE BEST OF OUR KNOWLEDGE, TRUE AND ACCURATE. HOWEVER, SINCE THE CONDITIONS OF USE ARE BEYOND OUR CONTROL, ALL RECOMMENDATIONS OR SUGGESTIONS ARE MADE WITHOUT GUARANTEE, EXPRESS OR IMPLIED, ON OUR PART. WE DISCLAIM ALL LIABILITY IN CONNECTION WITH THE USE OF THE INFORMATION CONTAINED HEREIN OR OTHERWISE, AND ALL SUCH RISKS ARE ASSUMED BY THE USER. WE FURTHER EXPRESSLY DISCLAIM ALL WARRANTIES OF MERCHANTABILITY AND FITNESS FOR A PARTICULAR PURPOSE. V1-05/2013

[www.neuromics.com](http://www.neuromics.com)

Neuromics Antibodies • 5325 West 74<sup>th</sup> Street, Suite 8 • Edina, MN 55439  
phone 866-350-1500 • fax 612-677-3976 • e-mail [pshuster@neuromics.com](mailto:pshuster@neuromics.com)



**Left:** Blot of crude HeLa cell extract. HMGB1 runs at an apparent molecular weight of 25kDa. **Right:** HeLa cells grown in tissue culture and stained with HMGB1 (red), Neuromics' chicken polyclonal antibody to Vimentin (Cat#CH22108) (green) and DNA (blue). The HMGB1 antibody reveals strong nuclear staining which overlaps with the DNA stain.

***FOR RESEARCH USE ONLY***

NEUROMICS' REAGENTS ARE FOR IN VITRO AND CERTAIN NON-HUMAN IN VIVO EXPERIMENTAL USE ONLY AND NOT INTENDED FOR USE IN ANY HUMAN CLINICAL INVESTIGATION, DIAGNOSIS, PROGNOSIS, OR TREATMENT. THE ABOVE ANALYSES ARE MERELY TYPICAL GUIDES. THEY ARE NOT TO BE CONSTRUED AS BEING SPECIFICATIONS. ALL OF THE ABOVE INFORMATION IS, TO THE BEST OF OUR KNOWLEDGE, TRUE AND ACCURATE. HOWEVER, SINCE THE CONDITIONS OF USE ARE BEYOND OUR CONTROL, ALL RECOMMENDATIONS OR SUGGESTIONS ARE MADE WITHOUT GUARANTEE, EXPRESS OR IMPLIED, ON OUR PART. WE DISCLAIM ALL LIABILITY IN CONNECTION WITH THE USE OF THE INFORMATION CONTAINED HEREIN OR OTHERWISE, AND ALL SUCH RISKS ARE ASSUMED BY THE USER. WE FURTHER EXPRESSLY DISCLAIM ALL WARRANTIES OF MERCHANTABILITY AND FITNESS FOR A PARTICULAR PURPOSE. V1-05/2013

**[www.neuromics.com](http://www.neuromics.com)**

Neuromics Antibodies • 5325 West 74<sup>th</sup> Street, Suite 8 • Edina, MN 55439  
phone 866-350-1500 • fax 612-677-3976 • e-mail [pshuster@neuromics.com](mailto:pshuster@neuromics.com)