



**Catalog Number:** MO22140

**Product Type:** Mouse Monoclonal IgG2a Affinity Purified

**Immunogen Sequence:** Antibody was raised in mouse against recombinant full length His tagged mCherry purified from *E. coli*.

**Applications:** Immunofluorescence: 1:500  
Immunohistochemistry: 1:500  
Immunocytochemistry: 1:500  
Western Blot: 1:2,000

Dilutions listed as a recommendation. Optimal dilution should be determined by investigator.

**Storage:** Antibody can also be aliquotted and stored frozen at -20° C to -70° C in a manual defrost freezer for six months without detectable loss of activity. The antibody can be stored at 2° - 8° C for 1 month without detectable loss of activity. Avoid repeated freeze-thaw cycles.

**Host:** Mouse

**Species Reactivity:** All mammalian

**Format:** Liquid with 10mM sodium azide  
Concentration: 1mg/ml.

### Application Notes

#### Description/Data:

Image: HEK293 cells transfected with mCherry and visualized in red. The cells were stained with MO22140 in the green channel, and visualized using a confocal microscope. Transfected cells are yellow, showing overlap of the mCherry and the MO22140 antibody. Untransfected HEK293 cells do not express Cherry and do not stain with the antibody, but their nuclei can be visualized using a DNA stain (blue). Blot and transfected cells courtesy of the Semple-Rowland lab at the University of Florida.

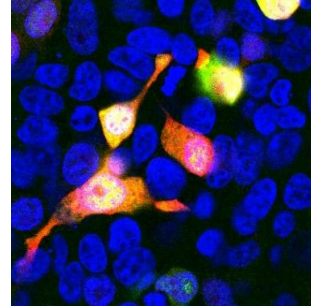
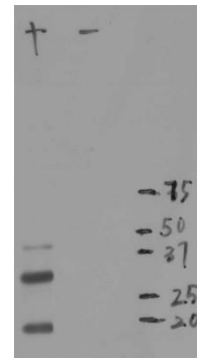


Image: Blot of crude extract of HEK293 cells transfected with pFin-EF1-mCherry vector in lane labelled "+". The "-" lane is a blot of an equal amount of protein extract from untransfected HEK293 cells. MCA-1C51 binds a major band running at ~28 kDa corresponding to intact full-length mCherry. The two other bands are clearly processed forms of mCherry as they are not present in non-transfected HEK293 cells



**FOR RESEARCH USE ONLY**

NEUROMICS' REAGENTS ARE FOR IN VITRO AND CERTAIN NON-HUMAN IN VIVO EXPERIMENTAL USE ONLY AND NOT INTENDED FOR USE IN ANY HUMAN CLINICAL INVESTIGATION, DIAGNOSIS, PROGNOSIS, OR TREATMENT. THE ABOVE ANALYSES ARE MERELY TYPICAL GUIDES. THEY ARE NOT TO BE CONSTRUED AS BEING SPECIFICATIONS. ALL OF THE ABOVE INFORMATION IS, TO THE BEST OF OUR KNOWLEDGE, TRUE AND ACCURATE. HOWEVER, SINCE THE CONDITIONS OF USE ARE BEYOND OUR CONTROL, ALL RECOMMENDATIONS OR SUGGESTIONS ARE MADE WITHOUT GUARANTEE, EXPRESS OR IMPLIED, ON OUR PART. WE DISCLAIM ALL LIABILITY IN CONNECTION WITH THE USE OF THE INFORMATION CONTAINED HEREIN OR OTHERWISE, AND ALL SUCH RISKS ARE ASSUMED BY THE USER. WE FURTHER EXPRESSLY DISCLAIM ALL WARRANTIES OF MERCHANTABILITY AND FITNESS FOR A PARTICULAR PURPOSE.-V2/08/2012