



Catalog Number:	MO22126	Host:	Mouse
Product Type:	Purified Mouse Monoclonal IgG ₁ .	Species Reactivity:	Human, Rat, Mouse
Immunogen Sequence:	Purified, E. coli-derived, recombinant human 14-3-3 eta protein	Format:	100 ul. Liquid at a concentration of 1 mg/ml.
Applications:	Immunofluorescence: 1:500-1:1,000 Western Blot: 1:1,000-1:5,000 (A suitable control tissue is rat spinal cord or peripheral nerve homogenate).		
Storage:	Dilutions listed as a recommendation. Optimal dilution should be determined by investigator. Antibody can also be aliquotted and stored frozen at -20° C to -70° C in a manual defrost freezer for six months without detectable loss of activity. The antibody can be stored at 2° - 8° C for 1 month without detectable loss of activity. Avoid repeated freeze-thaw cycles.		

Application Notes.

Immunostaining Cell Cultures

1. Draw of culture medium with aspirator and add 1 ml of 3.7 % formalin in PBS solution to the dish. (make up from 10mls Fisher 37% formalin plus 90mls PBS, the Fisher formalin contains 37% formaldehyde plus about 1% methanol which may be relevant sometimes). Let sit at room temp for 1 minute. (can add 0.1% Tween 20 to PBS used here and all subsequent steps to reduce background; probably best not to do this first time round though as it may extract your antigen or help wash your cells off the dish).
2. Take off the formalin/PBS and add 1ml of cold methanol (-20°C, kept in well sealed bottle in fridge). Let sit for no more than 1 minute.
3. Take off methanol and add 1ml of PBS, not letting the specimen dry out. To block nonspecific antibody binding can add ~10ml (=1%) of goat serum (Sigma), and can incubate for 30 minutes. Can then add antibody reagents. Typically 100ml of hybridoma tissue culture supernatant or 1ml of mouse ascites fluid or crude serum. Incubate for 1 hour at room temp. (or can go at 37°C for 30 minutes to 1 hour, or can do 4°C overnight, exact time not too critical). Can do very gentle shaking for well adherent cell lines (3T3, Hek293 etc.).
4. Remove primary antibody and replace with 1 ml of PBS. Let sit for 5-10 minutes, replace PBS and repeat twice, to give three washes in PBS.
5. Add 0.5 mls of secondary antibody. These are fluorescently labeled Goat anti mouse antibodies and are conjugated to ALEXA dyes and are from Molecular probes (Eugene Oregon, the ALEXA dyes are sulphonated rhodamine compounds and are much more stable to UV than FITC, TRITC, Texas red etc.). Typically make 1:2,000 dilutions of these secondaries in PBS plus 1% goat serum, BSA or non fat milk carrier. Incubate for 1 hour at room temp. (or can go at 37°C for 30 minutes to 1 hour, or can do 4°C overnight). Can do gentle shaking for well adherent cell lines (3T3, HEK293 etc.).
6. Remove secondary antibody and replace with 1 ml of PBS. Let sit for 5-10 minutes, replace PBS and repeat twice, to give three washes in PBS.
7. Drop on one drop of Fisher mounting medium onto dish and apply 22mm square coverslip. View in the microscope!

Immunostaining Tissue

Solutions

PBS - sodium phosphate-buffered (100 mM; pH 7.2) isotonic (0.9% NaCl, w/v) saline Antibody dilution buffer (PBS with 0.1% non-ionic detergent, such as Triton X-100 or Tween-20) fluorescein anti-fading reagent -- Make up a 2 mg/ml phenylene diamine solution in PBS (phenylene diamine requires extensive vortexing to put it into solution). Once the

FOR RESEARCH USE ONLY

NEUROMICS' REAGENTS ARE FOR IN VITRO AND CERTAIN NON-HUMAN IN VIVO EXPERIMENTAL USE ONLY AND NOT INTENDED FOR USE IN ANY HUMAN CLINICAL INVESTIGATION, DIAGNOSIS, PROGNOSIS, OR TREATMENT. THE ABOVE ANALYSES ARE MERELY TYPICAL GUIDES. THEY ARE NOT TO BE CONSTRUED AS BEING SPECIFICATIONS. ALL OF THE ABOVE INFORMATION IS, TO THE BEST OF OUR KNOWLEDGE, TRUE AND ACCURATE. HOWEVER, SINCE THE CONDITIONS OF USE ARE BEYOND OUR CONTROL, ALL RECOMMENDATIONS OR SUGGESTIONS ARE MADE WITHOUT GUARANTEE, EXPRESS OR IMPLIED, ON OUR PART. WE DISCLAIM ALL LIABILITY IN CONNECTION WITH THE USE OF THE INFORMATION CONTAINED HEREIN OR OTHERWISE, AND ALL SUCH RISKS ARE ASSUMED BY THE USER. WE FURTHER EXPRESSLY DISCLAIM ALL WARRANTIES OF MERCHANTABILITY AND FITNESS FOR A PARTICULAR PURPOSE. V1-05/2012

www.neuromics.com

phenylene diamine is completely dissolved, add an equal volume of glycerol and mix. This reagent will last about a week at -20°C. Discard this reagent when it starts to turn dark brown.

Other Reagents

Fluorescein-labeled goat anti-mouse IgG.

1. Prepare your tissue sections or cultured cells as you normally would. Wash your sections or cells for 1 min with PBS at room temperature.
2. Incubate your sections or cells with your chicken primary antibodies (diluted in "antibody dilution buffer") for at least 1 hour at room temperature. The concentration of your antibody may be anywhere from 1:50-1:150 depending on the titre of the antibody and the concentration of your antigen.
3. Wash your sections or cells over a 10 minute period at room temperature (with two changes of PBS).
4. Incubate your sections or cells with fluorescein-labeled goat anti-mouse IgG (1:500 dilution in "antibody dilution buffer" for 1 hour at room temperature. Be sure to keep these slides or culture dishes in subdued light (e.g., in a drawer) to avoid bleaching of the fluorescein dye.
5. Repeat step #4
6. Add a drop of "fluorescence anti-fading reagent" (**i-BRITE Plus**) to your sections or cells. Place a coverslip over the section. If you want to reduce messiness, you may also seal the coverslip by painting the edges with nail polish.
7. Store the slides or culture dishes in the refrigerator (in the dark).

Western Blotting

1. Run gel as usual. Take gel out of electrophoresis apparatus. Cut into segments as required; Part of gel can be stained directly in Coomassie brilliant blue R-250 (2.5 g Coomassie Brilliant Blue R-250, 450 mls methanol, 100 mls glacial acetic acid, water to 1 liter). Part to be used for electroblotting is put into tap water on shaker, after first having marked it unambiguously to identify top/bottom, left and right etc.
2. Leave in water on shaker for 5 minutes. This step can be substituted by washing the gel in electro-transfer buffer (see below) for 5 minutes.
3. We use a semidry blotter, which we have found to be quicker, more economical and easier than fully submerged blotting methods. We cut Whatman 3M filter papers to the size of our gels, and place three of these onto the semi dry blotter. These are then wet with transfer buffer (we routinely use 3.03 g Tris base, 14.4 g Glycine, 10% Methanol per liter). The gel is put onto the filters and a prewetted nitrocellulose filter is put on top of the gel. Alternately put a PVDF membrane on top; if you are using PVDF remember it is essential to prewet the PVDF in 100% methanol. Great care should be taken to ensure that no air bubbles are anywhere in this stack of membranes. Then three more wetted Whatman 3M filters should be placed on top of the pile, again taking great care not to have any bubbles in pile. Put the top onto the apparatus and screw it down. Proteins in transfer buffer are negative in charge mostly due to residual SDS and they therefore move from -ve to +ve pole. So the +ve electrode is above the nitrocellulose and the -ve side is below the gel.
4. Run for 30 minutes to 1 hour at ~100mA. The most reliable way of doing this is to use a powerful power supply 200-500mA and put it on constant voltage, with a setting of 5 to 10 Volts. Low molecular weight proteins (20kDa or less) will transfer in 30 minutes at 5 Volts, while higher molecular weight (150kDa or more) transfer in 60 minutes at 10 Volts.
5. After running disassemble the apparatus and remove nitrocellulose filter. Stain this for 5 minutes on shaker in Ponceau reagent (0.25% Ponceau S in 40% methanol and 15% acetic acid). Destain with regular SDS-PAGE gel destain solution (7.5% methanol, 10% acetic acid). If you transferred efficiently, the proteins can be seen as pale pink bands. This tells you whether the transfer was O.K. or not and also exactly where the bands are. You can photograph, photocopy or mark the position of the bands directly with a pencil. If you can't see any bands at this stage, it's probably smart to try to optimize steps 3 and 4. The gel may be discarded or may be stained as usual in coomassie, to see how much protein is left behind.
6. After Ponceau staining put the nitrocellulose filter into blocking solution, such as 1% bovine serum albumin (BSA) or 1% Carnation non fat milk (NFM), for 20 minutes to 1 hr at RT or 37°C. Since the NFM works just as well as BSA but is much cheaper, there is really no good reason to use BSA. Ponceau staining will fade to become completely invisible. Carry on with antibody incubations etc.

Antibody Incubations:

1. Put in antibody solutions. Volume should be enough to cover blot and allow it to float freely when you agitate. In initial experiments, antibody concentration should generally be about 1:100 - 1:1,000 for ascites, CL350 tissue culture supernatant or antiserum, undiluted to 1:10 for monoclonal supernatant, and about 1-10µg/ml for a pure IgG. If dilution brings antibody concentration to less than 50 µgs/ml, add some BSA or NFM to act as carrier protein (e.g. make BSA or NFM concentration 1mg/ml). Incubate for at least 1 hour with shaking (can be room temperature or at 37°C, can also do overnight at 4°C).
2. Wash membranes in TBS (10mM Tris, 154mM NaCl, pH=7.5 plus 0.1% Tween 20) for 3 times at least five minutes each time with extensive agitation.
3. Incubate in second antibody (peroxidase-conjugate, phosphatase conjugate or radioactive). Add BSA or NFM carrier as before if necessary. Incubate for at least one hour at room temperature or 37°C can also do overnight at 4°C with shaking as before.
4. Wash membranes in TBS (10mM Tris, 154mM NaCl, pH=7.5 plus 0.1% Tween 20) for 3 times at least five minutes each time with extensive agitation.

A. Alkaline Phosphatase Blot System

FOR RESEARCH USE ONLY

NEUROMICS' REAGENTS ARE FOR IN VITRO AND CERTAIN NON-HUMAN IN VIVO EXPERIMENTAL USE ONLY AND NOT INTENDED FOR USE IN ANY HUMAN CLINICAL INVESTIGATION, DIAGNOSIS, PROGNOSIS, OR TREATMENT. THE ABOVE ANALYSES ARE MERELY TYPICAL GUIDES. THEY ARE NOT TO BE CONSTRUED AS BEING SPECIFICATIONS. ALL OF THE ABOVE INFORMATION IS, TO THE BEST OF OUR KNOWLEDGE, TRUE AND ACCURATE. HOWEVER, SINCE THE CONDITIONS OF USE ARE BEYOND OUR CONTROL, ALL RECOMMENDATIONS OR SUGGESTIONS ARE MADE WITHOUT GUARANTEE, EXPRESS OR IMPLIED, ON OUR PART. WE DISCLAIM ALL LIABILITY IN CONNECTION WITH THE USE OF THE INFORMATION CONTAINED HEREIN OR OTHERWISE, AND ALL SUCH RISKS ARE ASSUMED BY THE USER. WE FURTHER EXPRESSLY DISCLAIM ALL WARRANTIES OF MERCHANTABILITY AND FITNESS FOR A PARTICULAR PURPOSE. V1-05/2012

www.neuromics.com

1. Incubate in alkaline phosphatase conjugated antibody against the primary antibody (e.g. Goat anti-mouse, rabbit or chicken; buy from Sigma or some other trusted source). Typical concentration is 1:1,000 in TBS (10mM Tris/HCl, 154mM NaCl, pH=7.5). Add a small amount of BSA or NFM to act as carrier. Incubate for 1 hour at room temperature (or 37°C) with shaking.

2. Wash in TBS three times 5 minutes each. (N.B. the alkaline phosphatase enzyme is inhibited by EDTA, which chelates zinc and magnesium, and by phosphate, which inhibits forward reaction. Make sure therefore you use TBS which is EDTA and phosphate free- Don't make up developer in PBS!)

3. Put into developer. Buffer is 100mM Tris/HCl, 100mM NaCl, 5mM MgCl₂ pH=9.5. To 10ml of this add 33µl BCIP-T (5-bromo-4-chloro-3-indolyl phosphate, p-toluidine salt, make up 50mg/ml in water or Dimethyl formamide; in water makes a yellow suspension) and 33µl of NBT (Nitro Blue Tetrazolium, also 50mg/ml in water). Can store these solutions at -20°C. Can buy this solution made up already from Sigma. Reaction product is purple, and appears in a few minutes; can incubate for up to an hour if the signal is weak. Watch development of reaction and stop with water. Some of background disappears on drying.

B. Horse Radish Peroxidase Staining

After washing of blots in TBS or PBS (must not have azide in wash buffer! This inhibits the peroxidase enzyme) add reaction mixture. This is; 20 mls 0.1M Tris/HCl pH=7.2 (Vecta stain buffer). 200 µl NiCl (80 mg/ml), 6 µl 30% hydrogen peroxide, 1ml of 5mgs/ml diaminobenzidine. (Wear gloves, DAB is carcinogenic). Alternate protocol; Make 20 mls ammonium acetate buffer (50mM, pH=5.0). Add 1 ml of 10mg/ml Diaminobenzidine, 40µl 30% hydrogen peroxide. Brown reaction product is seen in 1-10 minutes, not quite so nice as above method.

C. Chemiluminescence Staining

Chemiluminescence has an advantage of perhaps an order of magnitude greater sensitivity than the dye based methods above. In addition, several films may be exposed from a single blot, giving an advantage in interpretation of weak and strong signals on the same membrane. However it requires a darkroom to perform and is more expensive in reagents. Reagents are generally bought in a kit, and we recommend simply following the kit instructions.

FOR RESEARCH USE ONLY

NEUROMICS' REAGENTS ARE FOR IN VITRO AND CERTAIN NON-HUMAN IN VIVO EXPERIMENTAL USE ONLY AND NOT INTENDED FOR USE IN ANY HUMAN CLINICAL INVESTIGATION, DIAGNOSIS, PROGNOSIS, OR TREATMENT. THE ABOVE ANALYSES ARE MERELY TYPICAL GUIDES. THEY ARE NOT TO BE CONSTRUED AS BEING SPECIFICATIONS. ALL OF THE ABOVE INFORMATION IS, TO THE BEST OF OUR KNOWLEDGE, TRUE AND ACCURATE. HOWEVER, SINCE THE CONDITIONS OF USE ARE BEYOND OUR CONTROL, ALL RECOMMENDATIONS OR SUGGESTIONS ARE MADE WITHOUT GUARANTEE, EXPRESS OR IMPLIED, ON OUR PART. WE DISCLAIM ALL LIABILITY IN CONNECTION WITH THE USE OF THE INFORMATION CONTAINED HEREIN OR OTHERWISE, AND ALL SUCH RISKS ARE ASSUMED BY THE USER. WE FURTHER EXPRESSLY DISCLAIM ALL WARRANTIES OF MERCHANTABILITY AND FITNESS FOR A PARTICULAR PURPOSE. V1-05/2012

www.neuromics.com

Image: rat mixed neuron/glia cultures stained with 14-3-3 eta antibody (red). Neuronal perikarya are very rich in 14-3-3 eta which has a diffuse cytoplasmic staining pattern. Blue is a DNA stain.

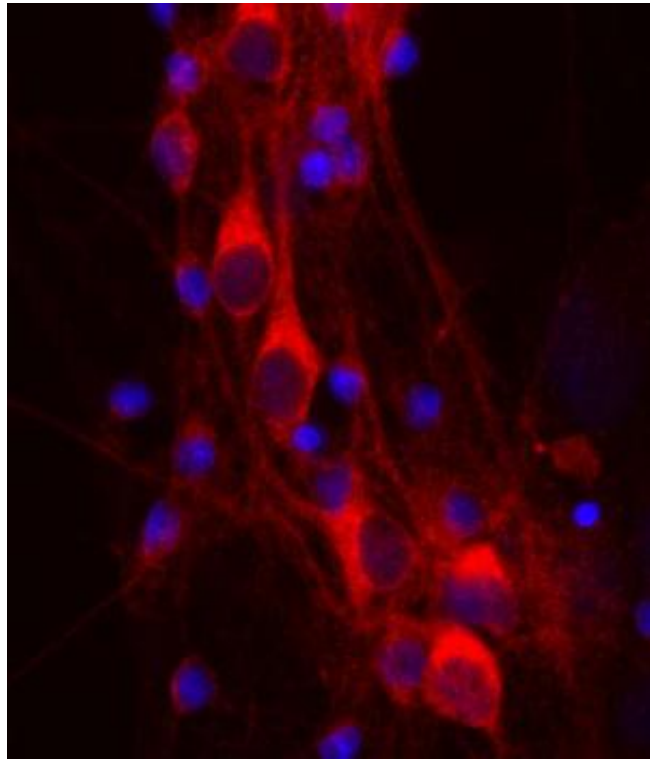
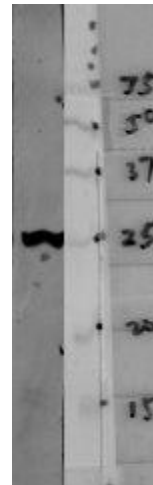


Image: Blots of crude HeLa cell homogenate blotted with 14-3-3 eta (left lane) and various molecular weight standards (right lane- numbers indicate apparent SDS-PAGE molecular weight in kDa). The mouse monoclonal antibody binds strongly and cleanly to a band at about 28kDa.



FOR RESEARCH USE ONLY

NEUROMICS' REAGENTS ARE FOR IN VITRO AND CERTAIN NON-HUMAN IN VIVO EXPERIMENTAL USE ONLY AND NOT INTENDED FOR USE IN ANY HUMAN CLINICAL INVESTIGATION, DIAGNOSIS, PROGNOSIS, OR TREATMENT. THE ABOVE ANALYSES ARE MERELY TYPICAL GUIDES. THEY ARE NOT TO BE CONSTRUED AS BEING SPECIFICATIONS. ALL OF THE ABOVE INFORMATION IS, TO THE BEST OF OUR KNOWLEDGE, TRUE AND ACCURATE. HOWEVER, SINCE THE CONDITIONS OF USE ARE BEYOND OUR CONTROL, ALL RECOMMENDATIONS OR SUGGESTIONS ARE MADE WITHOUT GUARANTEE, EXPRESS OR IMPLIED, ON OUR PART. WE DISCLAIM ALL LIABILITY IN CONNECTION WITH THE USE OF THE INFORMATION CONTAINED HEREIN OR OTHERWISE, AND ALL SUCH RISKS ARE ASSUMED BY THE USER. WE FURTHER EXPRESSLY DISCLAIM ALL WARRANTIES OF MERCHANTABILITY AND FITNESS FOR A PARTICULAR PURPOSE. V1-05/2012

www.neuromics.com

Neuromics Antibodies • 5325 West 74th Street, Suite 8 • Edina, MN 55439
phone 866-350-1500 • fax 612-677-3976 • e-mail pshuster@neuromics.com

Neuron/Synapse Markers

Name	Catalog #	Type	Species	Applications	Size	Price
alpha-II-spectrin/alpha-Fodrin	MO22110	Mouse IgG	H; M; R	IF; WB	100 ul	\$295
p11 (Calpactin I Light Chain / Annexin II)	CH14101	Chicken IgY	R	IHC	100 ul	\$250
ATPase Na+/K+ transporting alpha 1	MO20028	Mouse IgG	Ca; H; M; Pr; R; Rb	ICC; IF; IHC; WB; FC	50 ul	\$285
Adenylate Cyclase III/ADCY3	RA22114	Rabbit IgG	Ca; Ch; H; M; R	ICC; IHC; WB	100 ul	\$245
Alpha 2a Adrenergic Receptor	RA14110	Rabbit IgG	R	IHC	50 ul 150 ul	\$190 \$456
					100 ug Blocking Peptide	\$95
CADM1/SynCAM	RA25084	Rabbit IgG	M	IF; IHC	100 ul	\$275
CNPase	CH23013	Chicken IgY	H; M	ICC; IHC	100 ul	\$89
Calbindin	MO20016	Mouse IgG	H	IHC	100 ug	\$175
Calretinin	MO20024	Mouse IgG	H	IHC	100 ul	\$155
ChAT	CH23000	Chicken IgY	H; M; R	ICC; IHC; WB	100 ul	\$89
ChAT	MO20019	Mouse IgG	H	IHC	100 ul	\$125
Doublecortin/DCX	MO22113	Mouse IgG	B; H; M; P; R	IF; WB	100 ul	\$245
FOX3/NeuN	RA22113	Chicken IgY	H; M; R	IF; IHC; WB	100 ul	\$245
FOX3/NeuN	CH23022	Chicken IgY	M; R	ICC; IHC	100 ul	\$95
GAD1/GAD67	GT15142	Goat IgG	H; M; R	IHC; WB; E	100 ug	\$365
GAP43	MO22118	Mouse IgG	H; M; R	ICC; IF; WB	100 ul	\$225
GAP43	RA22115	Rabbit IgG	B; H; M; R	IF; WB	100 ul	\$245
GAP43	RA25086	Rabbit IgG	Ch; H; M; R	IHC; WB; FC	100 ul	\$285
HSP105	MO20028	Mouse IgG	H; M; R	IHC; WB	100 ul	\$155
Ki67	RA25039	Rabbit IgG	H; M; P	ICC; IF; IHC	500 ul	\$350
Lingo-1	GT15170	Goat IgG	H; M; R	IHC; WB; E	100 ug	\$365
MAP2 (Microtubule assoc. protein 2)	CH22103	Chicken IgY	H; M; Pr; R	ICC; IHC; WB	50 ul	\$295
MAP2 (Microtubule assoc. protein 2)	MO30000	Mouse IgG	H; M; P	IHC	50 ul	\$365
MAP2 (Microtubule assoc. protein 2)	MO22116	Mouse IgG	B; H; M; R	IF; WB	100 ul	\$225

Name	Catalog #	Type	Species	Applications	Size	Price
Mash1	GT15216	Goat IgG	M	IHC; WB; E	100 ug	\$365
Mash1	MO15048	Rat IgG	H; M	ICC; WB; E	100 ug	\$255
Matrix Metalloproteinase 24 (MMP-24, MT5-MMP)-Human	RA15045	Rabbit IgG	H	IHC; WB	50 ug 100 ug	\$89 \$345
Myelin Basic Protein	CH22112	Chicken IgY	B; H; M; R	IF; WB	100 ul	\$275
Myelin Basic Protein	MO22121	Chicken IgY	H; R	IF; WB	100 ul	\$225
Myelin Basic Protein	MO20009	Mouse IgG	H	IHC	100 ul	\$225
NCAM-L1/CD171	GT15143	Goat IgG	H	IHC; WB; E	100 ug	\$365
NMDA NR1 Pan	MO25041	Rabbit IgG	R	WB	15 ug	\$285
NMDA Receptor 1, N1	RA25036	Rabbit IgG	R	IHC; WB	25 ug	\$285
NMDA Receptor 2A	RA25037	Rabbit IgG	H; R	IHC; WB; IP	10 ug	\$285
Neurofilament NF-H	MO22120	Mouse IgG	B; Ca; Ch; D; EQ;	ICC; IF; IHC; WB	100 ul	\$275

FOR RESEARCH USE ONLY

NEUROMICS' REAGENTS ARE FOR IN VITRO AND CERTAIN NON-HUMAN IN VIVO EXPERIMENTAL USE ONLY AND NOT INTENDED FOR USE IN ANY HUMAN CLINICAL INVESTIGATION, DIAGNOSIS, PROGNOSIS, OR TREATMENT. THE ABOVE ANALYSES ARE MERELY TYPICAL GUIDES. THEY ARE NOT TO BE CONSTRUED AS BEING SPECIFICATIONS. ALL OF THE ABOVE INFORMATION IS, TO THE BEST OF OUR KNOWLEDGE, TRUE AND ACCURATE. HOWEVER, SINCE THE CONDITIONS OF USE ARE BEYOND OUR CONTROL, ALL RECOMMENDATIONS OR SUGGESTIONS ARE MADE WITHOUT GUARANTEE, EXPRESS OR IMPLIED, ON OUR PART. WE DISCLAIM ALL LIABILITY IN CONNECTION WITH THE USE OF THE INFORMATION CONTAINED HEREIN OR OTHERWISE, AND ALL SUCH RISKS ARE ASSUMED BY THE USER. WE FURTHER EXPRESSLY DISCLAIM ALL WARRANTIES OF MERCHANTABILITY AND FITNESS FOR A PARTICULAR PURPOSE. V1-05/2012

www.neuromics.com

Name	Catalog #	Type	Species	Applications	Size	Price
Neurofilament NF-H	CH22104	Chicken IgY	H; M; Pr; R	ICC; IHC; WB	50 ul	\$275
Neurofilament NF-H	CH23015	Chicken IgY	H; M	IHC	200 ul	\$250
Neurofilament NF-H, phosphate independent	RA22112	Rabbit IgG	R	IF; WB	100 ul	\$275
Neurofilament NF-H, phosphorylated	MO22103	Mouse IgG	Ch; H; M; Pr; R	ICC; IHC; WB	100 ul	\$225
Neurofilament NF-H, phosphorylated	RA22116	Rabbit IgG	Ch; H; M; Pr; R	ICC; IHC; WB	100 ul	\$275
Neurofilament NF-L	RA22117	Rabbit IgG	Ca; Ch; H; M; R	ICC; IF; WB	100 ul	\$275
Neurofilament NF-L	CH22105	Chicken IgY	Ca; Ch; H; M; R	ICC; IHC; WB	100 ul	\$275
Neurofilament NF-L	MO22104	Mouse IgG	Ca; Ch; H; M; R	ICC; IHC; WB; E	100 ul	\$275
Neurofilament NF-M	CH22106	Chicken IgY	Ch; H; M; R	ICC; IHC; WB	100 ul	\$275
Neurofilament NF-M	MO22105	Mouse IgG	C; Ch; H; M; R	ICC; IHC; WB	100 ul	\$225
Neurofilament NF-M	CH23014	Chicken IgY	H; M	IHC	200 ul	\$250
Neurofilament NF-M	RA22105	Rabbit IgG	Ca; Ch; H; M; R	ICC; IHC; WB	100 ul	\$275
Neurofilament alpha-internexin/NF66	MO25017	Mouse IgG	H; R	ICC; IF; WB	100 ul	\$275
Neurofilament alpha-internexin/NF66	CH22101	Chicken IgY	H; M; R	IF; FC	100 ul	\$275
Neurofilament alpha-internexin/NF66	RA22102	Rabbit IgG	H; M; R	IF; WB	100 ul	\$275
Neuron Specific Enolase (NSE)/ENO2	CH23003	Chicken IgY	H; M	ICC; IHC; WB	100 ul	\$89
Neuron Specific Enolase (NSE)/ENO2	RA22110	Rabbit IgG	H	IF; WB	100 ul	\$275
Neurotensin Receptor 3 (NTS3)/Sortilin	GT15237	Goat IgG	H	IHC; WB; E; NB	100 ug	\$365
PGP9.5	MO20002	Mouse IgG	H; M; R	IHC; WB	100 ul	\$395
PGP9.5	RA12103	Rabbit IgG	H; M; P; R	IHC; WB	50 ul	\$145
					150 ul	\$348
PGP9.5 (Clone: 31A3)	MO25010	Mouse IgG	H; M; R	IHC; WB; E	100 ul	\$475
PGP9.5 175-191	GP14104	Guinea Pig IgG	H; M; R	IHC	50 ul	\$175
					150 ul	\$395
					20 ug Blocking Peptide	\$95
PLP (Proteolipid Protein)	CH23008	Chicken IgY	H; M	ICC; IHC; WB	100 ul	\$99
PTGDS	RA25023	Rabbit IgG	H	WB	100 ul	\$295
Peripherin	MO22106	Mouse IgG	Ca; H; M; R	ICC; IF; WB	500 ul	\$225
phospho-NMDA Receptor 1 (Ser890)	RA18011	Rabbit IgG	H; M; R	WB	100 ul	\$370
Phospho-NMDA Receptor 1 (Ser896)	RA18012	Rabbit IgG	H; M; R	IHC; WB	100 ul	\$370
phospho-Myelin Basic Protein	MO15103	Mouse IgG	B; H; M; R	WB	100 ug	\$255
phospho-Synapsin (Ser9)	RA18009	Rabbit IgG	M; R	WB	100 ul	\$370
phospho-Tyrosine Hydroxylase (Ser40)	RA18026	Rabbit IgG	R	IF; IHC; WB; IP	100 ul	\$335
RAGE	GT15030	Goat IgG	M	IHC; WB; E	100 ug	\$365

FOR RESEARCH USE ONLY

NEUROMICS' REAGENTS ARE FOR IN VITRO AND CERTAIN NON-HUMAN IN VIVO EXPERIMENTAL USE ONLY AND NOT INTENDED FOR USE IN ANY HUMAN CLINICAL INVESTIGATION, DIAGNOSIS, PROGNOSIS, OR TREATMENT. THE ABOVE ANALYSES ARE MERELY TYPICAL GUIDES. THEY ARE NOT TO BE CONSTRUED AS BEING SPECIFICATIONS. ALL OF THE ABOVE INFORMATION IS, TO THE BEST OF OUR KNOWLEDGE, TRUE AND ACCURATE. HOWEVER, SINCE THE CONDITIONS OF USE ARE BEYOND OUR CONTROL, ALL RECOMMENDATIONS OR SUGGESTIONS ARE MADE WITHOUT GUARANTEE, EXPRESS OR IMPLIED, ON OUR PART. WE DISCLAIM ALL LIABILITY IN CONNECTION WITH THE USE OF THE INFORMATION CONTAINED HEREIN OR OTHERWISE, AND ALL SUCH RISKS ARE ASSUMED BY THE USER. WE FURTHER EXPRESSLY DISCLAIM ALL WARRANTIES OF MERCHANTABILITY AND FITNESS FOR A PARTICULAR PURPOSE. V1-05/2012

www.neuromics.com

Neuromics Antibodies • 5325 West 74th Street, Suite 8 • Edina, MN 55439
 phone 866-350-1500 • fax 612-677-3976 • e-mail pshuster@neuromics.com

RAGE	MO15029	Rat IgG	M; R	IHC; WB; E	500 ug	\$325
ROBO1	GT15144	Goat IgG	R	IHC; WB; E	100 ug	\$365
SCP1	RA25052	Rabbit IgG	M	IF; IHC	100 ul	\$275
SCP3	RA25051	Rabbit IgG	M	IF; IHC	100 ul	\$275
Survivin	RA19022	Rabbit IgG	H; M; R	WB	100 ug	\$225
Name	Catalog #	Type	Species	Applications	Size	Price
Synapsin	RA18010	Rabbit IgG	M; R	IHC; WB	100 ul	\$370
Synaptotagmin 1	MO25043	Mouse IgG	R	ICC; IF; WB; IP	100 ul	\$285
Synaptophysin	MO20000	Mouse IgG	H; R	IHC; WB	100 ul	\$175
Synaptosomal Associated Protein 25/SNAP25	RA30045	Rabbit IgG	M; R	IHC; WB; E	50 ug	\$425
Tau	CH23018	Chicken IgY	H; M; R	ICC; IHC	100 ul	\$89
Tau (Tau 46)	MO18002	Mouse IgG	H; M; R	IF; IHC; WB; IP	100 ul	\$275
Tau /MAPT+	CH22113	Rabbit IgG	H; R	IF; WB	100 ul	\$245
Tuj 1 (Neuron-specific class III beta-tubulin)	MO15013	Mouse IgG	H	ICC; IF; IHC; WB	100 ug	\$265
Tuj 1 (Neuron-specific class III beta-tubulin)	CH23005	Chicken IgY	H; M	ICC; IHC; WB	100 ul	\$99
Tyrosine Hydroxylase	MO22941	Mouse IgM	M; Pr; R	IHC; WB	100 ul	\$350
Tyrosine Hydroxylase	CH23006	Chicken IgY	H; M	ICC; IHC; WB	100 ul	\$99
Tyrosine Hydroxylase	SO25000	Sheep IgG	H; M; Pr; R	ICC; IF; IHC; WB	100 ul	\$325
Tyrosine Hydroxylase	MO20001	Mouse IgG	H; M; R	ICC; WB	100 ul	\$200
UCHL1	MO25040	Mouse IgG	B; H; R	IF; WB	500 ul	\$285
VAMP-1	GT15236	Goat IgG	H; M	IHC; WB; E	100 ug	\$365

FOR RESEARCH USE ONLY

NEUROMICS' REAGENTS ARE FOR IN VITRO AND CERTAIN NON-HUMAN IN VIVO EXPERIMENTAL USE ONLY AND NOT INTENDED FOR USE IN ANY HUMAN CLINICAL INVESTIGATION, DIAGNOSIS, PROGNOSIS, OR TREATMENT. THE ABOVE ANALYSES ARE MERELY TYPICAL GUIDES. THEY ARE NOT TO BE CONSTRUED AS BEING SPECIFICATIONS. ALL OF THE ABOVE INFORMATION IS, TO THE BEST OF OUR KNOWLEDGE, TRUE AND ACCURATE. HOWEVER, SINCE THE CONDITIONS OF USE ARE BEYOND OUR CONTROL, ALL RECOMMENDATIONS OR SUGGESTIONS ARE MADE WITHOUT GUARANTEE, EXPRESS OR IMPLIED, ON OUR PART. WE DISCLAIM ALL LIABILITY IN CONNECTION WITH THE USE OF THE INFORMATION CONTAINED HEREIN OR OTHERWISE, AND ALL SUCH RISKS ARE ASSUMED BY THE USER. WE FURTHER EXPRESSLY DISCLAIM ALL WARRANTIES OF MERCHANTABILITY AND FITNESS FOR A PARTICULAR PURPOSE. V1-05/2012

www.neuromics.com

Neuromics Antibodies • 5325 West 74th Street, Suite 8 • Edina, MN 55439
 phone 866-350-1500 • fax 612-677-3976 • e-mail pshuster@neuromics.com