



Catalog Number:	MO20024	Host:	Mouse
Ig Class:	IgG _{2A}	Species Reactivity:	Human
Immunogen Sequence:	Prokaryotic recombinant protein corresponding to the entire human calretinin molecule. Clone: CAL6	Format:	Liquid- tissue culture supernatant containing 15mM sodium azide. Concentration: > 207.0 mg/L as determined by ELISA. Refer to vial label for batch specific Ig concentration.
Applications:	Immunohistochemistry-1:200 (Paraffin-embedded tissue) Heat induced Epitope Retrieval		
Storage:	Dilutions listed as a recommendation. Optimal dilution should be determined by investigator. Antibody can be aliquotted and stored frozen at -20° C to -70° C in a manual defrost freezer for six months without detectable loss of activity. The antibody can be stored at 2° - 8° C for 1 month without detectable loss of activity. <i>Avoid repeated freeze-thaw cycles.</i>		

Application Notes

Immunohistochemistry (paraffin sections only):

Suggested dilution: 1:200 for 30 minutes at 25°C. Heat induced epitope retrieval using Epitope Retrieval.

Results Expected:

Normal Tissues: Clone CAL6 detects the calretinin protein in mesothelial cells, some neurons in the CNS and peripheral nerve (especially large neurons), some thecal cells in ovary and Leydig cells and spermatogonia of testis. No additional staining other than nerve elements and occasional infiltrating cells was observed in a variety of other normal tissues evaluated (n=49).

Tumor Tissues: Clone CAL6 stained 8/9 mesotheliomas, 1/2 gastric carcinomas, 2/2 adrenal oncocytomas, focal staining was observed in 1/3 melanomas, 2/5 ovarian tumors and an islet cell tumor of the pancreas. No staining was observed in a variety of other tumors evaluated (n=74).

Description/Data:

Calretinin (CAL6), a member of the family of so-called EF-hand proteins that also includes S-100 proteins, is a 29 kDa calcium binding protein that is expressed in central and peripheral nervous system and in many normal and pathological tissues.

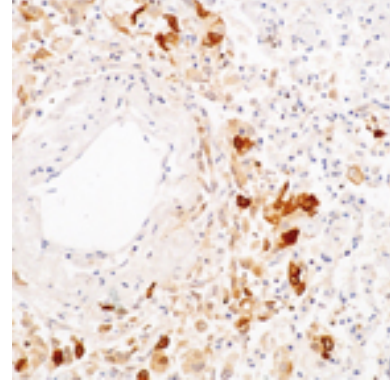
Outside the nervous system, calretinin is reported to be expressed in a range of cell types including mesothelial cells, steroid producing cell, (eg adrenal cortical cells, Leydig cells, ovarian theca interna cells as well as Sertoli cells, some neuroendocrine cells, eccrine sweat glands) and other cell types.

The presence of calretinin is reported to be a useful marker primarily for differentiating malignant mesothelioma from carcinomas. Other reports indicate the detection of calretinin is helpful for the differential characterization of ovarian stroma tumors. Calretinin-positive cells have also been reported in the convoluted tubules of kidney with some antibodies.

FOR RESEARCH USE ONLY

NEUROMICS' REAGENTS ARE FOR IN VITRO AND CERTAIN NON-HUMAN IN VIVO EXPERIMENTAL USE ONLY AND NOT INTENDED FOR USE IN ANY HUMAN CLINICAL INVESTIGATION, DIAGNOSIS, PROGNOSIS, OR TREATMENT. THE ABOVE ANALYSES ARE MERELY TYPICAL GUIDES. THEY ARE NOT TO BE CONSTRUED AS BEING SPECIFICATIONS. ALL OF THE ABOVE INFORMATION IS, TO THE BEST OF OUR KNOWLEDGE, TRUE AND ACCURATE. HOWEVER, SINCE THE CONDITIONS OF USE ARE BEYOND OUR CONTROL, ALL RECOMMENDATIONS OR SUGGESTIONS ARE MADE WITHOUT GUARANTEE, EXPRESS OR IMPLIED, ON OUR PART. WE DISCLAIM ALL LIABILITY IN CONNECTION WITH THE USE OF THE INFORMATION CONTAINED HEREIN OR OTHERWISE, AND ALL SUCH RISKS ARE ASSUMED BY THE USER. WE FURTHER EXPRESSLY DISCLAIM ALL WARRANTIES OF MERCHANTABILITY AND FITNESS FOR A PARTICULAR PURPOSE. -V2/08/2012

Image: Calretinin staining of human mesotheliom. Note cytoplasmic staining of malignant cells. Paraffin section.



FOR RESEARCH USE ONLY

NEUROMICS' REAGENTS ARE FOR IN VITRO AND CERTAIN NON-HUMAN IN VIVO EXPERIMENTAL USE ONLY AND NOT INTENDED FOR USE IN ANY HUMAN CLINICAL INVESTIGATION, DIAGNOSIS, PROGNOSIS, OR TREATMENT. THE ABOVE ANALYSES ARE MERELY TYPICAL GUIDES. THEY ARE NOT TO BE CONSTRUED AS BEING SPECIFICATIONS. ALL OF THE ABOVE INFORMATION IS, TO THE BEST OF OUR KNOWLEDGE, TRUE AND ACCURATE. HOWEVER, SINCE THE CONDITIONS OF USE ARE BEYOND OUR CONTROL, ALL RECOMMENDATIONS OR SUGGESTIONS ARE MADE WITHOUT GUARANTEE, EXPRESS OR IMPLIED, ON OUR PART. WE DISCLAIM ALL LIABILITY IN CONNECTION WITH THE USE OF THE INFORMATION CONTAINED HEREIN OR OTHERWISE, AND ALL SUCH RSKS ARE ASSUMED BY THE USER. WE FURTHER EXPRESSLY DISCLAIM ALL WARRANTIES OF MERCHANTABILITY AND FITNESS FOR A PARTICULAR PURPOSE.-V2/08/2012

www.neuromics.com

Neuromics Antibodies • 5325 West 74th Street, Suite 8 • Edina, MN 55439
phone 866-350-1500 • fax 612-677-3976 • e-mail: pshuster@neuromics.com