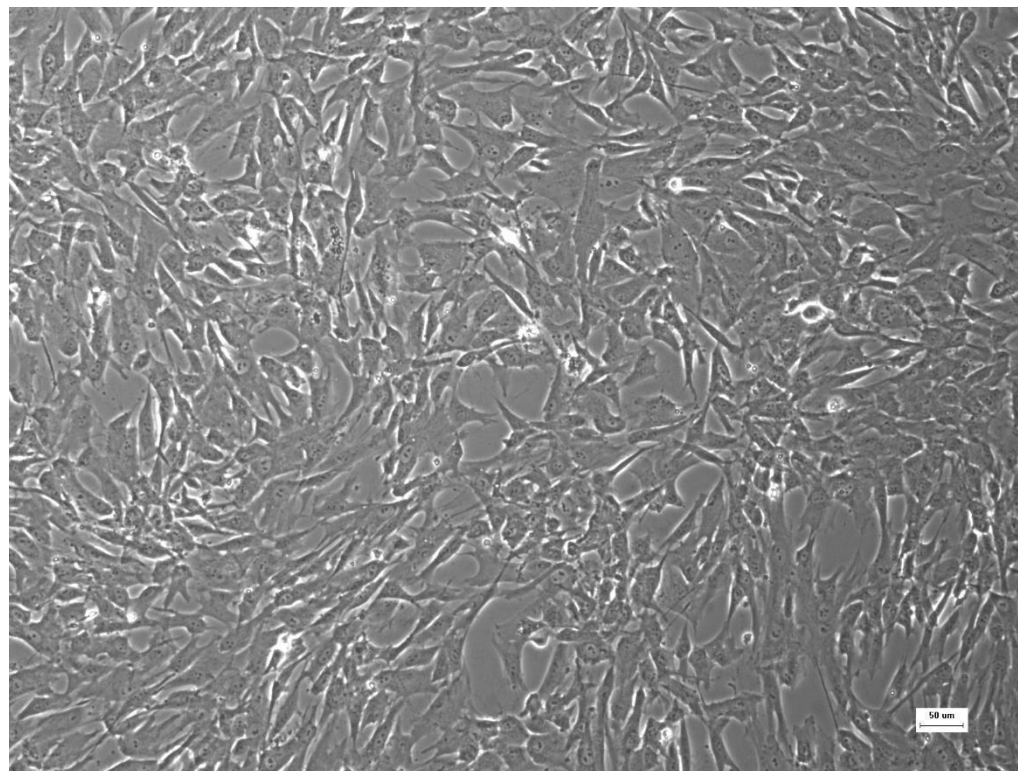
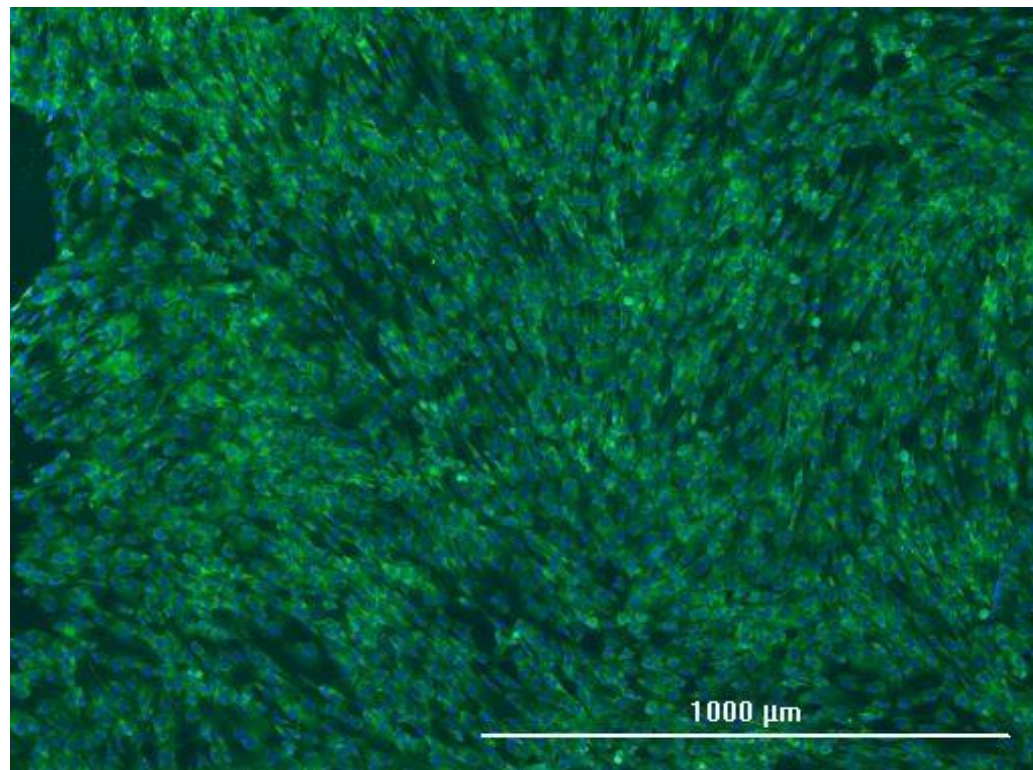


Pancreatic Stellate CAFs Catalog Number (CAF08)



CAF08: Pancreatic stellate cancer-associated fibroblasts (Cat. No. CAF08) were plated at 5,000/cm² in a Greiner Bio-One T75 flask and maintained in MSC-GRO low serum, complete medium (Cat. No. SC00B1) in a reduced O₂ environment (1%O₂, 5%CO₂, 90%N₂) at 37°C in a humidified chamber. The CAFs were harvested and counted on a Beckman-Coulter Z2 particle counter (range 10-30uM). Doubling time of 31.3hrs was calculated using $\ln(2 \cdot dT) / \ln(C_f / C_i)$, where dT is the time, in hours, from inoculation to detachment; C_i is the initial number of cells plated and C_f is the final number of cells recovered from subculture.

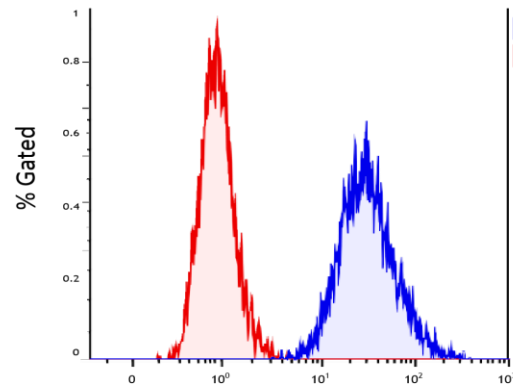
Pancreatic Stellate CAFs Catalog Number (CAF08)



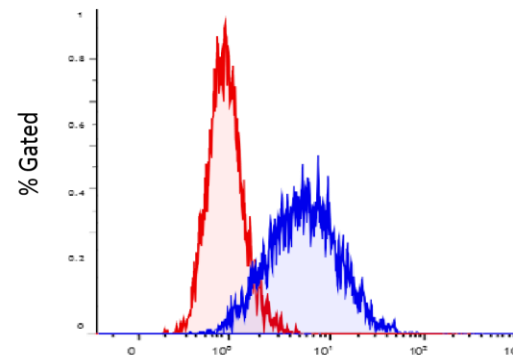
CAF08: Pancreatic stellate cancer-associated fibroblasts (Cat. No. CAF08) were plated at 5,000/cm² in a Corning 24 well-plate and maintained in Pancreatic Stellate Maintaining Media (Cat. No. PC00B5) in a reduced O₂ environment (1%O₂, 5%CO₂, 90%N₂) at 37°C in a humidified chamber. Once 80% confluency was obtained, CAFs were fixed with 10% formalin. Cells were permeablized with 0.1% Triton X100 and incubated in 5% goat serum for 1 hour. Cells were stained with 1:1000 αSMA for 2 hours and washed out 2x with PBS. Cells were stained with a anti-goat mouse IgG secondary antibody for 1 hour and read on a Biotek Cytation 3.

Pancreatic Stellate CAFs Catalog Number CAF08

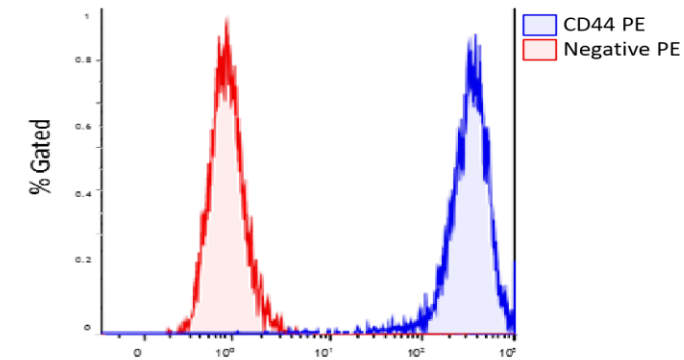
Flow Cytometry Data



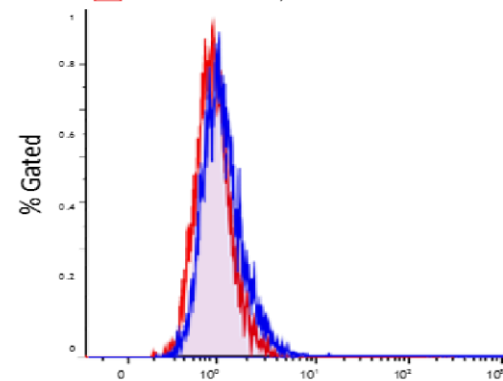
	Marker Number	X-Med
CD105 PE	4,580	30.38
Negative PE	4,629	0.93



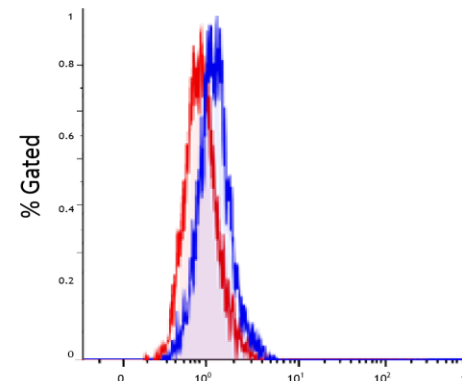
	Marker Number	X-Med
CD90 PE	4,585	5.37
Negative PE	4,629	0.93



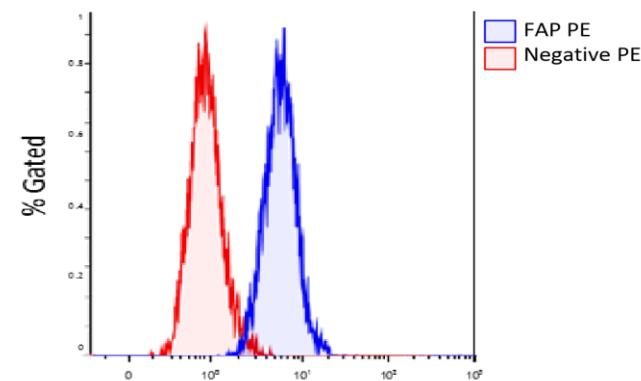
	Marker Number	X-Med
CD44 PE	4,585	331.43
Negative PE	4,629	0.93



	Marker Number	X-Med
CD326 PE	4,343	1.09
Negative PE	4,629	0.93



	Marker Number	X-Med
CD133 PE	4,297	1.28
Negative PE	4,629	0.93



	Marker Number	X-Med
FAP PE	4,268	5.64
Negative PE	4,629	0.93