



Catalog Number:	GT22103	Host:	Goat
Product Type:	Goat Polyclonal	Species Reactivity:	Human, rat, mouse, monkey, cow, pig, horse
Immunogen Sequence:	Recombinant Human vimentin expressed in and purified in E. coli	Format:	Serum in liquid form plus 5mM of Sodium Azide
Entrez:	7431	UniProt:	P08670
Applications:	Immunofluorescence: 1:2,000 Immunohistochemistry: 1:2,000 Immunocytochemistry: 1:2,000 Western Blot: 1:5,000		

Dilutions listed as a recommendation. Optimal dilution should be determined by investigator.

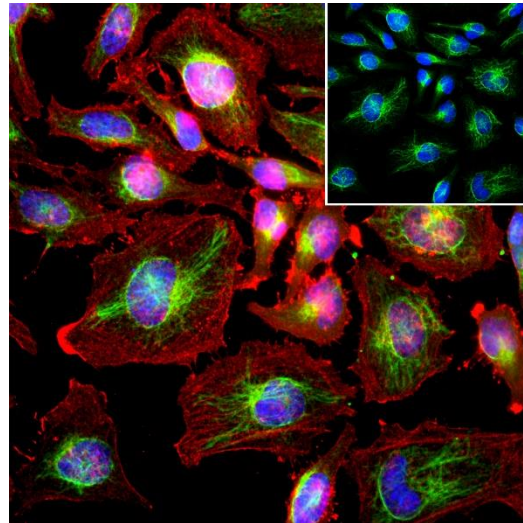
Storage: Antibody can also be aliquotted and stored frozen at -20° C in a manual defrost freezer for six months without detectable loss of activity. The antibody can be stored at 2° - 8° C for 1 month without detectable loss of activity. Avoid repeated freeze-thaw cycles.

Application Notes

Description/Data:

Vimentin protein is found in the eye lens and cornea, and found in mesenchymal tissues in adult mammals. In the CNS, it is found in endothelia cells and developing neurons, developing and some mature astrocytes, microglia, mature Bergmann glia and ependymal. Vimentin antibodies are useful in studying stem cells.

Image: Immunofluorescent analysis of HeLa cell culture stained with goat pAb to vimentin, GT22103, dilution 1:500 in green, and costained with mouse mAb to actin, MO22125 dilution 1:500 in red. Blue is Hoechst staining of nuclear DNA. GT22103 antibody produces strong staining of intermediate filament network of the cytoskeleton, while actin antibody stains the submembranous actin-rich cytoskeleton, stress fibers and bundles of actin associated with cell adhesion sites.



FOR RESEARCH USE ONLY

NEUROMICS' REAGENTS ARE FOR IN VITRO AND CERTAIN NON-HUMAN IN VIVO EXPERIMENTAL USE ONLY AND NOT INTENDED FOR USE IN ANY HUMAN CLINICAL INVESTIGATION, DIAGNOSIS, PROGNOSIS, OR TREATMENT. THE ABOVE ANALYSES ARE MERELY TYPICAL GUIDES. THEY ARE NOT TO BE CONSTRUED AS BEING SPECIFICATIONS. ALL OF THE ABOVE INFORMATION IS, TO THE BEST OF OUR KNOWLEDGE, TRUE AND ACCURATE. HOWEVER, SINCE THE CONDITIONS OF USE ARE BEYOND OUR CONTROL, ALL RECOMMENDATIONS OR SUGGESTIONS ARE MADE WITHOUT GUARANTEE, EXPRESS OR IMPLIED, ON OUR PART. WE DISCLAIM ALL LIABILITY IN CONNECTION WITH THE USE OF THE INFORMATION CONTAINED HEREIN OR OTHERWISE, AND ALL SUCH RISKS ARE ASSUMED BY THE USER. WE FURTHER EXPRESSLY DISCLAIM ALL WARRANTIES OF MERCHANTABILITY AND FITNESS FOR A PARTICULAR PURPOSE.-V2/08/2012