



Catalog Number:	CH22123	Host:	Chicken
Product Type:	Chicken Polyclonal	Species Reactivity:	Human, rat, mouse
Immunogen Sequence:	Recombinant construct, amino acids 317-630 of the human protein expressed in <i>E coli</i> .	Format:	Aliquot of IgY preparation plus 5mM of Sodium Azide
Entrez:	10763	UniProt:	P48681
Applications:	IF/IHC: 1:500-1:1,000 Western Blot: 1:5,000		

Dilutions listed as a recommendation. Optimal dilution should be determined by investigator.

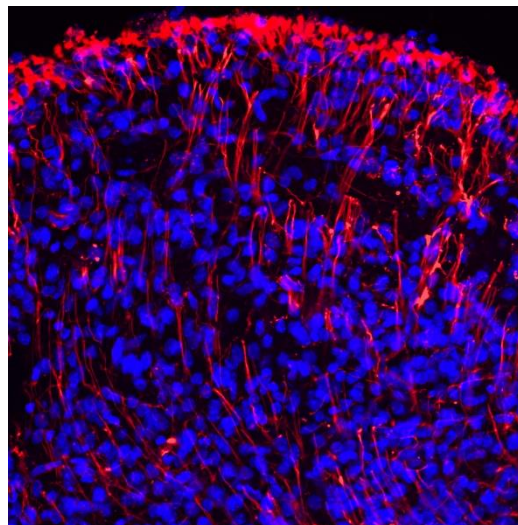
Storage: Antibody can also be aliquotted and stored frozen at -20° C in a manual defrost freezer for six months without detectable loss of activity. The antibody can be stored at 2° - 8° C for 1 month without detectable loss of activity. Avoid repeated freeze-thaw cycles.

Application Notes

Description/Data:

Nestin belongs to the class IV intermediate filament protein family. Nestin is expressed in radial glia and other dividing cells in the developing CNS, PNS and muscles. Nestin is also found to be expressed in brain tumors, particularly gliomas. Nestin is also a marker of stem cells in the pancreas and heart. The nestin amino acid sequence is relatively poorly conserved in protein sequence across species boundaries, so that the mouse and human proteins have an overall identity of only 62%. As a result, antibodies to the human protein often fail to recognize the rodent homologue and vice versa. However this antibody works well on both human and rodent cells and tissues.

Image: Immunofluorescent analysis of rat embryonic (E18) brain stained with chicken Nesting (CH22123), dilution 1:2,000 in red. Nuclear DNA is stained blue with Hoechst.



FOR RESEARCH USE ONLY

NEUROMICS' REAGENTS ARE FOR IN VITRO AND CERTAIN NON-HUMAN IN VIVO EXPERIMENTAL USE ONLY AND NOT INTENDED FOR USE IN ANY HUMAN CLINICAL INVESTIGATION, DIAGNOSIS, PROGNOSIS, OR TREATMENT. THE ABOVE ANALYSES ARE MERELY TYPICAL GUIDES. THEY ARE NOT TO BE CONSTRUED AS BEING SPECIFICATIONS. ALL OF THE ABOVE INFORMATION IS, TO THE BEST OF OUR KNOWLEDGE, TRUE AND ACCURATE. HOWEVER, SINCE THE CONDITIONS OF USE ARE BEYOND OUR CONTROL, ALL RECOMMENDATIONS OR SUGGESTIONS ARE MADE WITHOUT GUARANTEE, EXPRESS OR IMPLIED, ON OUR PART. WE DISCLAIM ALL LIABILITY IN CONNECTION WITH THE USE OF THE INFORMATION CONTAINED HEREIN OR OTHERWISE, AND ALL SUCH RSKS ARE ASSUMED BY THE USER. WE FURTHER EXPRESSLY DISCLAIM ALL WARRANTIES OF MERCHANTABILITY AND FITNESS FOR A PARTICULAR PURPOSE.-V2/08/2012