



Catalog Number:	CH22125	Host:	Chicken
Product Type:	Chicken Polyclonal	Species Reactivity:	Human, Rat, Mouse, Cow, and Monkey
Immunogen Sequence:	C-terminal 398 amino acids of human ankyrin 3 expressed in and purified in <i>E. Azide</i> . Concentration: 1mg/ml.	Format:	Purified liquid antibody in 50% PBS, 50% glycerol plus 5mM of Sodium <i>coli</i>
Entrez:	288	UniProt:	Q12955
Applications:	IF: 1:500-1,000 IHC: 1:500-1,000 WB: 1:5,000-10,000		

Storage: Dilutions listed as a recommendation. Optimal dilution should be determined by investigator. Antibody can also be aliquotted and stored frozen at -20° C in a manual defrost freezer for six months without detectable loss of activity. The antibody can be stored at 2° - 8° C for 1 month without detectable loss of activity. Avoid repeated freeze-thaw cycles.

Application Notes

Description/Data:

Ankyrin 3, also known as Ankyrin G, is larger than the related Ankyrin 1 and Ankyrin 2. Ankyrin 3 is expressed in the axon initial segment and the nodes of Ranvier in the nervous system. Antibodies against Ankyrin 3 thus can be useful in identifying the regions of axon initial segments and nodes of Ranvier. This antibody was made against the C-terminal 398 amino acid of human isotype 1, and works well on human and rat ankyrin 3 on western blots and section material. This segment is expressed by all ankyrin 3 three isotypes and contains the DEATH domain sequence.

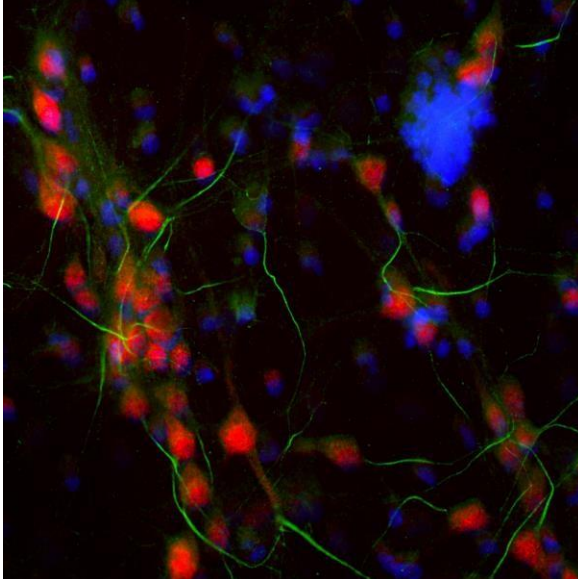


Image: Immunofluorescent analysis of cortical neuron-glia cell culture from E20 rat stained with chicken pAb to ankyrin 3, CH22125, dilution 1:2,000 in green, and costained with mouse mAb to FOX3/NeuN dilution 1:2,000 in red. The blue is Hoechst staining of nuclear DNA. The CH22125 antibody stains the axonal initial segments, while the FOX3/NeuN antibody reveals perikarya and nuclei of neurons.

FOR RESEARCH USE ONLY

NEUROMICS' REAGENTS ARE FOR IN VITRO AND CERTAIN NON-HUMAN IN VIVO EXPERIMENTAL USE ONLY AND NOT INTENDED FOR USE IN ANY HUMAN CLINICAL INVESTIGATION, DIAGNOSIS, PROGNOSIS, OR TREATMENT. THE ABOVE ANALYSES ARE MERELY TYPICAL GUIDES. THEY ARE NOT TO BE CONSTRUED AS BEING SPECIFICATIONS. ALL OF THE ABOVE INFORMATION IS, TO THE BEST OF OUR KNOWLEDGE, TRUE AND ACCURATE. HOWEVER, SINCE THE CONDITIONS OF USE ARE BEYOND OUR CONTROL, ALL RECOMMENDATIONS OR SUGGESTIONS ARE MADE WITHOUT GUARANTEE, EXPRESS OR IMPLIED, ON OUR PART. WE DISCLAIM ALL LIABILITY IN CONNECTION WITH THE USE OF THE INFORMATION CONTAINED HEREIN OR OTHERWISE, AND ALL SUCH RISKS ARE ASSUMED BY THE USER. WE FURTHER EXPRESSLY DISCLAIM ALL WARRANTIES OF MERCHANTABILITY AND FITNESS FOR A PARTICULAR PURPOSE.-V2/08/2012