



Catalog Number:	MO47010	Host:	Mouse
Product Type:	Mouse Monoclonal IgG	Species Reactivity:	Human
Immunogen Sequence:	Recombinant Human MLH1	Format:	Liquid with PBS buffer, pH 7.4 with 0.02% Sodium Azide

Applications: Immunohistochemistry: 1:1,000-3,000

Dilutions listed as a recommendation. Optimal dilution should be determined by investigator.

Storage: The product can be stored undiluted for several weeks at 4°C. Dilute only immediately before use. Aliquot and store at -20°C long term. Avoid freeze thaw-cycles.

Application Notes

Description/Data:

MutL Homolog 1 or MLH1, is a protein involved in the mismatch-repair pathway. MLH1 Antibody is ready to be used for detection of MLH1. This protein has been commonly associated with hereditary non-polyposis colorectal cancer thus is a useful marker for the disease. MLH1 is optimized when paired in an IHC panel with MSH6, MSH2, and PMS2.

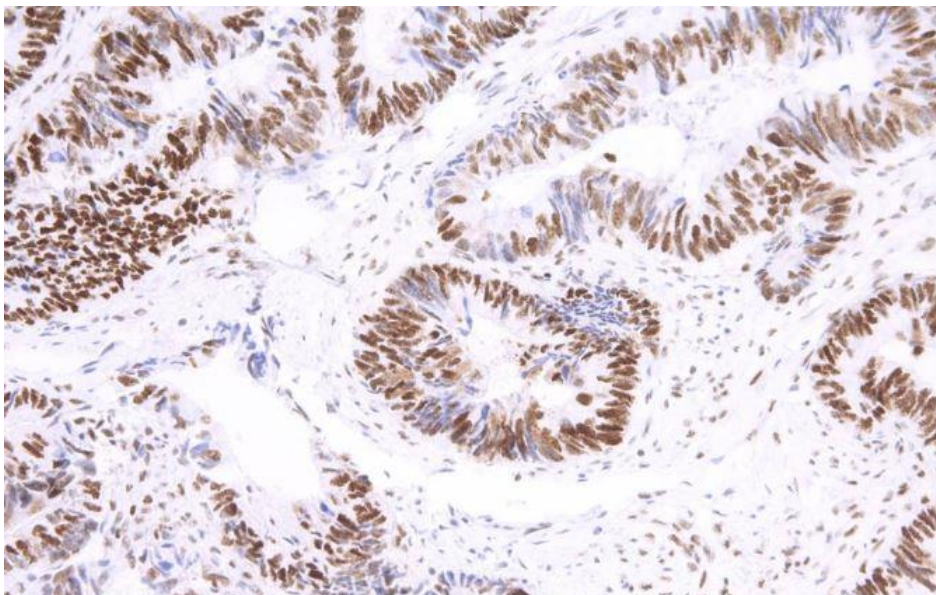


Image: Immunohistochemistry staining of MO47010 on human colon tissue.

FOR RESEARCH USE ONLY

NEUROMICS' REAGENTS ARE FOR IN VITRO AND CERTAIN NON-HUMAN IN VIVO EXPERIMENTAL USE ONLY AND NOT INTENDED FOR USE IN ANY HUMAN CLINICAL INVESTIGATION, DIAGNOSIS, PROGNOSIS, OR TREATMENT. THE ABOVE ANALYSES ARE MERELY TYPICAL GUIDES. THEY ARE NOT TO BE CONSTRUED AS BEING SPECIFICATIONS. ALL OF THE ABOVE INFORMATION IS, TO THE BEST OF OUR KNOWLEDGE, TRUE AND ACCURATE. HOWEVER, SINCE THE CONDITIONS OF USE ARE BEYOND OUR CONTROL, ALL RECOMMENDATIONS OR SUGGESTIONS ARE MADE WITHOUT GUARANTEE, EXPRESS OR IMPLIED, ON OUR PART. WE DISCLAIM ALL LIABILITY IN CONNECTION WITH THE USE OF THE INFORMATION CONTAINED HEREIN OR OTHERWISE, AND ALL SUCH RISKS ARE ASSUMED BY THE USER. WE FURTHER EXPRESSLY DISCLAIM ALL WARRANTIES OF MERCHANTABILITY AND FITNESS FOR A PARTICULAR PURPOSE.-V2/08/2012