



**Catalog Number:** RA21019

**Host:** Rabbit

**Product Type:** Rabbit Polyclonal IgG

**Species Reactivity:** Human, Mouse, and Rat

**Immunogen Sequence:** Synthetic peptide

**Format:** Lyophilized powder.

**Applications:**  
 Immunohistochemistry: 5-10 ug/ml  
 Immunofluorescence: 5-15 ug/ml  
 Western Blot: 1 ug/ml

Dilutions listed as a recommendation. Optimal dilution should be determined by investigator.

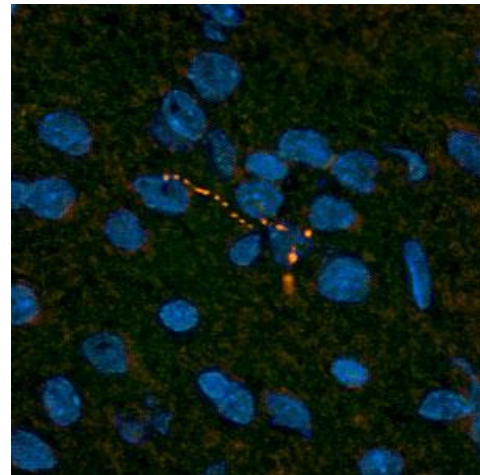
**Storage:** The product can be stored as supplied for up to 12 months at 2°C-4°C. After reconstitution, aliquot and store at -20°C for higher stability or at 4°C with an appropriate antibacterial agent. Avoid freeze thaw-cycles.

### Application Notes

**Description/Data:**

Leptin is a protein that is secreted by white adipocytes, and which plays a major role in the regulation of body weight. This protein, which acts through the leptin receptor, functions as part of a signaling pathway that can inhibit food intake and/or regulate energy expenditure to maintain constancy of the adipose mass. This protein also has several endocrine functions, and is involved in the regulation of immune and inflammatory responses, hematopoiesis, angiogenesis and wound healing. Mutations in this gene and/or its regulatory regions cause severe obesity, and morbid obesity with hypogonadism. This gene has also been linked to type 2 diabetes mellitus development. This gene encodes a protein that is secreted by white adipocytes, and which plays a major role in the regulation of body weight. This protein, which acts through the leptin receptor, functions as part of a signaling pathway that can inhibit food intake and/or regulate energy expenditure to maintain constancy of the adipose mass. This protein also has several endocrine functions, and is involved in the regulation of immune and inflammatory responses, hematopoiesis, angiogenesis and wound healing. Mutations in this gene and/or its regulatory regions cause severe obesity, and morbid obesity with hypogonadism.

*Images: Immunohistochemical detection of Leptin in mouse hypothalamus. Mouse brain was fixed with 4% formaldehyde and cut into 10 µm thick cryostat sections. Tissue was incubated with rabbit polyclonal antibody to Leptin at 15 µg/mL overnight at 4°C followed by incubation with Donkey anti-rabbit Rhodamine Red conjugated secondary antibodies at 1:200. Cell nuclei were counterstained with DAPI (blue).*



**FOR RESEARCH USE ONLY**

NEUROMICS' REAGENTS ARE FOR IN VITRO AND CERTAIN NON-HUMAN IN VIVO EXPERIMENTAL USE ONLY AND NOT INTENDED FOR USE IN ANY HUMAN CLINICAL INVESTIGATION, DIAGNOSIS, PROGNOSIS, OR TREATMENT. THE ABOVE ANALYSES ARE MERELY TYPICAL GUIDES. THEY ARE NOT TO BE CONSTRUED AS BEING SPECIFICATIONS. ALL OF THE ABOVE INFORMATION IS, TO THE BEST OF OUR KNOWLEDGE, TRUE AND ACCURATE. HOWEVER, SINCE THE CONDITIONS OF USE ARE BEYOND OUR CONTROL, ALL RECOMMENDATIONS OR SUGGESTIONS ARE MADE WITHOUT GUARANTEE, EXPRESS OR IMPLIED, ON OUR PART. WE DISCLAIM ALL LIABILITY IN CONNECTION WITH THE USE OF THE INFORMATION CONTAINED HEREIN OR OTHERWISE, AND ALL SUCH RSKS ARE ASSUMED BY THE USER. WE FURTHER EXPRESSLY DISCLAIM ALL WARRANTIES OF MERCHANTABILITY AND FITNESS FOR A PARTICULAR PURPOSE.-V2/08/2012