

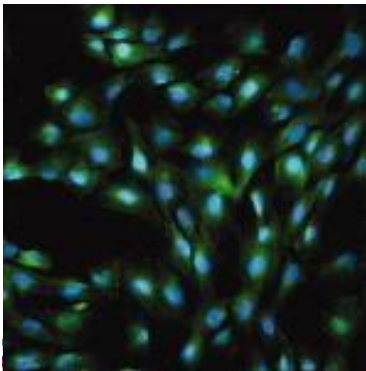


Catalog Number:	RA25102	Host:	Rabbit
Product Type:	Rabbit Polyclonal IgG	Species Reactivity:	Human
Immunogen Sequence:	Purified antisera of the Von Willebrand Factor (factor VIII R:ag) related antigen in plasma.	Format:	IgG purified with 10mM PBS (pH 7.4) buffer and 15mM Sodium Azide
Applications:	Immunohistochemistry: 1:1,000 Immunofluorescent: 1:1,000 Immunohistochemistry: 1:1,000		

Dilutions listed as a recommendation. Optimal dilution should be determined by investigator.

Storage: Antibody can also be aliquotted and stored frozen at -20° C long term. The antibody can be stored at 2° - 8° C for the short term without detectable loss of activity. Avoid repeated freeze-thaw cycles.

Application Notes

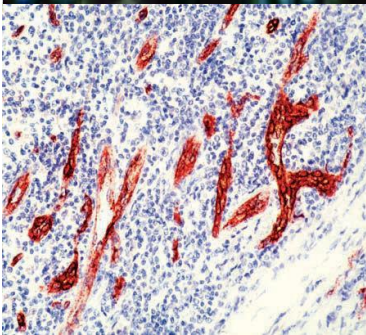


Description/Data:

Human Von Willebrand Factor(factor VIII R:Ag) is a 270 kDa multimeric plasma glycoprotein. It mediates platelet adhesion to injured vessel walls and serves as a carrier and stabilizer for coagulation factor VIII. The von Willebrand factor has functional binding domains to platelet glycoprotein Ib, glycoprotein IIb/IIIa, collagen and heparin. The factor is synthesized by endothelial cells and is also present in platelets and megakaryocytes.

ThisRRA antibody specifically reacts with the cytoplasm of human endothelial cells from normal and neoplastic blood and from lymphatic vessels. It also reacts with human endocardium, platelets and megakaryocytes. It may be used for immunohistological studies of the vascular structures in frozen tissue preparations and enzymatically pre-digested, formalin, methacarn, Bouin's or ethanol-fixed and paraffin-embedded tissue sections.

*Images: **Top:** Immunofluorescence analysis using Von Willebrand Factor antibody (RA25102). **Bottom:** Formalin fixed paraffin embedded human tonsil stained with RA25102 antibody.*



FOR RESEARCH USE ONLY

NEUROMICS' REAGENTS ARE FOR IN VITRO AND CERTAIN NON-HUMAN IN VIVO EXPERIMENTAL USE ONLY AND NOT INTENDED FOR USE IN ANY HUMAN CLINICAL INVESTIGATION, DIAGNOSIS, PROGNOSIS, OR TREATMENT. THE ABOVE ANALYSES ARE MERELY TYPICAL GUIDES. THEY ARE NOT TO BE CONSTRUED AS BEING SPECIFICATIONS. ALL OF THE ABOVE INFORMATION IS, TO THE BEST OF OUR KNOWLEDGE, TRUE AND ACCURATE. HOWEVER, SINCE THE CONDITIONS OF USE ARE BEYOND OUR CONTROL, ALL RECOMMENDATIONS OR SUGGESTIONS ARE MADE WITHOUT GUARANTEE, EXPRESS OR IMPLIED, ON OUR PART. WE DISCLAIM ALL LIABILITY IN CONNECTION WITH THE USE OF THE INFORMATION CONTAINED HEREIN OR OTHERWISE, AND ALL SUCH RSKS ARE ASSUMED BY THE USER. WE FURTHER EXPRESSLY DISCLAIM ALL WARRANTIES OF MERCHANTABILITY AND FITNESS FOR A PARTICULAR PURPOSE.-V2/08/2012