



Catalog Number:	RA22138	Host:	Rabbit
Product Type:	Rabbit Polyclonal	Species Reactivity:	Human, Rat, Mouse, Cow, and Pig
Immunogen Sequence:	C-terminal peptide of rat NF-L protein, GEEEDTKESEEEEEKKEESAGEEQAAKKDD with an N-terminal Cys for coupling to KLH	Format:	Supplied as an aliquot of serum plus 5mM NaN ₃
Applications:	Immunofluorescence: 1:5,000 Immunocytochemistry: 1:5,000 Western Blot: 1:10,000-15,000		

Dilutions listed as a recommendation. Optimal dilution should be determined by investigator.

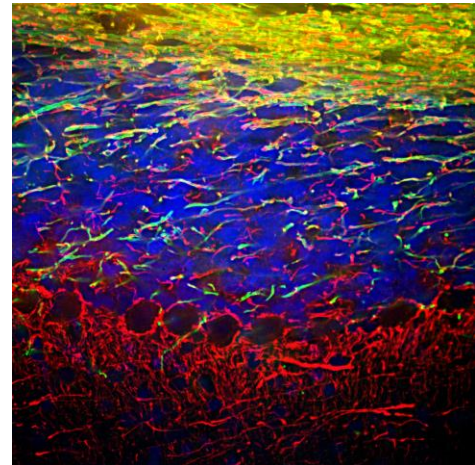
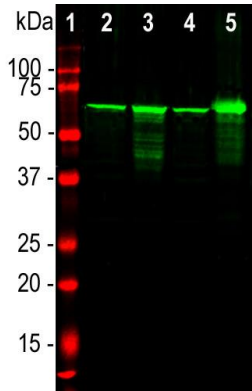
Storage: Antibody can also be aliquotted and stored frozen at -20° C in a manual defrost freezer for six months without detectable loss of activity. The antibody can be stored at 2° - 8° C for 1 month without detectable loss of activity. Avoid repeated freeze-thaw cycles.

Application Notes

Description/Data:

Neurofilaments are the 10nm or intermediate filament proteins found specifically in neurons, and are composed predominantly of three major proteins called NF-L, NF-M and NF-H, though other filament proteins may be included also. The major function of neurofilaments is likely to control the diameter of large axons. NF-L is the neurofilament light or low molecular weight polypeptide and runs on SDS-PAGE gels at 68-70kDa with some variability across species. Antibodies to NF-L are useful for identifying neuronal cells and their processes in cell culture and sectioned material. NF-L antibody can also be useful for the visualization of neurofilament rich accumulations seen in many neurological diseases, such as Lou Gehrig's disease (ALS), giant axon neuropathy, Charcot-Marie Tooth disease and others. Much interest has recently been focused

on the detection of NF-L released from neurons into blood and CSF as a surrogate marker of primarily axonal loss in a variety of types of CNS injury and degeneration.



*Images: **Immunofluorescent:** Immunofluorescent analysis of mouse cerebellum section stained with rabbit pAb to NF-L dilution 1:5,000 in red, and costained with chicken pAb to MBP dilution 1:5,000, in green. **Western Blot:** Western blot analysis of different tissue lysates using rabbit pAb to NF-L, dilution 1:20,000, in green. [1] protein standard (red), [2] rat brain, [3] rat spinal cord, [4] mouse brain, [5] mouse spinal cord. The strong band at 68kDa corresponds to the NF-L protein.*

FOR RESEARCH USE ONLY

NEUROMICS' REAGENTS ARE FOR IN VITRO AND CERTAIN NON-HUMAN IN VIVO EXPERIMENTAL USE ONLY AND NOT INTENDED FOR USE IN ANY HUMAN CLINICAL INVESTIGATION, DIAGNOSIS, PROGNOSIS, OR TREATMENT. THE ABOVE ANALYSES ARE MERELY TYPICAL GUIDES. THEY ARE NOT TO BE CONSTRUED AS BEING SPECIFICATIONS. ALL OF THE ABOVE INFORMATION IS, TO THE BEST OF OUR KNOWLEDGE, TRUE AND ACCURATE. HOWEVER, SINCE THE CONDITIONS OF USE ARE BEYOND OUR CONTROL, ALL RECOMMENDATIONS OR SUGGESTIONS ARE MADE WITHOUT GUARANTEE, EXPRESS OR IMPLIED, ON OUR PART. WE DISCLAIM ALL LIABILITY IN CONNECTION WITH THE USE OF THE INFORMATION CONTAINED HEREIN OR OTHERWISE, AND ALL SUCH RISKS ARE ASSUMED BY THE USER. WE FURTHER EXPRESSLY DISCLAIM ALL WARRANTIES OF MERCHANTABILITY AND FITNESS FOR A PARTICULAR PURPOSE.-V2/08/2012