



<b>Catalog Number:</b>	MO22192	<b>Host:</b>	Mouse
<b>Product Type:</b>	Mouse Monoclonal IgG	<b>Species Reactivity:</b>	Not Applicable
<b>Immunogen Sequence:</b>	Full length recombinant mCherry protein	<b>Format:</b>	Affinity purified at 1mg/mL in PBS, 50% glycerol, 5mM NaN3
<b>Applications:</b>	Immunohistochemistry: 1:1,500 Immunofluorescent: 1:1,500 Immunocytochemistry: 1:1,500 Western Blot: 1:2,000		

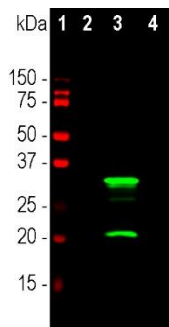
Dilutions listed as a recommendation. Optimal dilution should be determined by investigator.

**Storage:** Antibody can also be aliquotted and stored frozen at -20° C in a manual defrost freezer for six months without detectable loss of activity. The antibody can be stored at 2° - 8° C for 1 month without detectable loss of activity. Avoid repeated freeze-thaw cycles.

### Application Notes

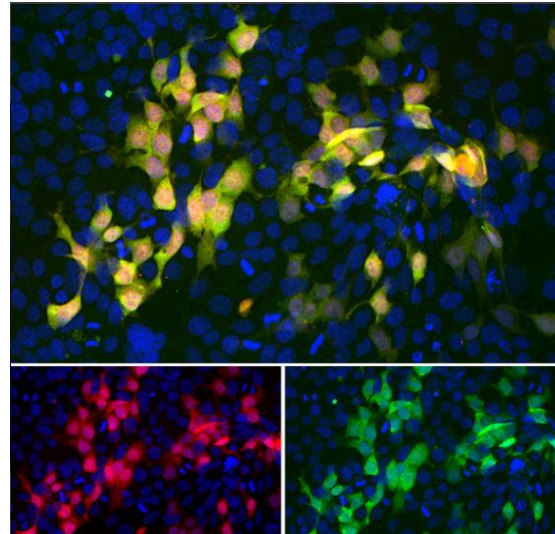
#### Description/Data:

The mCherry protein is derived from a natural product, DsRed, originally isolated as a red fluorescent protein from the coral of the genus *Discosoma*. As with other natural fluorescent proteins of Cnidarians (jelly fish, sea anemones and corals), the natural form of the protein forms stable tetramers in vivo. The protein is widely used as a fluorescent tracer in transfection, transgenic, photobleaching and FRET type experiments. The prototype for these fluorescent proteins is Green Fluorescent Protein (GFP), which is a ~27kDa protein isolated originally from the jellyfish *Aequoria victoria*. The mCherry protein is similar in size and general structural properties to GFP, but, obviously, produces a red rather than a green fluorochrome.



**Images: Immunofluorescence:** Immunofluorescent analysis of HEK293 cells stably transduced with a lentiviral vector expressing an mCherry-HA construct (red) and stained with mouse mAb to mCherry, dilution 1:500 in green.

**Western Blot:** Western blot analysis of various HEK293 cell lysates using mouse mAb to mCherry, dilution 1:5,000, in green. [1] protein standard, [2] untransfected HEK293 lysate, [3] lysate of HEK293 cells transfected with mCherry-HA construct, and [4] lysate of HEK293 cells transfected with an acGFP construct.



**FOR RESEARCH USE ONLY**

NEUROMICS' REAGENTS ARE FOR IN VITRO AND CERTAIN NON-HUMAN IN VIVO EXPERIMENTAL USE ONLY AND NOT INTENDED FOR USE IN ANY HUMAN CLINICAL INVESTIGATION, DIAGNOSIS, PROGNOSIS, OR TREATMENT. THE ABOVE ANALYSES ARE MERELY TYPICAL GUIDES. THEY ARE NOT TO BE CONSTRUED AS BEING SPECIFICATIONS. ALL OF THE ABOVE INFORMATION IS, TO THE BEST OF OUR KNOWLEDGE, TRUE AND ACCURATE. HOWEVER, SINCE THE CONDITIONS OF USE ARE BEYOND OUR CONTROL, ALL RECOMMENDATIONS OR SUGGESTIONS ARE MADE WITHOUT GUARANTEE, EXPRESS OR IMPLIED, ON OUR PART. WE DISCLAIM ALL LIABILITY IN CONNECTION WITH THE USE OF THE INFORMATION CONTAINED HEREIN OR OTHERWISE, AND ALL SUCH RISKS ARE ASSUMED BY THE USER. WE FURTHER EXPRESSLY DISCLAIM ALL WARRANTIES OF MERCHANTABILITY AND FITNESS FOR A PARTICULAR PURPOSE.-V2/08/2012