



| | | | |
|----------------------------|--|----------------------------|---|
| Catalog Number: | MO22199 | Host: | Mouse |
| Product Type: | Mouse monoclonal IgG | Species Reactivity: | Human, rat, mouse, pig and cow |
| Immunogen Sequence: | C-terminal peptide of human β -synuclein EPEGESYEDPPQEEYQEYEPEA coupled to KLH | Format: | Purified antibody at 1mg/mL in 50% PBS, 50% glycerol plus 5mM NaN3 |
| Applications: | Immunofluorescent: 1:1,000 Immunocytochemistry: 1:1,000 Western Blot: 1:1,000 | | |

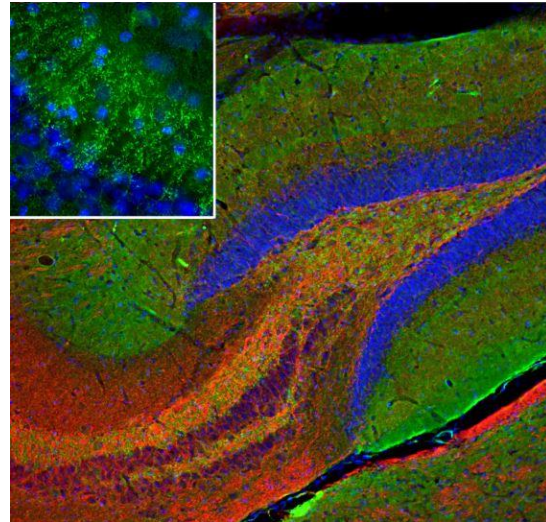
Dilutions listed as a recommendation. Optimal dilution should be determined by investigator.

Storage: Antibody can also be aliquotted and stored frozen at -20° C in a manual defrost freezer for six months without detectable loss of activity. The antibody is stable at 2° - 8° C for 1 year. Avoid repeated freeze-thaw cycles.

Application Notes

Description/Data:

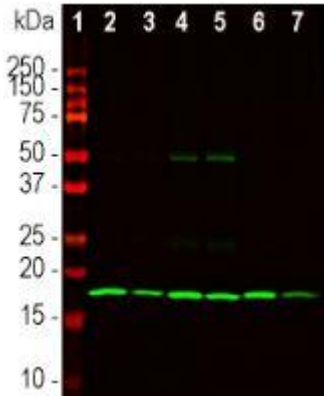
β -synuclein is a member of the synuclein protein family, the other two members being α and γ -synuclein, each protein being coded for by a distinct but related gene. α -synuclein was originally isolated as a major synaptic vesicle associated protein from the electric organ of the fish *Torpedo*, and direct homologues of α -synuclein are found in all vertebrates. Later work connected α -synuclein expression with several human brain pathologies, so that it is a major component of the Lewy bodies of Parkinson's disease. β -synuclein was isolated as a component of normal and diseased human brain as a protein clearly related to but distinct from α -synuclein. The human β -synuclein molecule is 134 amino acids in size compared to 140 amino acids for α -synuclein, and the N-terminal halves of the two molecules are virtually identical while the C-terminal regions is more variable.



FOR RESEARCH USE ONLY

NEUROMICS' REAGENTS ARE FOR IN VITRO AND CERTAIN NON-HUMAN IN VIVO EXPERIMENTAL USE ONLY AND NOT INTENDED FOR USE IN ANY HUMAN CLINICAL INVESTIGATION, DIAGNOSIS, PROGNOSIS, OR TREATMENT. THE ABOVE ANALYSES ARE MERELY TYPICAL GUIDES. THEY ARE NOT TO BE CONSTRUED AS BEING SPECIFICATIONS. ALL OF THE ABOVE INFORMATION IS, TO THE BEST OF OUR KNOWLEDGE, TRUE AND ACCURATE. HOWEVER, SINCE THE CONDITIONS OF USE ARE BEYOND OUR CONTROL, ALL RECOMMENDATIONS OR SUGGESTIONS ARE MADE WITHOUT GUARANTEE, EXPRESS OR IMPLIED, ON OUR PART. WE DISCLAIM ALL LIABILITY IN CONNECTION WITH THE USE OF THE INFORMATION CONTAINED HEREIN OR OTHERWISE, AND ALL SUCH RSKS ARE ASSUMED BY THE USER. WE FURTHER EXPRESSLY DISCLAIM ALL WARRANTIES OF MERCHANTABILITY AND FITNESS FOR A PARTICULAR PURPOSE.-V2/08/2012

Images: Immunofluorescence: Immunofluorescent analysis of mouse hippocampus section stained with mouse mAb to β -synuclein, MO22190, dilution 1:500 in green, and costained with rabbit peptide pAb to neurofilament NF-L, dilution 1:5,000, in red. The blue is Hoechst staining of nuclear DNA. The β -synuclein antibody detects protein concentrated in synaptic regions, while the NF-L antibody labels dendrites and axons of neuronal cells. **Western Blot:** Western blot analysis of tissue lysates using mAb to α -synuclein, dilution 1:1,000 in green. Lane [1] protein standard in red, [2] whole rat brain lysate, [3] rat spinal cord lysate. The strong band at about 15kDa corresponds to α -synuclein protein.



FOR RESEARCH USE ONLY

NEUROMICS' REAGENTS ARE FOR IN VITRO AND CERTAIN NON-HUMAN IN VIVO EXPERIMENTAL USE ONLY AND NOT INTENDED FOR USE IN ANY HUMAN CLINICAL INVESTIGATION, DIAGNOSIS, PROGNOSIS, OR TREATMENT. THE ABOVE ANALYSES ARE MERELY TYPICAL GUIDES. THEY ARE NOT TO BE CONSTRUED AS BEING SPECIFICATIONS. ALL OF THE ABOVE INFORMATION IS, TO THE BEST OF OUR KNOWLEDGE, TRUE AND ACCURATE. HOWEVER, SINCE THE CONDITIONS OF USE ARE BEYOND OUR CONTROL, ALL RECOMMENDATIONS OR SUGGESTIONS ARE MADE WITHOUT GUARANTEE, EXPRESS OR IMPLIED, ON OUR PART. WE DISCLAIM ALL LIABILITY IN CONNECTION WITH THE USE OF THE INFORMATION CONTAINED HEREIN OR OTHERWISE, AND ALL SUCH RISKS ARE ASSUMED BY THE USER. WE FURTHER EXPRESSLY DISCLAIM ALL WARRANTIES OF MERCHANTABILITY AND FITNESS FOR A PARTICULAR PURPOSE.-V2/08/2012

www.neuromics.com

Neuromics Antibodies • 5325 West 74th Street, Suite 8 • Edina, MN 55439
 phone 866-350-1500 • fax 612-677-3976 • e-mail: pshuster@neuromics.com