



## pre-pro Enkephalin

## Datasheet

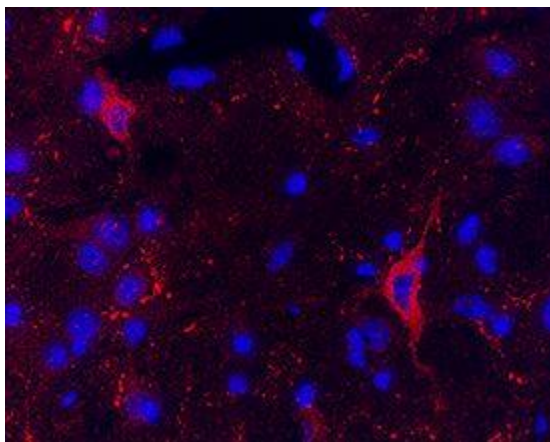
---

<b>Catalog Number:</b>	RA14142	<b>Host:</b>	Rabbit
<b>Product Type:</b>	Rabbit IgG	<b>Species Reactivity:</b>	Mouse, rat
<b>Immunogen Sequence:</b>	CSYSKEVPEMEKRYGGFMRF Conjugated to KLH	<b>Format:</b>	Affinity Purified at concentration of 0.26 mg/ml, 0.05% Sodium Azide
<b>Applications:</b>	Immunohistochemistry 5 ug/ml Dilutions listed only as a recommendation. Optimal dilution should be determined by investigator.		
<b>Storage:</b>	Store frozen. Aliquot as undiluted antibody and immediately place at -20°C. Liquid may have become trapped in top of vial during shipping. Centrifugation of vial is recommended before opening. Stable for at least 6 months at -20°C. Repeated freeze/thaw cycles compromise the integrity of the antiserum.		

---

### Application Notes

Met-enkephalin (tyr-gly-gly-phe-met) and leu-enkephalin (tyr-gly-gly-phe-leu) are pentapeptides which compete with and mimic the effects of opiate drugs. Although interest in enkephalins stems largely from their possible role in the brain, the richest source of these peptides is the adrenal gland. The amino acid sequence shows that the precursor is 267 amino acids long and contains 6 interspersed Met-enkephalin sequences and 1 Leu-enkephalin sequence. The precursor does not contain the sequences of dynorphin, alpha-neo-endorphin or beta-endorphin. (Because of structural similarities it had been postulated that beta-endorphin is precursor of Met-enkephalin, and that dynorphin or alpha-neo-endorphin is precursor of Leu-enkephalin.) It is involved in the modulation of nociceptive pain. ppENK may be capable of enhancing immune function in cancer or AIDS patients.



*Image: Immunohistochemistry analysis of mouse brain striatum transfected with ppENK (RA14142). Neurons and synaptic vesicles are stained in the image.*

### FOR RESEARCH USE ONLY

NEUROMICS REAGENTS ARE FOR IN VITRO AND CERTAIN NON-HUMAN IN VIVO EXPERIMENTAL USE ONLY AND NOT INTENDED FOR USE IN ANY HUMAN CLINICAL INVESTIGATION, DIAGNOSIS, PROGNOSIS, OR TREATMENT. THE ABOVE ANALYSES ARE MERELY TYPICAL GUIDES. THEY ARE NOT TO BE CONSTRUED AS BEING SPECIFICATIONS. ALL OF THE ABOVE INFORMATION IS, TO THE BEST OF OUR KNOWLEDGE, TRUE AND ACCURATE. HOWEVER, SINCE THE CONDITIONS OF USE ARE BEYOND OUR CONTROL, ALL RECOMMENDATIONS OR SUGGESTIONS ARE MADE WITHOUT GUARANTEE, EXPRESS OR IMPLIED, ON OUR PART. WE DISCLAIM ALL LIABILITY IN CONNECTION WITH THE USE OF THE INFORMATION CONTAINED HEREIN OR OTHERWISE, AND ALL SUCH RISKS ARE ASSUMED BY THE USER. WE FURTHER EXPRESSLY DISCLAIM ALL WARRANTIES OF MERCHANTABILITY AND FITNESS FOR A PARTICULAR PURPOSE.

[www.neuromics.com](http://www.neuromics.com)

Neuromics Antibodies • 5325 West 74<sup>th</sup> Street, Suite 8 • Edina, MN 55439  
phone 866-350-1500 • fax 612-677-3976 • e-mail [pshuster@neuromics.com](mailto:pshuster@neuromics.com)