

Data Sheet

pENTRY-IBA51

Cat. No.: 5-4091-001

Version: 2.2

Lot No.: 4091-

Revision Date: 02.03.2020

Description	StarGate® Entry Vector to insert the PCR product of a certain gene of interest to generate a Donor Vector.
Resistance	Kanamycin
Form	5 µg, dissolved in 20 µl TE buffer, pH 8,0: 10 mM Tris-HCl, 1 mM EDTA
Concentration	250 ng/µl
Stability	12 months after shipping
Storage	recommended: 2-8 °C for frequent usage, -20 °C for long-term storage
Shipping	room temperature
Hazards	Product is not classified as hazardous according to (EC) No 1272/2008 [CLP]. A Material Safety Data Sheet is provided.

Note: The sequences have been compiled from information in the sequence database, published literature, and other sources, together with partial sequences obtained by IBA, however, the vectors have not been completely sequenced.



Go digital and help the environment. Please download all up-to-date manuals, protocols and other material from <http://www.iba-lifesciences.com>.

For research use only

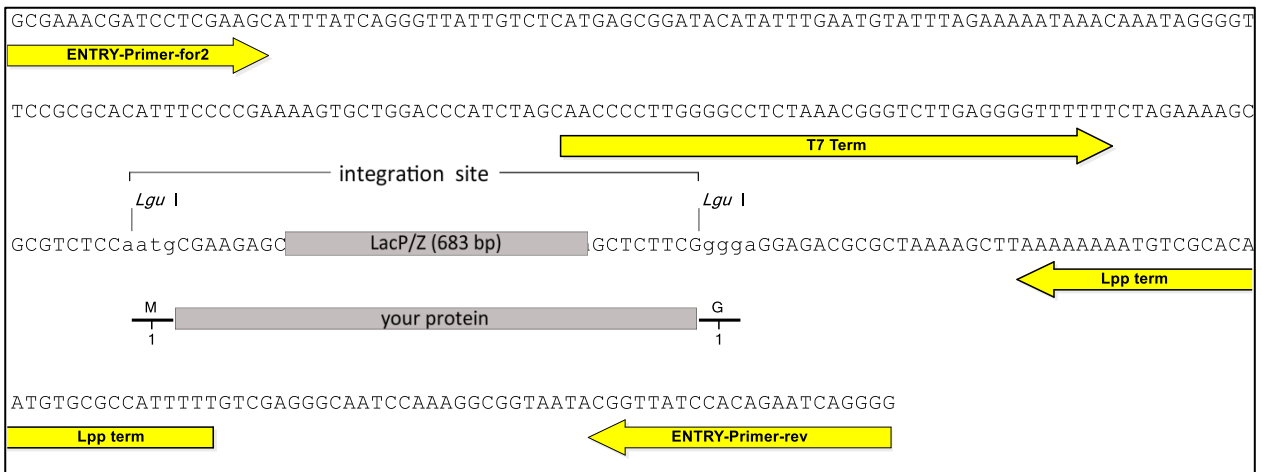
Important licensing information

This product is based on StarGate technology covered by intellectual property (IP) rights and on completion of the sale IBA grants respective Limited Use Label Licenses to purchaser. IP rights and Limited Use Label Licenses for said technology are further described and identified at <http://www.iba-lifesciences.com/patents.html> or upon inquiry at info@iba-lifesciences.com or at IBA GmbH, Rudolf-Wissell-Str. 28, 37079 Goettingen, Germany. By use of this product the purchaser accepts the terms and conditions of all applicable Limited Use Label Licenses.

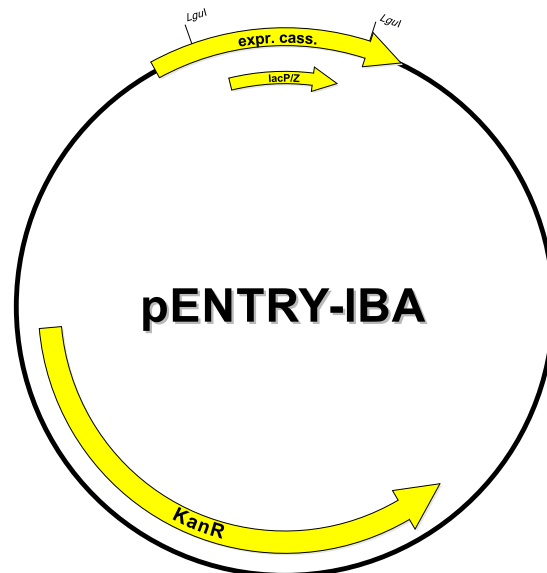
Trademark information

The owners of trademarks marked by “®” or “TM” are identified at <http://www.iba-lifesciences.com/patents.html>. Registered names, trademarks, etc. used in this document, even when not specifically marked as such, are not to be considered unprotected by law.

Cloning site of pENTRY-IBA51



LacP/Z cassette = contains LacZ alpha fragment under control of a separate promoter, which allows alpha complementation of *LacZ* mutations such as *LacZΔM15* as in *E. coli* DH5α or TOP10.
 your protein = after StarGate cloning using *LguI* your gene of interest will be located here



Features	from bp	to bp	Sequencing primer
Kanamycin resistance gene	1564	770	ENTRY-Primer-for2 (Cat. No. 5-0000-153)
forward primer binding site	1565	1583	5' - GCGAAACGATCCTCGAAGC -3'
T7 terminator	1695	1734	
LacP/Z	1983	2384	ENTRY-Primer-rev (Cat. No. 5-0000-152)
Lpp terminator	2476	2507	
reverse primer binding site	2535	2556	5' - CCCCTGATTCTGTGGATAACCG -3'
total vector length		2556	